



# CDKAL1 Monoclonal Antibody

<b>Catalog No</b>	BYmab-03755
<b>Isotype</b>	IgG
<b>Reactivity</b>	Human;Rat
<b>Applications</b>	WB
<b>Gene Name</b>	CDKAL1
<b>Protein Name</b>	Threonylcarbamoyladenosine tRNA methylthiotransferase
<b>Immunogen</b>	The antiserum was produced against synthesized peptide derived from human CDKAL. AA range:10-59
<b>Specificity</b>	CDKAL1 Monoclonal Antibody detects endogenous levels of CDKAL1 protein.
<b>Formulation</b>	Liquid in PBS containing 50% glycerol, 0.5% BSA and 0.02% sodium azide.
<b>Source</b>	Monoclonal, Mouse,IgG
<b>Purification</b>	The antibody was affinity-purified from mouse antiserum by affinity-chromatography using epitope-specific immunogen.
<b>Dilution</b>	WB 1:500-2000
<b>Concentration</b>	1 mg/ml
<b>Purity</b>	≥90%
<b>Storage Stability</b>	-20°C/1 year
<b>Synonyms</b>	CDKAL1; Threonylcarbamoyladenosine tRNA methylthiotransferase; CDK5 regulatory subunit-associated protein 1-like 1; tRNA-t(6)A37 methylthiotransferase
<b>Observed Band</b>	65kD
<b>Cell Pathway</b>	Endoplasmic reticulum membrane ; Single-pass membrane protein . Is a tail-anchored protein that exploits the TCR40 pathway for insertion into the endoplasmic reticulum. .
<b>Tissue Specificity</b>	Expressed in pancreatic islets.
<b>Function</b>	cofactor:Binds 2 4Fe-4S clusters. One cluster is coordinated with 3 cysteines and an exchangeable S-adenosyl-L-methionine.,similarity:Belongs to the methylthiotransferase family. CDKAL1 subfamily.,similarity:Contains 1 MTTase N-terminal domain.,similarity:Contains 1 TRAM domain.,
<b>Background</b>	The protein encoded by this gene is a member of the methylthiotransferase family. The function of this gene is not known. Genome-wide association studies have linked single nucleotide polymorphisms in an intron of this gene with

**Nanjing BYabscience technology Co.,Ltd**



susceptibility to type 2 diabetes. [provided by RefSeq, May 2010],

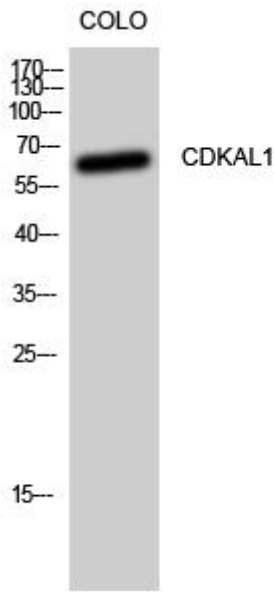
**matters needing attention**

Avoid repeated freezing and thawing!

**Usage suggestions**

This product can be used in immunological reaction related experiments. For more information, please consult technical personnel.

## Products Images



Western Blot analysis of various cells using CDKAL1 Monoclonal Antibody

Nanjing BYabs science technology Co.,Ltd

网址: [www.njbybio.com](http://www.njbybio.com)

官方热线: 025-5229-8998

监督电话: 15950492658