



Ataxin-2L Monoclonal Antibody

Catalog No	BYmab-03734
Isotype	IgG
Reactivity	Human;Rat;Mouse;
Applications	WB
Gene Name	ATXN2L
Protein Name	Ataxin-2-like protein
Immunogen	The antiserum was produced against synthesized peptide derived from human ATXN2L. AA range:571-620
Specificity	Ataxin-2L Monoclonal Antibody detects endogenous levels of Ataxin-2L protein.
Formulation	Liquid in PBS containing 50% glycerol, 0.5% BSA and 0.02% sodium azide.
Source	Monoclonal, Mouse,IgG
Purification	The antibody was affinity-purified from mouse antiserum by affinity-chromatography using epitope-specific immunogen.
Dilution	WB 1:500-2000
Concentration	1 mg/ml
Purity	≥90%
Storage Stability	-20°C/1 year
Synonyms	ATXN2L; A2D; A2LG; A2LP; A2RP; Ataxin-2-like protein; Ataxin-2 domain protein; Ataxin-2-related protein
Observed Band	113kD
Cell Pathway	Membrane ; Peripheral membrane protein . Cytoplasm . Nucleus speckle . Cytoplasmic granule . Predominantly cytoplasmic but is also detected in nuclear speckles (PubMed:23209657). Component of cytoplasmic stress granules (PubMed:23209657). Inhibition of methylation alters nuclear localization (PubMed:25748791). Methylation does not seem to be required for localization to stress granules under stress conditions (PubMed:25748791). .
Tissue Specificity	Expressed at high levels in thymus, lymph node, spleen, fetal kidney and adult testis. Constitutively associated with MPL and EPOR in hematopoietic cells.
Function	PTM:Arg-361 is dimethylated, probably to asymmetric dimethylarginine.,PTM:Thrombopoietin triggers the phosphorylation on tyrosine residues in a way that is dependent on MPL C-terminal domain.,sequence caution:Exon duplication.,similarity:Belongs to the ataxin-2 family.,subunit:Interacts with MPL/TPOR and EPOR and dissociates after ligand stimulation.,tissue specificity:Expressed at high levels in thymus, lymph node,

Nanjing BYabscience technology Co.,Ltd



spleen, fetal kidney and adult testis. Constitutively associated with MPL and EPOR in hematopoietic cells.,

Background

This gene encodes an ataxin type 2 related protein of unknown function. This protein is a member of the spinocerebellar ataxia (SCAs) family, which is associated with a complex group of neurodegenerative disorders. Several alternatively spliced transcripts encoding different isoforms have been found for this gene. [provided by RefSeq, Jul 2008],

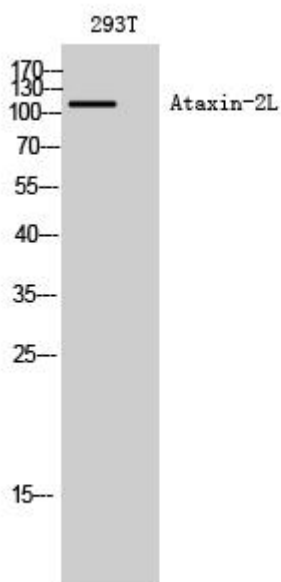
matters needing attention

Avoid repeated freezing and thawing!

Usage suggestions

This product can be used in immunological reaction related experiments. For more information, please consult technical personnel.

Products Images



Western Blot analysis of various cells using Ataxin-2L Monoclonal Antibody