



# Arylsulfatase E Monoclonal Antibody

Catalog No	BYmab-03727
Isotype	IgG
Reactivity	Human;Rat;Mouse;
Applications	WB
Gene Name	ARSE
Protein Name	Arylsulfatase E
Immunogen	Synthesized peptide derived from Arylsulfatase E . at AA range: 120-200
Specificity	Arylsulfatase E Monoclonal Antibody detects endogenous levels of Arylsulfatase E protein.
Formulation	Liquid in PBS containing 50% glycerol, 0.5% BSA and 0.02% sodium azide.
Source	Monoclonal, Mouse,IgG
Purification	The antibody was affinity-purified from mouse antiserum by affinity-chromatography using epitope-specific immunogen.
Dilution	WB 1:500-2000
Concentration	1 mg/ml
Purity	≥90%
Storage Stability	-20°C/1 year
Synonyms	ARSE; Arylsulfatase E; ASE
Observed Band	65kD
Cell Pathway	Golgi apparatus, Golgi stack .
Tissue Specificity	Expressed in the pancreas, liver and kidney.
Function	cofactor: Binds 1 calcium ion per subunit., disease: Defects in ARSE are the cause of chondrodysplasia punctata X-linked recessive type 1 (CDPX1) [MIM:302950]. CDP is a clinically and genetically heterogeneous disorder characterized by punctiform calcification of the bones. CDPX1 is a congenital defect of bone and cartilage development characterized by aberrant bone mineralization, severe underdevelopment of nasal cartilage, and distal phalangeal hypoplasia. This disease can also be induced by inhibition with the drug warfarin., enzyme regulation: Inhibited by millimolar concentrations of warfarin., function: May be essential for the correct composition of cartilage and bone matrix during development. Has no activity toward steroid sulfates., PTM: N-glycosylated., PTM: The conversion to 3-oxoalanine (also known as C-formylglycine, FGly), of a serine or cysteine residue in prokaryotes and of a

Nanjing BYabscience technology Co.,Ltd



cyste

## Background

Arylsulfatase E is a member of the sulfatase family. It is glycosylated postranslationally and localized to the golgi apparatus. Sulfatases are essential for the correct composition of bone and cartilage matrix. X-linked chondrodysplasia punctata, a disease characterized by abnormalities in cartilage and bone development, has been linked to mutations in this gene. Alternative splicing results in multiple transcript variants. A pseudogene related to this gene is located on the Y chromosome. [provided by RefSeq, Sep 2013],

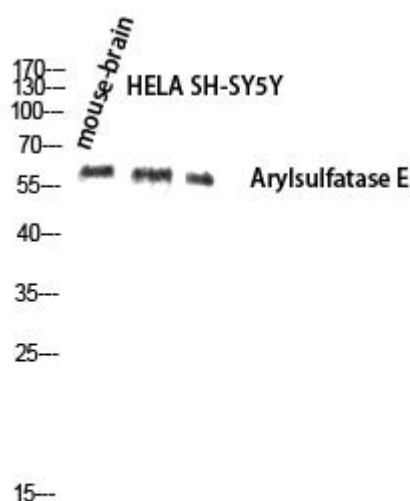
## matters needing attention

Avoid repeated freezing and thawing!

## Usage suggestions

This product can be used in immunological reaction related experiments. For more information, please consult technical personnel.

## Products Images



Western Blot analysis of various cells using Arylsulfatase E Monoclonal Antibody

Nanjing BYabscience technology Co.,Ltd

网址: [www.njbybio.com](http://www.njbybio.com)

官方热线: 025-5229-8998

监督电话: 15950492658