



# AKAP 2 Monoclonal Antibody

Catalog No	BYmab-03691
Isotype	IgG
Reactivity	Human;Rat;Mouse;
Applications	WB
Gene Name	AKAP2
Protein Name	A-kinase anchor protein 2
Immunogen	The antiserum was produced against synthesized peptide derived from human AKAP2. AA range:71-120
Specificity	AKAP 2 Monoclonal Antibody detects endogenous levels of AKAP 2 protein.
Formulation	Liquid in PBS containing 50% glycerol, 0.5% BSA and 0.02% sodium azide.
Source	Monoclonal, Mouse,IgG
Purification	The antibody was affinity-purified from mouse antiserum by affinity-chromatography using epitope-specific immunogen.
Dilution	WB 1:500-2000
Concentration	1 mg/ml
Purity	≥90%
Storage Stability	-20°C/1 year
Synonyms	AKAP2; KIAA0920; PRKA2; A-kinase anchor protein 2; AKAP-2; AKAP-KL; Protein kinase A-anchoring protein 2; PRKA2
Observed Band	96kD
Cell Pathway	
Tissue Specificity	Brain,Epithelium,Hippocampus,Liver,Muscle,Small intestine,Trachea,
Function	caution:It is uncertain whether Met-1 or Met-3 is the initiator.,function:Binds to regulatory subunit (RII) of protein kinase A. May be involved in establishing polarity in signaling systems or in integrating PKA-RII isoforms with downstream effectors to capture, amplify and focus diffuse, trans-cellular signals carried by cAMP.,miscellaneous:Can be differentially expressed as a natural AKAP2-PALM2 chimeric protein.,similarity:Belongs to the paralemmin family.,tissue specificity:Expressed in infantile heart and muscle, and fibroblasts.,
Background	The protein encoded by this gene binds to the regulatory subunit of protein kinase A and is found associated with the actin cytoskeleton. The encoded protein mediates signals carried by cAMP and may be involved in creating polarity in

Nanjing BYabscience technology Co.,Ltd



certain signaling processes. Three transcript variants encoding different isoforms have been found for this gene. [provided by RefSeq, Mar 2011],

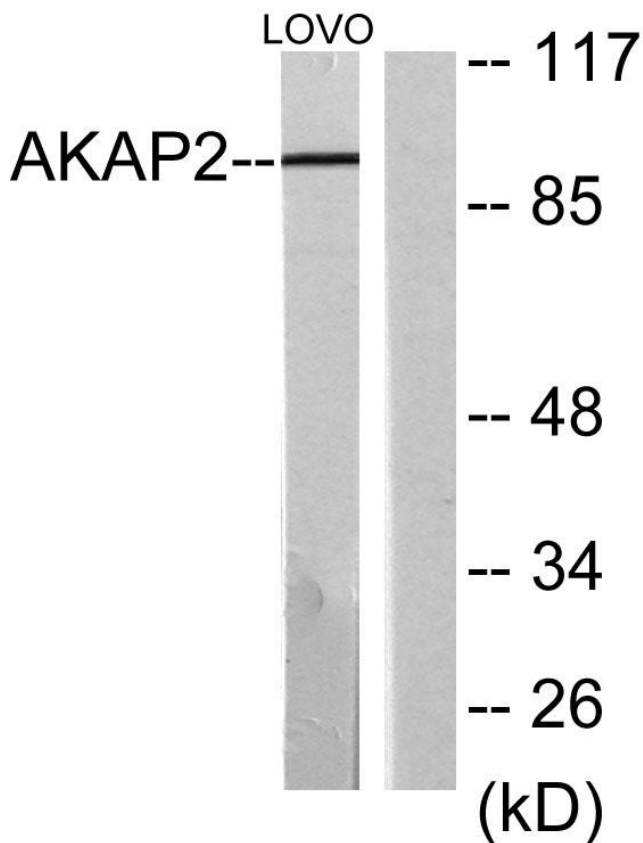
**matters needing attention**

Avoid repeated freezing and thawing!

**Usage suggestions**

This product can be used in immunological reaction related experiments. For more information, please consult technical personnel.

**Products Images**



Western Blot analysis of various cells using AKAP 2 Monoclonal Antibody