



# AKAP 10 Monoclonal Antibody

Catalog No	BYmab-03687
Isotype	IgG
Reactivity	Human;Mouse;Rat
Applications	WB
Gene Name	AKAP10
Protein Name	A-kinase anchor protein 10 mitochondrial
Immunogen	The antiserum was produced against synthesized peptide derived from human AKAP10. AA range:10-59
Specificity	AKAP 10 Monoclonal Antibody detects endogenous levels of AKAP 10 protein.
Formulation	Liquid in PBS containing 50% glycerol, 0.5% BSA and 0.02% sodium azide.
Source	Monoclonal, Mouse,IgG
Purification	The antibody was affinity-purified from mouse antiserum by affinity-chromatography using epitope-specific immunogen.
Dilution	WB 1:500-2000
Concentration	1 mg/ml
Purity	≥90%
Storage Stability	-20°C/1 year
Synonyms	AKAP10; A-kinase anchor protein 10; mitochondrial; AKAP-10; Dual specificity A kinase-anchoring protein 2; D-AKAP-2; Protein kinase A-anchoring protein 10; PRKA10
Observed Band	73kD
Cell Pathway	Mitochondrion . Membrane . Cytoplasm . Predominantly mitochondrial but also membrane associated and cytoplasmic.
Tissue Specificity	Brain,Lung,
Function	domain:RII-alpha binding site, predicted to form an amphipathic helix, could participate in protein-protein interactions with a complementary surface on the R-subunit dimer.;function:Differentially targeted protein that binds to type I and II regulatory subunits of protein kinase A and anchors them to the mitochondria or the plasma membrane. Although the physiological relevance between PKA and AKAPS with mitochondria is not fully understood, one idea is that BAD, a proapoptotic member, is phosphorylated and inactivated by mitochondria-anchored PKA. It cannot be excluded too that it may facilitate PKA as well as G protein signal transduction, by acting as an adapter for assembling

Nanjing BYabscience technology Co.,Ltd



multiprotein complexes. With its RGS domain, it could lead to the interaction to G-alpha proteins, providing a link between the signaling machinery and the downstream kinase.,similarity:Contains 2 RGS domains.,s

## Background

This gene encodes a member of the A-kinase anchor protein family. A-kinase anchor proteins bind to the regulatory subunits of protein kinase A (PKA) and confine the holoenzyme to discrete locations within the cell. The encoded protein is localized to mitochondria and interacts with both the type I and type II regulatory subunits of PKA. Polymorphisms in this gene may be associated with increased risk of arrhythmias and sudden cardiac death. [provided by RefSeq, May 2012],

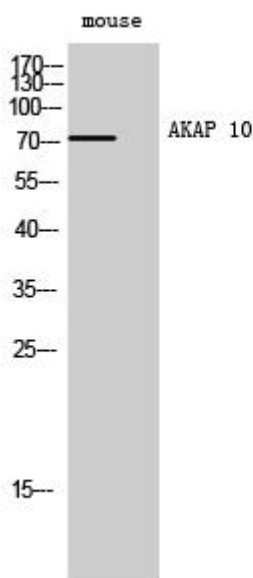
## matters needing attention

Avoid repeated freezing and thawing!

## Usage suggestions

This product can be used in immunological reaction related experiments. For more information, please consult technical personnel.

## Products Images



Western Blot analysis of various cells using AKAP 10 Monoclonal Antibody

Nanjing BYabscience technology Co.,Ltd

网址: [www.njbybio.com](http://www.njbybio.com)

官方热线: 025-5229-8998

监督电话: 15950492658