



# TCTP (phospho-Ser46) mouse mAb

Catalog No	BYmab-03646
Isotype	IgG
Reactivity	Human;Mouse;Rat
Applications	WB
Gene Name	TPT1
Protein Name	TCTP (Ser46)
Immunogen	Synthesized phosho peptide around human TCTP (Ser46)
Specificity	This antibody detects endogenous levels of Human Mouse Rat TCTP (phospho-Ser46)
Formulation	Liquid in PBS containing 50% glycerol, 0.5% BSA and 0.02% sodium azide.
Source	Monoclonal, Mouse,IgG
Purification	The antibody was affinity-purified from mouse antiserum by affinity-chromatography using epitope-specific immunogen.
Dilution	WB 1:500-2000
Concentration	1 mg/ml
Purity	≥90%
Storage Stability	-20°C/1 year
Synonyms	Translationally-controlled tumor protein (TCTP) (Fortilin) (Histamine-releasing factor) (HRF) (p23)
Observed Band	24kD
Cell Pathway	Cytoplasm .
Tissue Specificity	Found in several healthy and tumoral cells including erythrocytes, hepatocytes, macrophages, platelets, keratinocytes, erythroleukemia cells, gliomas, melanomas, hepatoblastomas, and lymphomas. It cannot be detected in kidney and renal cell carcinoma (RCC). Expressed in placenta and prostate.
Function	function:Involved in calcium binding and microtubule stabilization.,similarity:Belongs to the TCTP family.,subunit:Interacts with STEAP3.,tissue specificity:Found in several healthy and tumoral cells including erythrocytes, hepatocytes, macrophages, platelets, keratinocytes, erythroleukemia cells, gliomas, melanomas, hepatoblastomas, and lymphomas. It cannot be detected in kidney and renal cell carcinoma (RCC). Expressed in placenta and prostate.,

Nanjing BYabscience technology Co.,Ltd



## Background

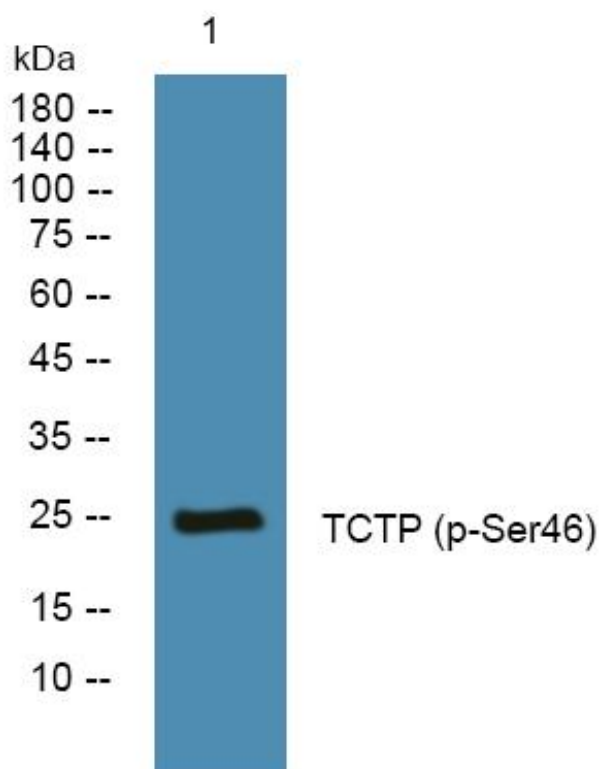
### matters needing attention

Avoid repeated freezing and thawing!

### Usage suggestions

This product can be used in immunological reaction related experiments. For more information, please consult technical personnel.

## Products Images



Western Blot analysis of various cells using TCTP (phospho-Ser46) mouse mAb