



Cortactin (phospho Tyr466) Monoclonal Antibody

Catalog No	BYmab-03584
Isotype	IgG
Reactivity	Human;Mouse;Rat;Monkey
Applications	WB
Gene Name	CTTN
Protein Name	Src substrate cortactin
Immunogen	The antiserum was produced against synthesized peptide derived from mouse Cortactin around the phosphorylation site of Tyr466. AA range:441-490
Specificity	Phospho-Cortactin (Y466) Monoclonal Antibody detects endogenous levels of Cortactin protein only when phosphorylated at Y466.
Formulation	Liquid in PBS containing 50% glycerol, 0.5% BSA and 0.02% sodium azide.
Source	Monoclonal, Mouse,IgG
Purification	The antibody was affinity-purified from mouse antiserum by affinity-chromatography using epitope-specific immunogen.
Dilution	WB 1:500-2000
Concentration	1 mg/ml
Purity	≥90%
Storage Stability	-20°C/1 year
Synonyms	CTTN; EMS1; Src substrate cortactin; Amplaxin; Oncogene EMS1
Observed Band	80kD
Cell Pathway	Cytoplasm, cytoskeleton . Cell projection, lamellipodium . Cell projection, ruffle. Cell projection, dendrite . Cell projection . Cell membrane ; Peripheral membrane protein ; Cytoplasmic side . Cell projection, podosome . Cell junction . Cell junction, focal adhesion . Membrane, clathrin-coated pit . Cell projection, dendritic spine . Cytoplasm, cell cortex . Colocalizes transiently with PTK2/FAK1 at focal adhesions (By similarity). Associated with membrane ruffles and lamellipodia. In the presence of CTTNBP2NL, colocalizes with stress fibers (By similarity). In the presence of CTTNBP2, localizes at the cell cortex (By similarity). In response to neuronal activation by glutamate, redistributes from dendritic spines to the dendritic shaft (By similarity). Colocalizes with DNM2 at the basis
Tissue Specificity	Coronary artery,Epithelium,Mammary gland,Placenta,Platelet,Testis,
Function	function:May contribute to the organization of cell structure. The SH3 motif may function as a binding region to cytoskeleton. Tyrosine phosphorylation in transformed cells may contribute to cellular growth regulation and

Nanjing BYabscience technology Co.,Ltd



transformation.,online information:Cortactin entry,similarity:Contains 1 SH3 domain.,similarity:Contains 7 cortactin repeats.,subcellular location:Associated with membrane ruffles and lamellipodia.,subunit:Interacts with SHANK2 and SHANK3 via its SH2 domain. Also interacts with FGD1 (By similarity). Interacts with PLXDC2.,

Background

cortactin(CTTN) Homo sapiens This gene is overexpressed in breast cancer and squamous cell carcinomas of the head and neck. The encoded protein is localized in the cytoplasm and in areas of the cell-substratum contacts. This gene has two roles: (1) regulating the interactions between components of adherens-type junctions and (2) organizing the cytoskeleton and cell adhesion structures of epithelia and carcinoma cells. During apoptosis, the encoded protein is degraded in a caspase-dependent manner. The aberrant regulation of this gene contributes to tumor cell invasion and metastasis. Three splice variants that encode different isoforms have been identified for this gene. [provided by RefSeq, May 2010],

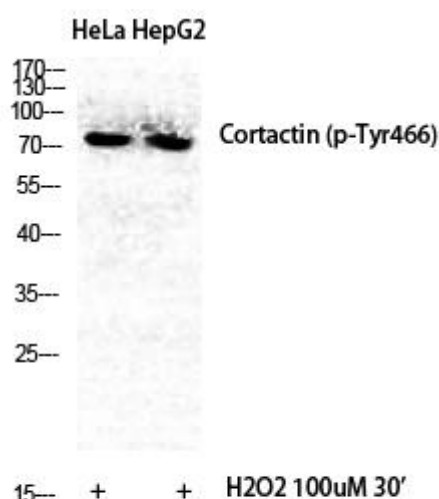
matters needing attention

Avoid repeated freezing and thawing!

Usage suggestions

This product can be used in immunological reaction related experiments. For more information, please consult technical personnel.

Products Images



Western Blot analysis of various cells using Cortactin (phospho Tyr466) Monoclonal Antibody

Nanjing BYabscience technology Co.,Ltd

网址: www.njbybio.com

官方热线: 025-5229-8998

监督电话: 15950492658