



Caveolin-2 (phospho Tyr27) Monoclonal Antibody

Catalog No	BYmab-03539
Isotype	IgG
Reactivity	Human;Rat;Mouse;
Applications	WB
Gene Name	CAV2
Protein Name	Caveolin-2
Immunogen	The antiserum was produced against synthesized peptide derived from human Caveolin 2 around the phosphorylation site of Tyr27. AA range:12-61
Specificity	Phospho-Caveolin-2 (Y27) Monoclonal Antibody detects endogenous levels of Caveolin-2 protein only when phosphorylated at Y27.
Formulation	Liquid in PBS containing 50% glycerol, 0.5% BSA and 0.02% sodium azide.
Source	Monoclonal, Mouse,IgG
Purification	The antibody was affinity-purified from mouse antiserum by affinity-chromatography using epitope-specific immunogen.
Dilution	WB 1:500-2000
Concentration	1 mg/ml
Purity	≥90%
Storage Stability	-20°C/1 year
Synonyms	CAV2; Caveolin-2
Observed Band	26kD
Cell Pathway	Nucleus. Cytoplasm. Golgi apparatus membrane; Peripheral membrane protein. Cell membrane; Peripheral membrane protein. Membrane, caveola; Peripheral membrane protein. Potential hairpin-like structure in the membrane. Membrane protein of caveolae. Tyr-19-phosphorylated form is enriched at sites of cell-cell contact and is translocated to the nucleus in complex with MAPK1 in response to insulin (By similarity). Tyr-27-phosphorylated form is located both in the cytoplasm and plasma membrane. CAV1-mediated Ser-23-phosphorylated form locates to the plasma membrane. Ser-36-phosphorylated form resides in intracellular compartments. .
Tissue Specificity	Expressed in endothelial cells, smooth muscle cells, skeletal myoblasts and fibroblasts.
Function	function:May act as a scaffolding protein within caveolar membranes. Interacts directly with G-protein alpha subunits and can functionally regulate their activity.,function:May act as a scaffolding protein within caveolar membranes.

Nanjing BYabscience technology Co.,Ltd



Interacts directly with G-protein alpha subunits and can functionally regulate their activity. Caveolin-2 may function as an accessory protein in conjunction with caveolin-1.,online information:Caveolin entry,similarity:Belongs to the caveolin family.,subcellular location:Potential hairpin-like structure in the membrane. Membrane protein of caveolae.,subunit:Homodimer. Caveolin-1 and -2 colocalize and form a stable hetero-oligomeric complex.,tissue specificity:Expressed in endothelial cells, smooth muscle cells, skeletal myoblasts and fibroblasts.,

Background

The protein encoded by this gene is a major component of the inner surface of caveolae, small invaginations of the plasma membrane, and is involved in essential cellular functions, including signal transduction, lipid metabolism, cellular growth control and apoptosis. This protein may function as a tumor suppressor. This gene and related family member (CAV1) are located next to each other on chromosome 7, and express colocalizing proteins that form a stable hetero-oligomeric complex. Alternatively spliced transcript variants encoding different isoforms have been identified for this gene. Additional isoforms resulting from the use of alternate in-frame translation initiation codons have also been described, and shown to have preferential localization in the cell (PMID:11238462). [provided by RefSeq, May 2011],

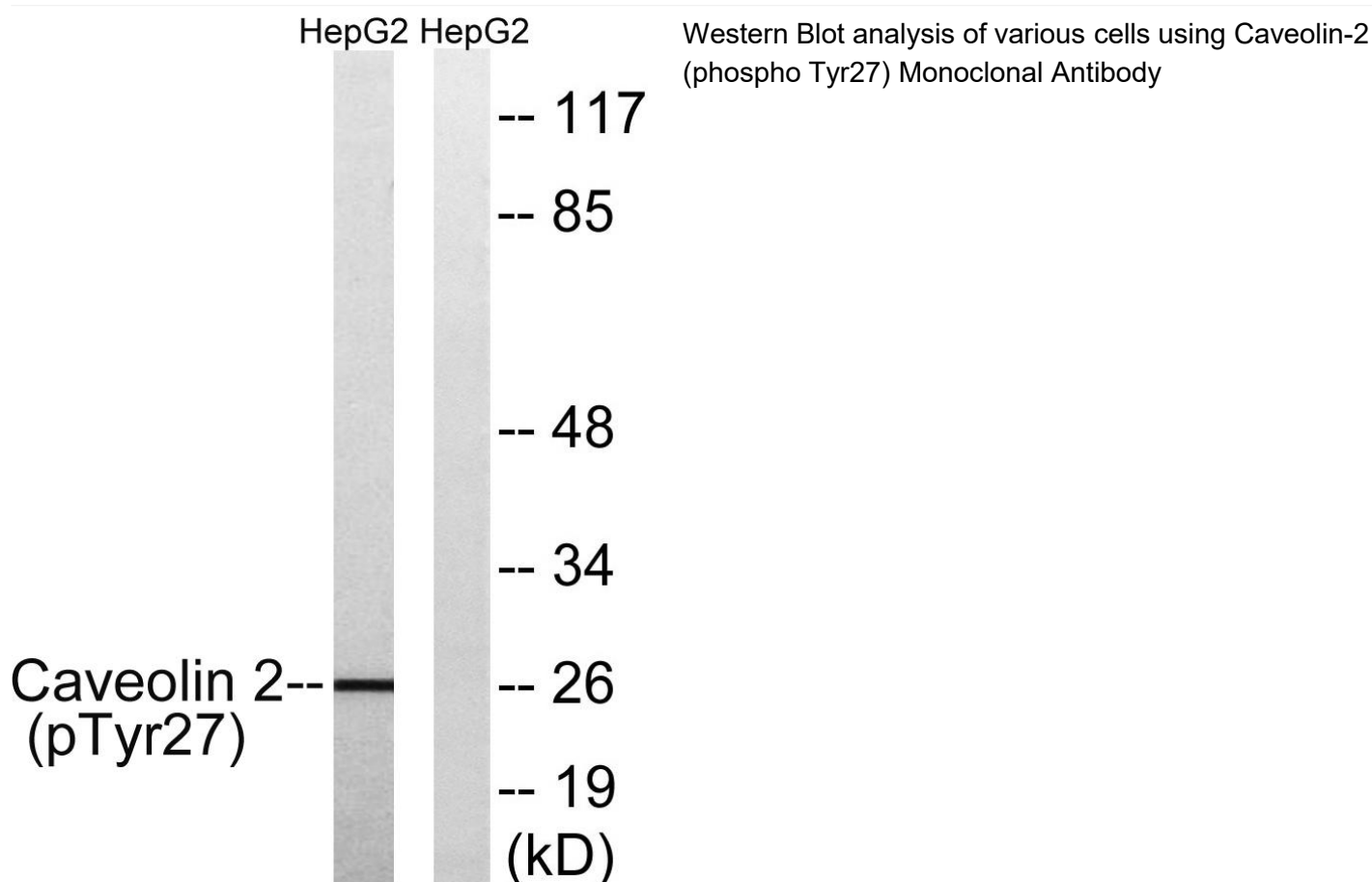
matters needing attention

Avoid repeated freezing and thawing!

Usage suggestions

This product can be used in immunological reaction related experiments. For more information, please consult technical personnel.

Products Images



Nanjing BYabs science technology Co.,Ltd