



OGCP Monoclonal Antibody

| | |
|---------------------------|---|
| Catalog No | BYmab-00712 |
| Isotype | IgG |
| Reactivity | Human;Mouse;Rat |
| Applications | WB |
| Gene Name | SLC25A11 |
| Protein Name | Mitochondrial 2-oxoglutarate/malate carrier protein |
| Immunogen | The antiserum was produced against synthesized peptide derived from human SLC25A11. AA range:132-181 |
| Specificity | OGCP Monoclonal Antibody detects endogenous levels of OGCP protein. |
| Formulation | Liquid in PBS containing 50% glycerol, 0.5% BSA and 0.02% sodium azide. |
| Source | Monoclonal, Mouse,IgG |
| Purification | The antibody was affinity-purified from mouse antiserum by affinity-chromatography using epitope-specific immunogen. |
| Dilution | WB 1:500-2000 |
| Concentration | 1 mg/ml |
| Purity | ≥90% |
| Storage Stability | -20°C/1 year |
| Synonyms | SLC25A11; SLC20A4; Mitochondrial 2-oxoglutarate/malate carrier protein; OGCP; Solute carrier family 25 member 11 |
| Observed Band | 35kD |
| Cell Pathway | Mitochondrion inner membrane ; Multi-pass membrane protein . |
| Tissue Specificity | B-cell lymphoma,Brain,Muscle,Tongue,Uterus, |
| Function | function:Catalyzes the transport of 2-oxoglutarate across the inner mitochondrial membrane in an electroneutral exchange for malate or other dicarboxylic acids, and plays an important role in several metabolic processes, including the malate-aspartate shuttle, the oxoglutarate/isocitrate shuttle, in gluconeogenesis from lactate, and in nitrogen metabolism.,similarity:Belongs to the mitochondrial carrier family.,similarity:Contains 3 Solcar repeats., |
| Background | The oxoglutarate/malate carrier transports 2-oxoglutarate across the inner membranes of mitochondria in an electroneutral exchange for malate or other dicarboxylic acids (summary by Iacobazzi et al., 1992 [PubMed 1457818]).[supplied by OMIM, Jan 2011], |

Nanjing BYabscience technology Co.,Ltd



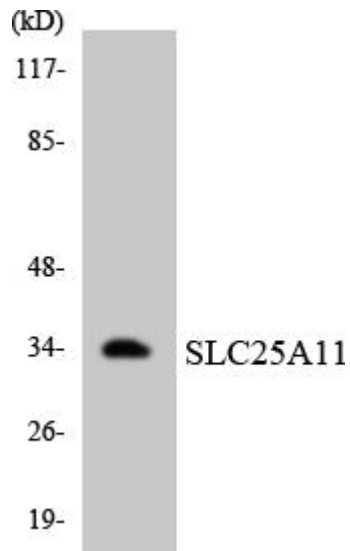
matters needing attention

Avoid repeated freezing and thawing!

Usage suggestions

This product can be used in immunological reaction related experiments. For more information, please consult technical personnel.

Products Images



Western Blot analysis of various cells using OGCP Monoclonal Antibody

Nanjing BYabs science technology Co.,Ltd

网址: www.njbybio.com

官方热线: 025-5229-8998

监督电话: 15950492658