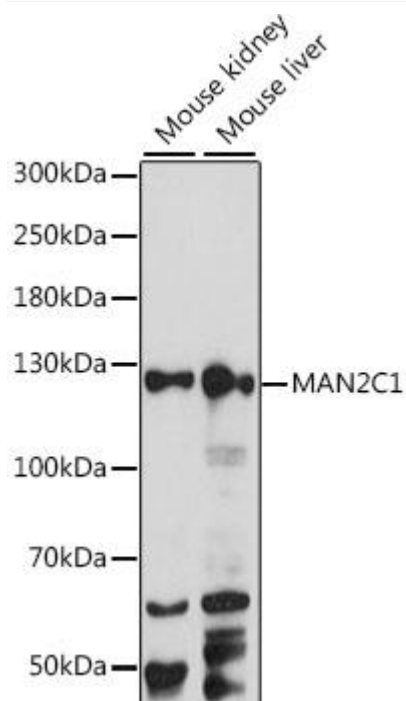




MAN2C1 Mouse mAb

Catalog No	BYmab-18669
Isotype	IgG
Reactivity	Human,Mouse,Rat
Applications	WB
Gene Name	
Protein Name	
Immunogen	Recombinant fusion protein containing a sequence corresponding to amino acids 1-300 of human MAN2C1 (NP_006706.2).
Specificity	
Formulation	
Source	
Purification	Affinity purification
Dilution	WB 1:500-2000
Concentration	1 mg/ml
Purity	≥90%
Storage Stability	-20°C/1 year
Synonyms	MANA; CDDG2; MANA1; MAN6A8; MAN2C1
Observed Band	128kDa
Cell Pathway	
Tissue Specificity	
Function	Predicted to enable alpha-mannosidase activity. Predicted to be involved in oligosaccharide catabolic process. Located in nucleoplasm.
Background	
matters needing attention	Avoid repeated freezing and thawing!
Usage suggestions	This product can be used in immunological reaction related experiments. For more information, please consult technical personnel.



Western blot analysis of various lysates using MAN2C1 Mouse pAb (A15688) at 1:1000 dilution. Secondary antibody: HRP Goat Anti-Mouse IgG (H+L) (AS014) at 1:10000 dilution. Lysates/proteins: 25μ g per lane. Blocking buffer: 3% nonfat dry milk in TBST. Detection: ECL Basic Kit (RM00020). Exposure time: 30s.