



QPCT rabbit pAb

Catalog No	BYab-11932
Isotype	IgG
Reactivity	Human; Mouse
Applications	WB;IHC
Gene Name	QPCT
Protein Name	QPCT
Immunogen	Synthesized peptide derived from human QPCT AA range: 233-283
Specificity	This antibody detects endogenous levels of QPCT at Human/Mouse
Formulation	Liquid in PBS containing 50% glycerol, 0.5% BSA and 0.02% sodium azide.
Source	Polyclonal, Rabbit,IgG
Purification	The antibody was affinity-purified from rabbit antiserum by affinity-chromatography using epitope-specific immunogen.
Dilution	WB 1:500-2000;IHC-p 1:50-300
Concentration	1 mg/ml
Purity	≥90%
Storage Stability	-15°C to -25°C/1 year(Do not lower than -25°C)
Synonyms	
Molecular Weight	40kD
Cell Pathway	Secreted .
Tissue Specificity	
Function	catalytic activity:L-glutaminy-peptide = 5-oxoproly-peptide + NH(3).,cofactor: Binds 1 zinc ion per subunit.,function:Responsible for the biosynthesis of pyroglutamyl peptides. Has a bias against acidic and tryptophan residues adjacent to the N-terminal glutaminy residue and a lack of importance of chain length after the second residue. Also catalyzes N-terminal pyroglutamate formation. In vitro, catalyzes pyroglutamate formation of N-terminally truncated form of APP amyloid-beta peptides [Glu-3]-beta-amyloid. May be involved in the N-terminal pyroglutamate formation of several amyloid-related plaque-forming peptides.,similarity:Belongs to the glutaminy-peptide cyclotransferase family.,
Background	This gene encodes human pituitary glutaminy cyclase, which is responsible for the presence of pyroglutamyl residues in many neuroendocrine peptides. The

Nanjing BYabs science technology Co.,Ltd



amino acid sequence of this enzyme is 86% identical to that of bovine glutaminyl cyclase. [provided by RefSeq, Jul 2008],

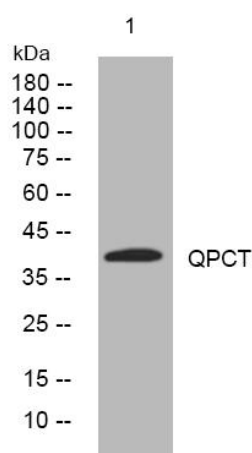
matters needing attention

Avoid repeated freezing and thawing!

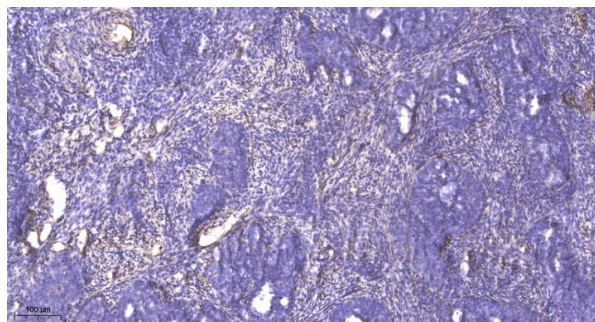
Usage suggestions

This product can be used in immunological reaction related experiments. For more information, please consult technical personnel.

Products Images



Western blot analysis of lysates from KB cells, primary antibody was diluted at 1:1000, 4° over night



Immunohistochemical analysis of paraffin-embedded human cervical carcinoma. 1, Antibody was diluted at 1:200(4° overnight). 2, Tris-EDTA, pH9.0 was used for antigen retrieval. 3, Secondary antibody was diluted at 1:200(room temperature, 45min).

Nanjing BYabs science technology Co.,Ltd

网址: www.njbybio.com

官方热线: 025-5229-8998

监督电话: 15950492658