



# Galectin 3 mouse mAb(ABT-GAL3)

<b>Catalog No</b>	BYab-15481
<b>Isotype</b>	IgG
<b>Reactivity</b>	Human
<b>Applications</b>	IHC;ELISA
<b>Gene Name</b>	LGALS3 MAC2
<b>Protein Name</b>	Galectin 3
<b>Immunogen</b>	Synthesized peptide derived from human Galectin 3
<b>Specificity</b>	This antibody detects endogenous levels of human Galectin 3, TRIS-EDTA of pH9.0 was used for Heat-induced epitope retrieval (HIER)
<b>Formulation</b>	Liquid in PBS containing 50% glycerol, 0.5% BSA and 0.02% sodium azide.
<b>Source</b>	Mouse, Monoclonal/IgG2b, Kappa
<b>Purification</b>	The antibody was affinity-purified from mouse ascites by affinity-chromatography using specific immunogen.
<b>Dilution</b>	IHC 1:50-100. ELISA 1:500-5000
<b>Concentration</b>	1 mg/ml
<b>Purity</b>	≥90%
<b>Storage Stability</b>	-20°C/1 year
<b>Synonyms</b>	Galectin-3 (Gal-3;35 kDa lectin;Carbohydrate-binding protein 35;CBP 35;Galactose-specific lectin 3;Galactoside-binding protein;GALBP;IgE-binding protein;L-31;Laminin-binding protein;Lectin L-29;Mac-2 antigen)
<b>Observed Band</b>	
<b>Cell Pathway</b>	Cytoplasm . Nucleus. Secreted . Secreted by a non-classical secretory pathway and associates with the cell surface. Can be secreted; the secretion is dependent on protein unfolding and facilitated by the cargo receptor TMED10; it results in protein translocation from the cytoplasm into the ERGIC (endoplasmic reticulum-Golgi intermediate compartment) followed by vesicle entry and secretion (PubMed:32272059). .
<b>Tissue Specificity</b>	A major expression is found in the colonic epithelium. It is also abundant in the activated macrophages. Expressed in fetal membranes.
<b>Function</b>	function:Galactose-specific lectin which binds IgE. May mediate with the alpha-3, beta-1 integrin the stimulation by CSPG4 of endothelial cells migration. Together with DMBT1, required for terminal differentiation of columnar epithelial cells during early embryogenesis.,online information:Galectin-3,similarity:Contains 1 galectin domain.,subcellular location:Cytoplasmic in adenomas and carcinomas. May be

**Nanjing BYabscience technology Co.,Ltd**



secreted by a non-classical secretory pathway and associate with the cell surface.,subunit:Probably forms homo- or heterodimers. Interacts with DMBT1 (By similarity). Forms a complex with the ITGA3, ITGB1 and CSPG4. Interacts with LGALS3BP, LYPD3, CYHR1 and UACA.,tissue specificity:A major expression is found in the colonic epithelium. It is also abundant in the activated macrophages.,

**Background**

This gene encodes a member of the galectin family of carbohydrate binding proteins. Members of this protein family have an affinity for beta-galactosides. The encoded protein is characterized by an N-terminal proline-rich tandem repeat domain and a single C-terminal carbohydrate recognition domain. This protein can self-associate through the N-terminal domain allowing it to bind to multivalent saccharide ligands. This protein localizes to the extracellular matrix, the cytoplasm and the nucleus. This protein plays a role in numerous cellular functions including apoptosis, innate immunity, cell adhesion and T-cell regulation. The protein exhibits antimicrobial activity against bacteria and fungi. Alternate splicing results in multiple transcript variants.[provided by RefSeq, Oct 2014],

**matters needing attention**

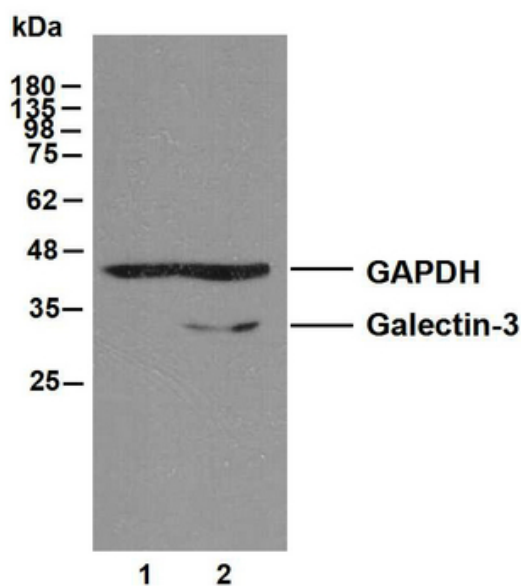
Avoid repeated freezing and thawing!

**Usage suggestions**

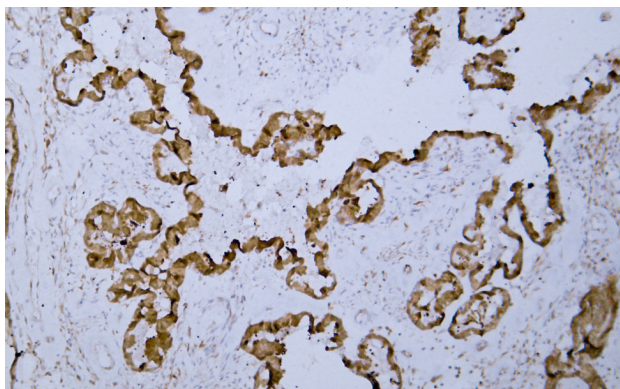
This product can be used in immunological reaction related experiments. For more information, please consult technical personnel.



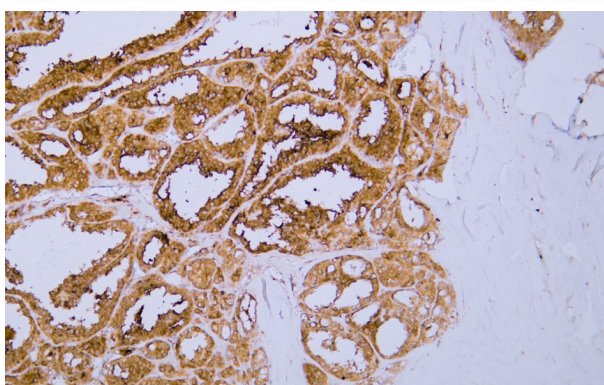
## Products Images



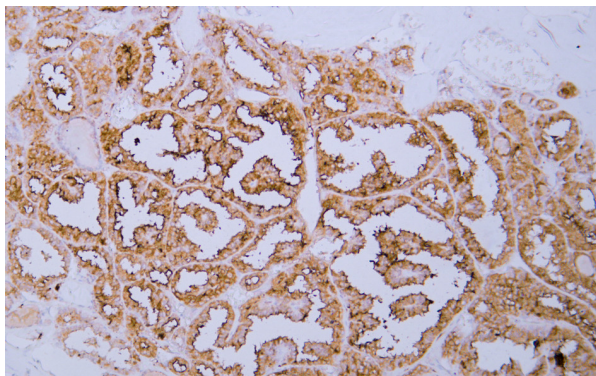
Various whole cell lysates were separated by 10% SDS-PAGE, and the membrane was blotted with anti-Galectin-3 and anti-GAPDH antibody. The HRP-conjugated anti-Mouse IgG antibody was used to detect the antibody. Lane 1 : Galectin-3 knockout HeLa cell lysate Lane 2 : Wild type HeLa cell lysate Predicted band size: 30 kDa Observed band size: 30 kDa



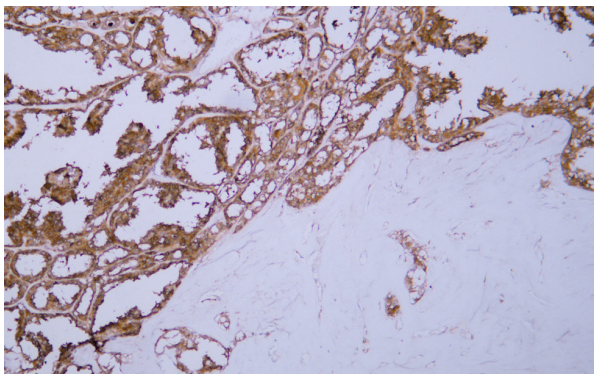
Human ovarian carcinoma tissue was stained with Anti-Galectin 3 (ABT-GAL3) Antibody



Human thyroid papillary carcinoma tissue was stained with Anti-Galectin 3 (ABT-GAL3) Antibody



Human thyroid papillary carcinoma tissue was stained with Anti-Galectin 3 (ABT-GAL3) Antibody



Human thyroid papillary carcinoma tissue was stained with Anti-Galectin 3 (ABT-GAL3) Antibody