



DNA-PKcs mouse mAb

Catalog No	BYab-00094
Isotype	IgG
Reactivity	Human
Applications	WB;IP;ICC;IHC
Gene Name	prkdc
Protein Name	
Immunogen	Purified recombinant human DNA-PKcs protein fragments expressed in E.coli
Specificity	This antibody detects endogenous levels of DNA-PKcs and does not cross-react with related proteins.
Formulation	Liquid in PBS containing 50% glycerol, 0.5% BSA and 0.02% sodium azide.
Source	Monoclonal, Mouse
Purification	The antibody was affinity-purified from mouse ascites by affinity-chromatography using epitope-specific immunogen.
Dilution	wb 1:1000 icc 1:100
Concentration	1 mg/ml
Purity	≥90%
Storage Stability	-20°C/1 year
Synonyms	DNA dependent protein kinase catalytic subunit;DNA PKcs;DNA-dependent protein kinase catalytic subunit;DNA-PK catalytic subunit;DNAPK;DNPK1;hyper radiosensitivity of murine scid mutation, complementing 1;HYRC;HYRC1;p350;p460;PRKDC;PRKDC_HUMAN;protein kinase, DNA activated, catalytic polypeptide;XRCC7.
Observed Band	450kD
Cell Pathway	Nucleus . Nucleus, nucleolus .
Tissue Specificity	Brain,Cervix carcinoma,Epithelium,Fetal lung,Placen
Function	catalytic activity:ATP + a protein = ADP + a phosphoprotein.,enzyme regulation:Inhibited by wortmannin. Activity of the enzyme seems to be attenuated by autophosphorylation.,function:Serine/threonine-protein kinase that acts as a molecular sensor for DNA damage. Involved in DNA nonhomologous end joining (NHEJ) required for double-strand break (DSB) repair and V(D)J recombination. Must be bound to DNA to express its catalytic properties. Promotes processing of

Nanjing BYabscience technology Co.,Ltd



hairpin DNA structures in V(D)J recombination by activation of the hairpin endonuclease artemis (DCLRE1C). The assembly of the DNA-PK complex at DNA ends is also required for the NHEJ ligation step. Required to protect and align broken ends of DNA. May also act as a scaffold protein to aid the localization of DNA repair proteins to the site of damage. Found at the ends of chromosomes, suggesting a further role in the maintenance of

Background

This gene encodes the catalytic subunit of the DNA-dependent protein kinase (DNA-PK). It functions with the Ku70/Ku80 heterodimer protein in DNA double strand break repair and recombination. The protein encoded is a member of the PI3/PI4-kinase family.[provided by RefSeq, Jul 2010],

matters needing attention

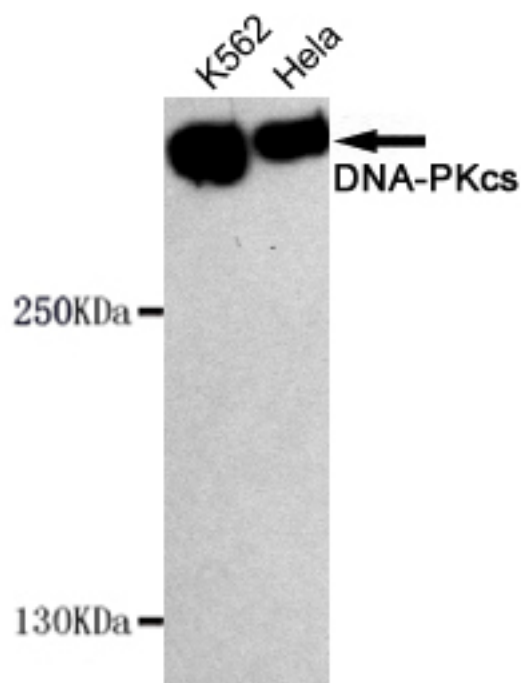
Avoid repeated freezing and thawing!

Usage suggestions

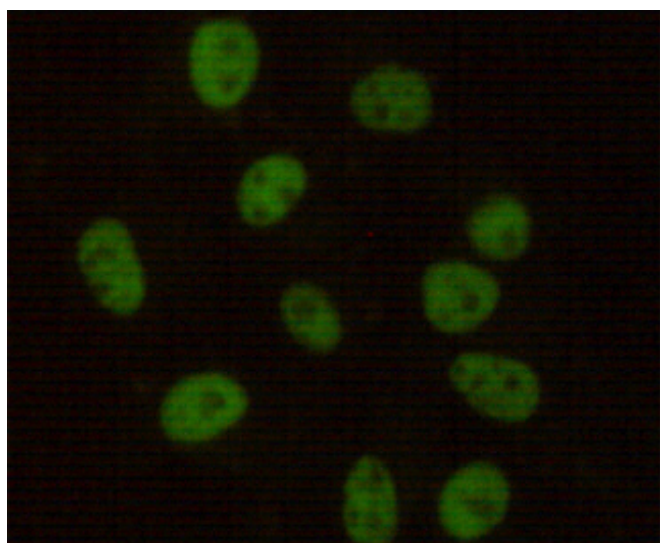
This product can be used in immunological reaction related experiments. For more information, please consult technical personnel.



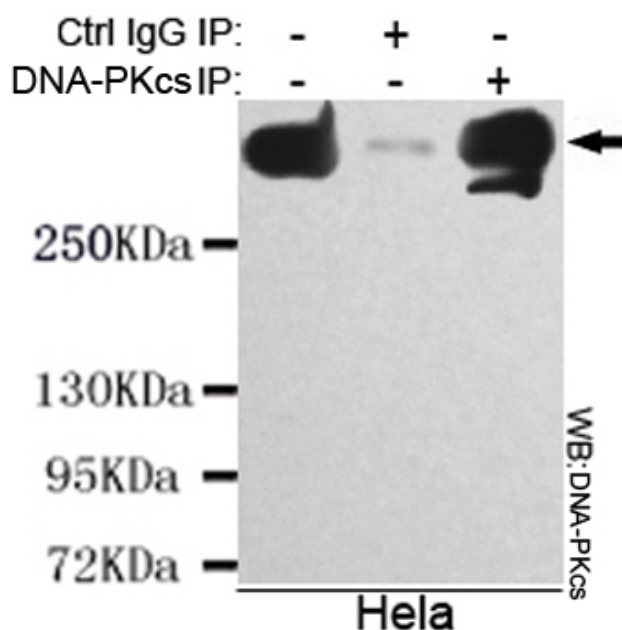
Products Images



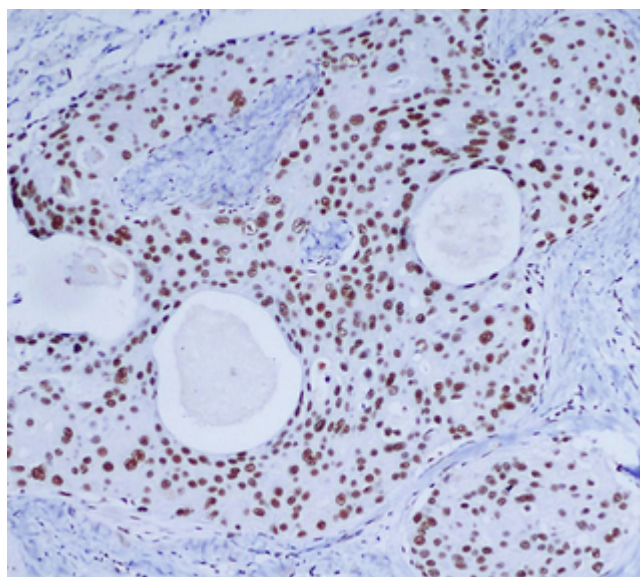
Western blot detection of DNA-PKcs in HeLa and K562 cell lysates using DNA-PKcs mouse mAb (1:1000 diluted). Predicted band size: 450KDa, Observed band size: 450KDa.



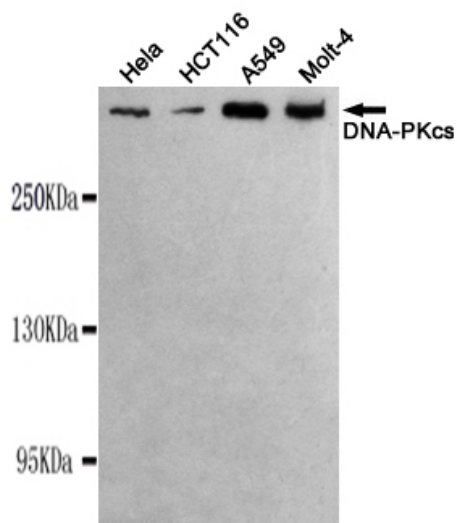
Immunocytochemistry stain of HeLa using DNA-PKcs mouse mAb (1:100).



Immunoprecipitation analysis of HeLa cell lysate using DNA-PKcs mouse mAb.



Immunohistochemical analysis of paraffin-embedded Breast cancer using DNA-PKcs mouse mAb (1/200 dilution). Antigen retrieval was performed by pressure cooking in citrate buffer (pH 6.0).



Western blot detection of DNA-PKcs in HeLa, Molt-4, A549 and HCT116 cell lysates using DNA-PKcs mouse mAb (1:1000 diluted). Predicted band size: 450KDa. Observed band size: 450KDa.