



MTDH Monoclonal Antibody

Catalog No	BYab-00077
Isotype	IgG
Reactivity	Human
Applications	WB;IHC;IF;FCM;ELISA
Gene Name	MTDH
Protein Name	Protein LYRIC
Immunogen	Purified recombinant fragment of human MTDH expressed in E. Coli.
Specificity	MTDH Monoclonal Antibody detects endogenous levels of MTDH protein.
Formulation	Ascitic fluid containing 0.03% sodium azide,0.5% BSA, 50%glycerol.
Source	Monoclonal, Mouse
Purification	Affinity purification
Dilution	WB: 1/500 - 1/2000. IHC: 1/200 - 1/1000. Flow cytometry: 1/200 - 1/400. ELISA: 1/10000.. IF 1:50-200
Concentration	1 mg/ml
Purity	≥90%
Storage Stability	-20°C/1 year
Synonyms	MTDH; AEG1; LYRIC; Protein LYRIC; 3D3/LYRIC; Astrocyte elevated gene-1 protein; AEG-1; Lysine-rich CEACAM1 co-isolated protein; Metadherin; Metastasis adhesion protein
Observed Band	
Cell Pathway	Endoplasmic reticulum membrane; Single-pass membrane protein. Nucleus membrane ; Single-pass membrane protein . Cell junction, tight junction . Nucleus, nucleolus . Cytoplasm, perinuclear region. In epithelial cells, recruited to tight junctions (TJ) during the maturation of the TJ complexes. A nucleolar staining may be due to nuclear targeting of an isoform lacking the transmembrane domain (By similarity). TNF-alpha causes translocation from the cytoplasm to the nucleus. .
Tissue Specificity	Widely expressed with highest levels in muscle-dominating organs such as skeletal muscle, heart, tongue and small intestine and in endocrine glands such as thyroid and adrenal gland. Overexpressed in various cancers including breast, brain, prostate, melanoma and glioblastoma multiforme.
Function	caution:Was originally (PubMed:15093543) thought to be a type II membrane protein but this is inconsistent with the results of multiple phosphorylation studies because this topology would locate the phosphorylation sites in the lumen or

Nanjing BYabscience technology Co.,Ltd

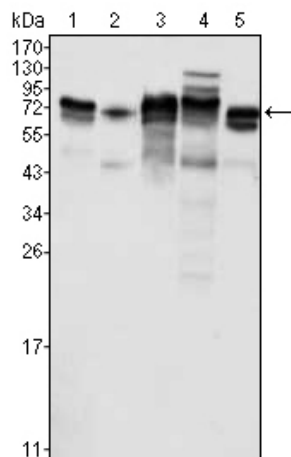


	extracellularly rather than in the cytoplasm.,function:Downregulates SLC1A2/EAAT2 promoter activity when expressed ectopically. Activates the nuclear factor kappa-B (NF-kappa-B) transcription factor. Promotes anchorage-independent growth of immortalized melanocytes and astrocytes which is a key component in tumor cell expansion. Promotes lung metastasis and also has an effect on bone and brain metastasis, possibly by enhancing the seeding of tumor cells to the target organ endothelium. Induces chemoresistance.,induction:By TNF-alpha (at protein level). By HIV-1 infection of primary fetal astrocytes.,miscellaneous:Knockdown significantly reduces the adhesi
Background	caution:Was originally (PubMed:15093543) thought to be a type II membrane protein but this is inconsistent with the results of multiple phosphorylation studies because this topology would locate the phosphorylation sites in the lumen or extracellularly rather than in the cytoplasm.,function:Downregulates SLC1A2/EAAT2 promoter activity when expressed ectopically. Activates the nuclear factor kappa-B (NF-kappa-B) transcription factor. Promotes anchorage-independent growth of immortalized melanocytes and astrocytes which is a key component in tumor cell expansion. Promotes lung metastasis and also has an effect on bone and brain metastasis, possibly by enhancing the seeding of tumor cells to the target organ endothelium. Induces chemoresistance.,induction:By TNF-alpha (at protein level). By HIV-1 infection of primary fetal astrocytes.,miscellaneous:Knockdown significantly reduces the adhesion of cancer cells to lung microvascular endothelial cells and the reciprocal effect is observed following overexpression.,subcellular location:In epithelial cells, recruited to tight junctions (TJ) during the maturation of the TJ complexes. A nucleolar staining may be due to nuclear targeting of an isoform lacking the transmembrane domain (By similarity). TNF-alpha causes translocation from the cytoplasm to the nucleus.,subunit:Interacts with BCIPP, CREBBP/CBP and RELA/p65.,tissue specificity:Widely expressed with highest levels in muscle-dominating organs such as skeletal muscle, heart, tongue and small intestine and in endocrine glands such as thyroid and adrenal gland. Overexpressed in various cancers including breast, brain, prostate, melanoma and glioblastoma multiforme.,
matters needing attention	Avoid repeated freezing and thawing!
Usage suggestions	This product can be used in immunological reaction related experiments. For more information, please consult technical personnel.

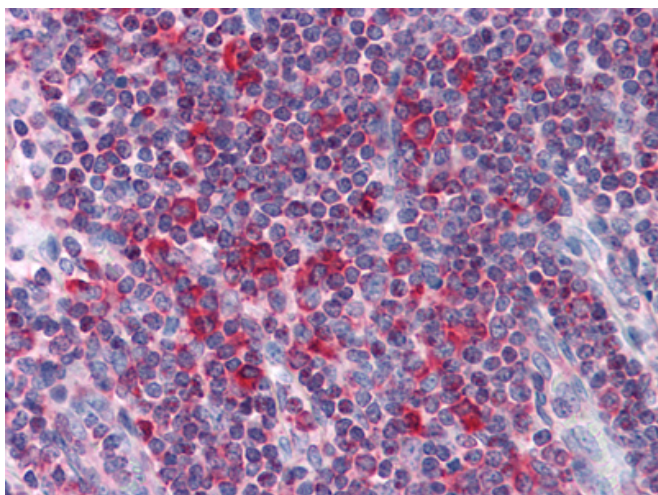
Nanjing BYabscience technology Co.,Ltd



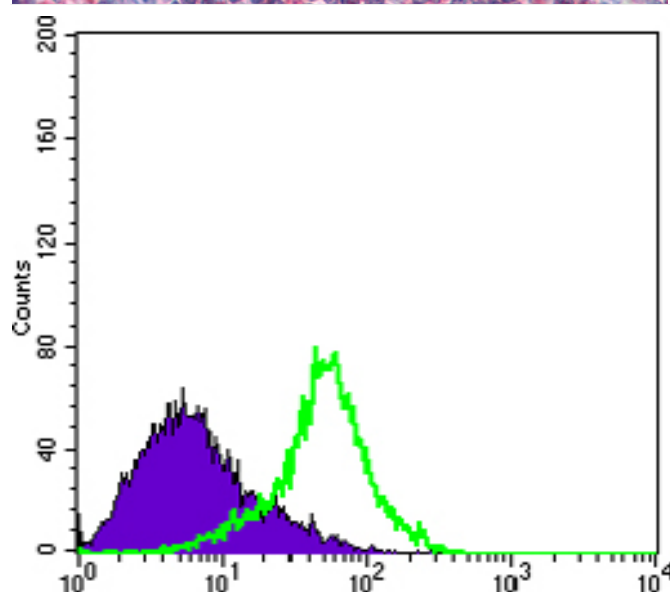
Products Images



Western Blot analysis using MTDH Monoclonal Antibody against K562 (1), SKBR-3 (2), T47D (3), HeLa (4) and MCF-7 (5) cell lysate.



Immunohistochemistry analysis of paraffin-embedded human Liver tissues with AEC staining using MTDH Monoclonal Antibody.



Flow cytometric analysis of HeLa cells using MTDH Monoclonal Antibody (green) and negative control (purple).

Nanjing BYabs science technology Co.,Ltd

网址: www.njbybio.com

官方热线: 025-5229-8998

监督电话: 15950492658

