



Mcl-1 Monoclonal Antibody

Catalog No	BYab-00073
Isotype	IgG
Reactivity	Human
Applications	WB;IHC;IF;ELISA
Gene Name	MCL1
Protein Name	Induced myeloid leukemia cell differentiation protein Mcl-1
Immunogen	Purified recombinant fragment of human MCL-1 expressed in E. Coli.
Specificity	Mcl-1 Monoclonal Antibody detects endogenous levels of Mcl-1 protein.
Formulation	Purified antibody in PBS containing 0.03% sodium azide.
Source	Monoclonal, Mouse
Purification	Affinity purification
Dilution	Western Blot: 1/500 - 1/2000. Immunohistochemistry: 1/200 - 1/1000. Immunofluorescence: 1/200 - 1/1000. ELISA: 1/10000. Not yet tested in other applications.
Concentration	1 mg/ml
Purity	≥90%
Storage Stability	-20°C/1 year
Synonyms	MCL1; BCL2L3; Induced myeloid leukemia cell differentiation protein Mcl-1; Bcl-2-like protein 3; Bcl2-L-3; Bcl-2-related protein EAT/mcl1; mcl1/EAT
Observed Band	About 40kd in human,39kd in mouse and rat
Cell Pathway	Membrane ; Single-pass membrane protein . Cytoplasm. Mitochondrion. Nucleus, nucleoplasm. Cytoplasmic, associated with mitochondria.
Tissue Specificity	Ewing sarcoma,Mammary gland,Myeloid leukemia cell,Neuroblastoma,Placenta,Th
Function	function:Involved in the regulation of apoptosis versus cell survival, and in the maintenance of viability but not of proliferation. Mediates its effects by interactions with a number of other regulators of apoptosis. Isoform 1 inhibits apoptosis while isoform 2 promotes it.,induction:Expression increases early during phorbol-ester induced differentiation along the monocyte/macrophage pathway in myeloid leukemia cell lines ML-1. Rapidly up-regulated by CSF2 in ML-1 cells. Up-regulated by heat-shock induced differentiation. Expression increases early during retinoic acid-induced differentiation.,PTM:Cleaved by CASP3 during apoptosis. In intact cells cleavage occurs preferentially after Asp-127, yielding a pro-apoptotic 28 kDa C-terminal fragment.,PTM:Phosphorylated on Thr-163.

Nanjing BYabscience technology Co.,Ltd



Treatment with taxol or okadaic acid induces phosphorylation on additional sites.,PTM:Rapidly degraded in the abs

Background

This gene encodes an anti-apoptotic protein, which is a member of the Bcl-2 family. Alternative splicing results in multiple transcript variants. The longest gene product (isoform 1) enhances cell survival by inhibiting apoptosis while the alternatively spliced shorter gene products (isoform 2 and isoform 3) promote apoptosis and are death-inducing. [provided by RefSeq, Oct 2010],

matters needing attention

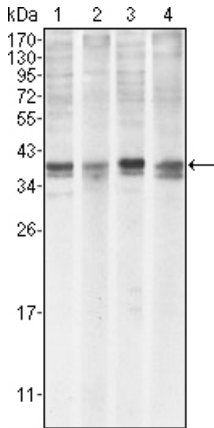
Avoid repeated freezing and thawing!

Usage suggestions

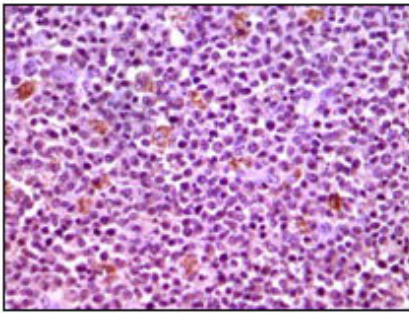
This product can be used in immunological reaction related experiments. For more information, please consult technical personnel.



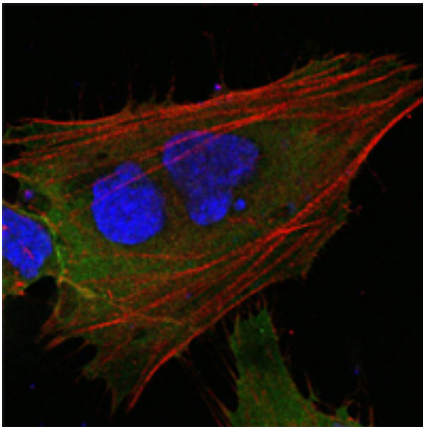
Products Images



Western Blot analysis using Mcl-1 Monoclonal Antibody against HeLa (1), BCBL-1 (2), Jurkat (3) and HL60 (4) cell lysate.



Immunohistochemistry analysis of paraffin-embedded human lymphnode tissues with DAB staining using Mcl-1 Monoclonal Antibody.



Confocal immunofluorescence analysis of HepG2 cells using Mcl-1 Monoclonal Antibody (green). Red: Actin filaments have been labeled with DY-554 phalloidin. Blue: DRAQ5 fluorescent DNA dye.

Nanjing BYabs science technology Co.,Ltd

网址: www.njbybio.com

官方热线: 025-5229-8998

监督电话: 15950492658