



Mammaglobin A Monoclonal Antibody

Catalog No	BYab-00072
Isotype	IgG
Reactivity	Human
Applications	WB;IHC;IF;FCM;ELISA
Gene Name	SCGB2A2
Protein Name	Mammaglobin-A
Immunogen	Purified recombinant fragment of human Mammaglobin A expressed in E. Coli.
Specificity	Mammaglobin A Monoclonal Antibody detects endogenous levels of Mammaglobin A protein.
Formulation	Ascitic fluid containing 0.03% sodium azide,0.5% BSA, 50%glycerol.
Source	Monoclonal, Mouse
Purification	Affinity purification
Dilution	Western Blot: 1/500 - 1/2000. Immunohistochemistry: 1/200 - 1/1000. Immunofluorescence: 1/200 - 1/1000. Flow cytometry: 1/200 - 1/400. ELISA: 1/10000. Not yet tested in other applications.
Concentration	1 mg/ml
Purity	≥90%
Storage Stability	-20°C/1 year
Synonyms	SCGB2A2; MGB1; UGB2; Mammaglobin-A; Mammaglobin-1; Secretoglobin family 2A member 2
Observed Band	
Cell Pathway	Secreted .
Tissue Specificity	Mammary gland specific. Over-expressed in breast cancer.
Function	similarity:Belongs to the secretoglobin family. Lipophilin subfamily.,tissue specificity:Mammary gland specific. Over-expressed in breast cancer.,
Background	similarity:Belongs to the secretoglobin family. Lipophilin subfamily.,tissue specificity:Mammary gland specific. Over-expressed in breast cancer.,
matters needing attention	Avoid repeated freezing and thawing!

Nanjing BYabscience technology Co.,Ltd

网址: www.njbybio.com

官方热线: 025-5229-8998

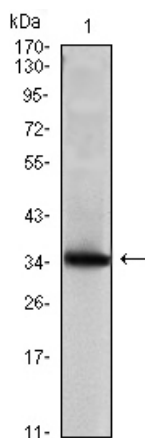
监督电话: 15950492658



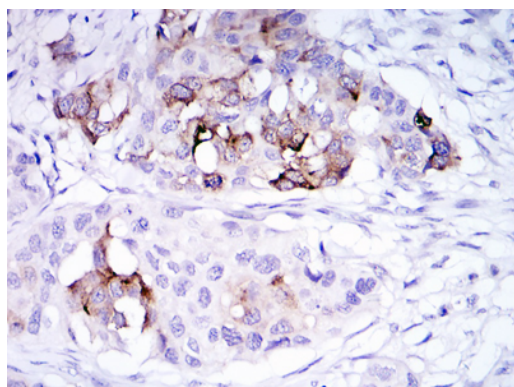
Usage suggestions

This product can be used in immunological reaction related experiments. For more information, please consult technical personnel.

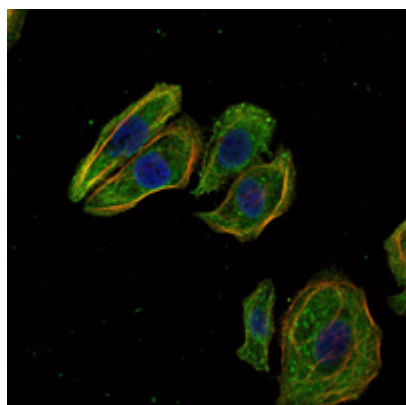
Products Images



Western Blot analysis using Mammaglobin A Monoclonal Antibody against Mammaglobin A recombinant protein (1).



Immunohistochemistry analysis of paraffin-embedded mammary cancer tissues with DAB staining using Mammaglobin A Monoclonal Antibody.



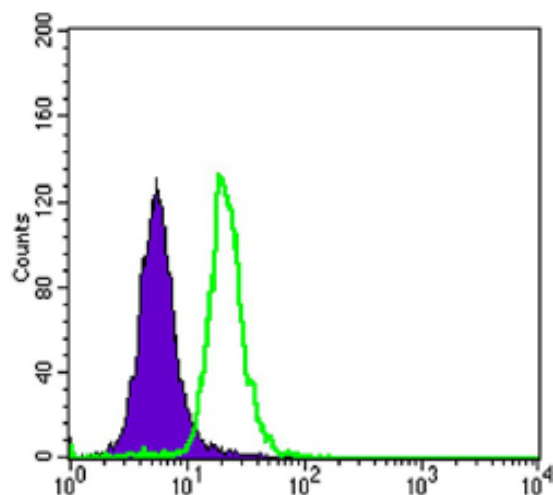
Immunofluorescence analysis of HeLa cells using Mammaglobin A Monoclonal Antibody (green). Blue: DRAQ5 fluorescent DNA dye. Red: Actin filaments have been labeled with Alexa Fluor-555 phalloidin.

Nanjing BYabs science technology Co.,Ltd

网址: www.njbybio.com

官方热线: 025-5229-8998

监督电话: 15950492658



Flow cytometric analysis of SK-BR-3 cells using Mammaglobin A Monoclonal Antibody (green) and negative control (purple).