



# Cytokeratin 18 mouse mAb(ABT054)

<b>Catalog No</b>	BYab-17640
<b>Isotype</b>	IgG
<b>Reactivity</b>	Human;Mouse;Rat
<b>Applications</b>	IHC, WB
<b>Gene Name</b>	KRT18 CYK18 PIG46
<b>Protein Name</b>	Cytokeratin-18
<b>Immunogen</b>	Synthesized peptide derived from human CK18
<b>Specificity</b>	The antibody can specifically recognize human CK18 protein, and shows no cross reaction with CK1, 5, 6, 7, 8, 10, 13, 14, 15, 19, 20. In western blotting of Hela and MCF7 cell lysates, the antibody c
<b>Formulation</b>	Liquid in PBS containing 50% glycerol, 0.5% BSA and 0.46% sodium azide.
<b>Source</b>	Mouse, Monoclonal/IgG2b, Kappa
<b>Purification</b>	The antibody was affinity-purified from mouse ascites by affinity-chromatography using specific immunogen.
<b>Dilution</b>	IHC-p 1:100-500, WB 1:200-1000, IF 1:100-500
<b>Concentration</b>	1 mg/ml
<b>Purity</b>	≥90%
<b>Storage Stability</b>	-20°C/1 year
<b>Synonyms</b>	Keratin, type I cytoskeletal 18 (Cell proliferation-inducing gene 46 protein;Cytokeratin-18;CK-18;Keratin-18;K18)
<b>Observed Band</b>	
<b>Cell Pathway</b>	Cytoplasm, perinuclear region. Nucleus, nucleolus.
<b>Tissue Specificity</b>	Expressed in colon, placenta, liver and very weakly in exocervix. Increased expression observed in lymph nodes of breast carcinoma.
<b>Function</b>	disease:Defects in KRT18 are a cause of cryptogenic cirrhosis [MIM:215600].,function:Involved in the uptake of thrombin-antithrombin complexes by hepatic cells (By similarity). When phosphorylated, plays a role in filament reorganization. Involved in the delivery of mutated CFTR to the plasma membrane. Together with KRT8, is involved in interleukin-6 (IL-6)-mediated barrier protection.,induction:By IL-6.,miscellaneous:There are two types of cytoskeletal and microfibrillar keratin: I (acidic; 40-55 kDa) and II (neutral to basic; 56-70 kDa).,PTM:O-glycosylated at multiple sites; glycans consist of single N-acetylglucosamine residues.,PTM:Phosphorylation at Ser-34 increases during mitosis. Hyperphosphorylated at Ser-53 in diseased cirrhosis liver.

**Nanjing BYabscience technology Co.,Ltd**



Phosphorylation increases by IL-6.,PTM:Proteolytically cleaved by caspases during epithelial cell apoptosis. Cleavage occurs at Asp-238 by either

**Background**

KRT18 encodes the type I intermediate filament chain keratin 18. Keratin 18, together with its filament partner keratin 8, are perhaps the most commonly found members of the intermediate filament gene family. They are expressed in single layer epithelial tissues of the body. Mutations in this gene have been linked to cryptogenic cirrhosis. Two transcript variants encoding the same protein have been found for this gene. [provided by RefSeq, Jul 2008],

**matters needing attention**

Avoid repeated freezing and thawing!

**Usage suggestions**

This product can be used in immunological reaction related experiments. For more information, please consult technical personnel.

Nanjing BYabscience technology Co.,Ltd

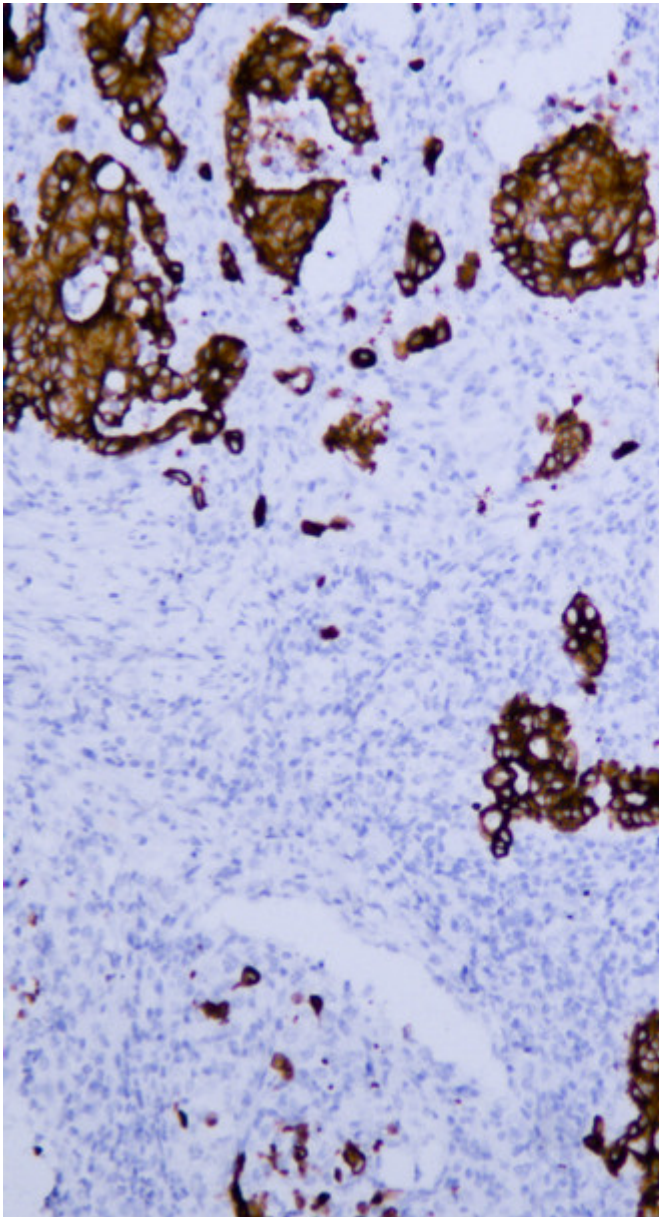
网址: [www.njbybio.com](http://www.njbybio.com)

官方热线: 025-5229-8998

监督电话: 15950492658



## Products Images



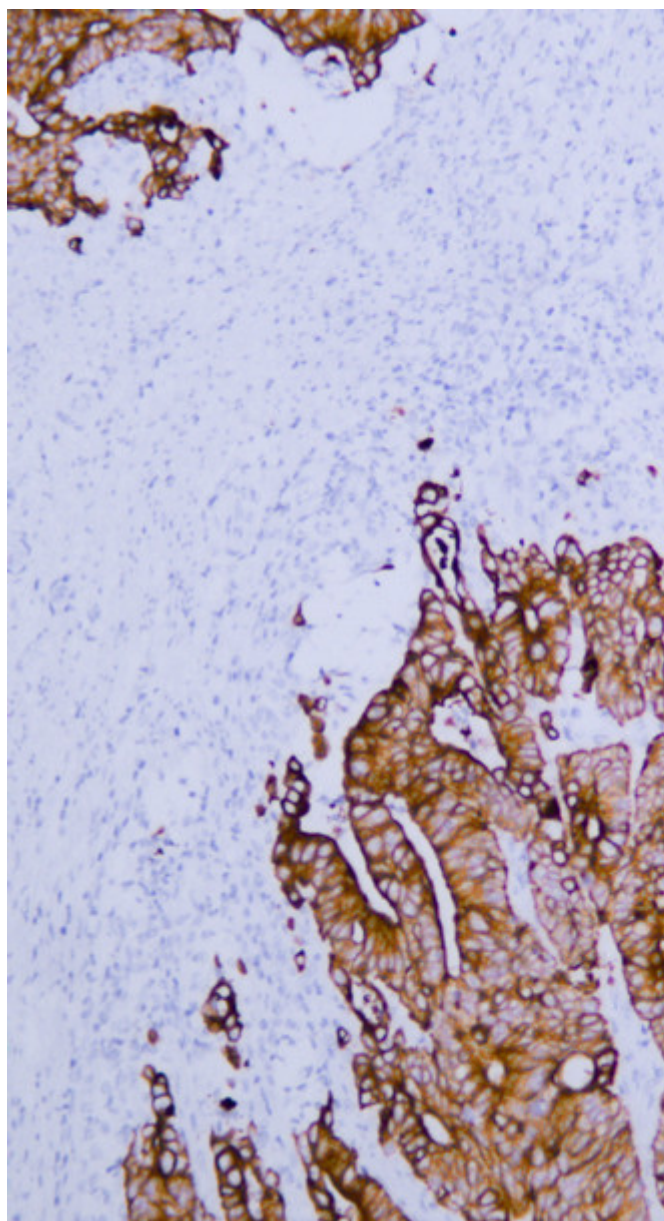
Human colon carcinoma tissue was stained with Anti-Cytokeratin 18 (ABT054) Antibody

Nanjing BYabscience technology Co.,Ltd

网址: [www.njbybio.com](http://www.njbybio.com)

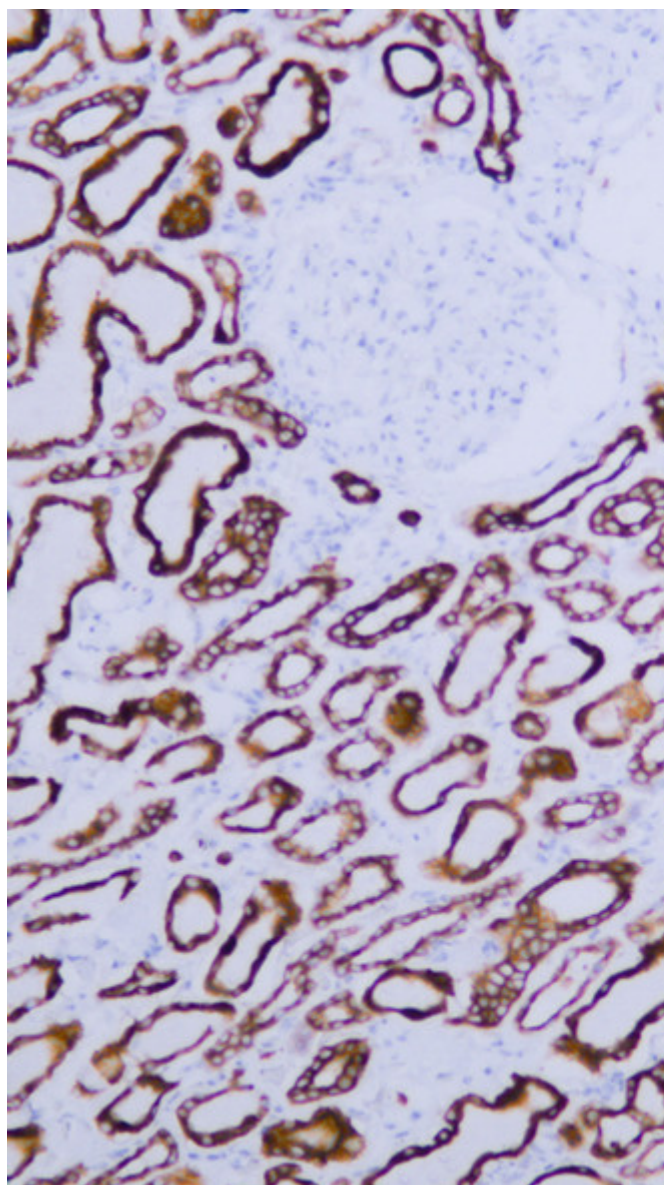
官方热线: 025-5229-8998

监督电话: 15950492658

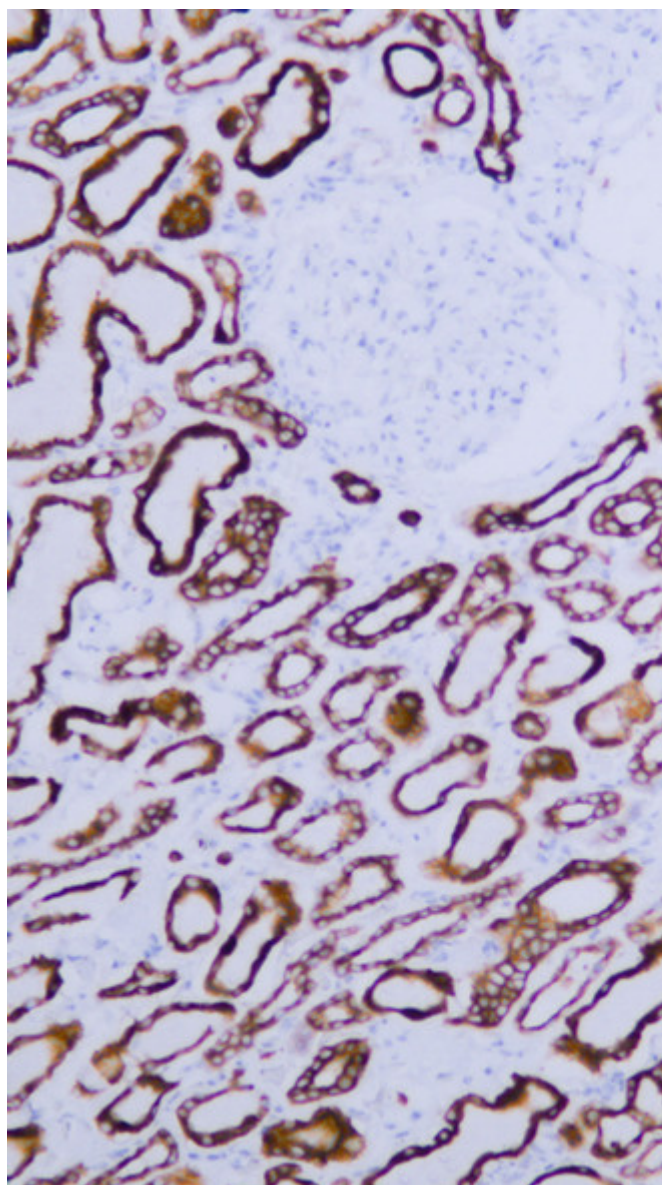


Human colon carcinoma tissue was stained with Anti-Cytokeratin 18 (ABT054) Antibody





Human kidney tissue was stained with Anti-Cytokeratin 18 (ABT054) Antibody



Various whole cell lysates were separated by 10% SDS-PAGE, and the membrane was blotted with anti-CK18 antibody at 1ug/ml. The HRP-conjugated anti-Mouse IgG antibody was used to detect the antibody. Predicted band size: 48 kDa