



# Cytokeratin 15 mouse mAb(ABT058)

Catalog No	BYab-17638
Isotype	IgG
Reactivity	Human
Applications	IHC;WB;IF
Gene Name	KRT15 KRTB
Protein Name	Cytokeratin-15
Immunogen	Synthesized peptide derived from human CK15
Specificity	The antibody can specifically recognize human CK15 protein. In immunohistochemistry on formalin-fixed, paraffin-embedded tissue sections, the antibody specifically labels the squamous epithelial cell
Formulation	Liquid in PBS containing 50% glycerol, 0.5% BSA and 0.118% sodium azide.
Source	Mouse, Monoclonal/IgG1, Kappa
Purification	The antibody was affinity-purified from mouse ascites by affinity-chromatography using specific immunogen.
Dilution	IHC-p 1:100-500, WB 1:200-1000, IF 1:100-500
Concentration	1 mg/ml
Purity	≥90%
Storage Stability	-20°C/1 year
Synonyms	Keratin, type I cytoskeletal 15 (Cytokeratin-15;CK-15;Keratin-15;K15)
Observed Band	
Cell Pathway	nucleus,intermediate filament,extracellular exosome,
Tissue Specificity	Expressed in a discontinuous manner in the basal cell layer of adult skin epidermis, but continuously in the basal layer of fetal skin epidermis and nail. Also expressed in the outer root sheath above the hair bulb in hair follicle (at protein level). Expressed homogeneously in all cell layers of the esophagus and exocervix, but detected in the basal cell layer only of oral mucosa, skin and in the basal plus the next two layers of the suprabasal epithelium of the palate.
Function	miscellaneous:There are two types of cytoskeletal and microfibrillar keratin: I (acidic; 40-55 kDa) and II (neutral to basic; 56-70 kDa).,similarity:Belongs to the intermediate filament family.,subunit:Heterotetramer of two type I and two type II keratins.,tissue specificity:Expressed in a discontinuous manner in the basal cell layer of adult skin epidermis, but continuously in the basal layer of fetal skin epidermis and nail. Also expressed in the outer root sheath above the hair bulb in

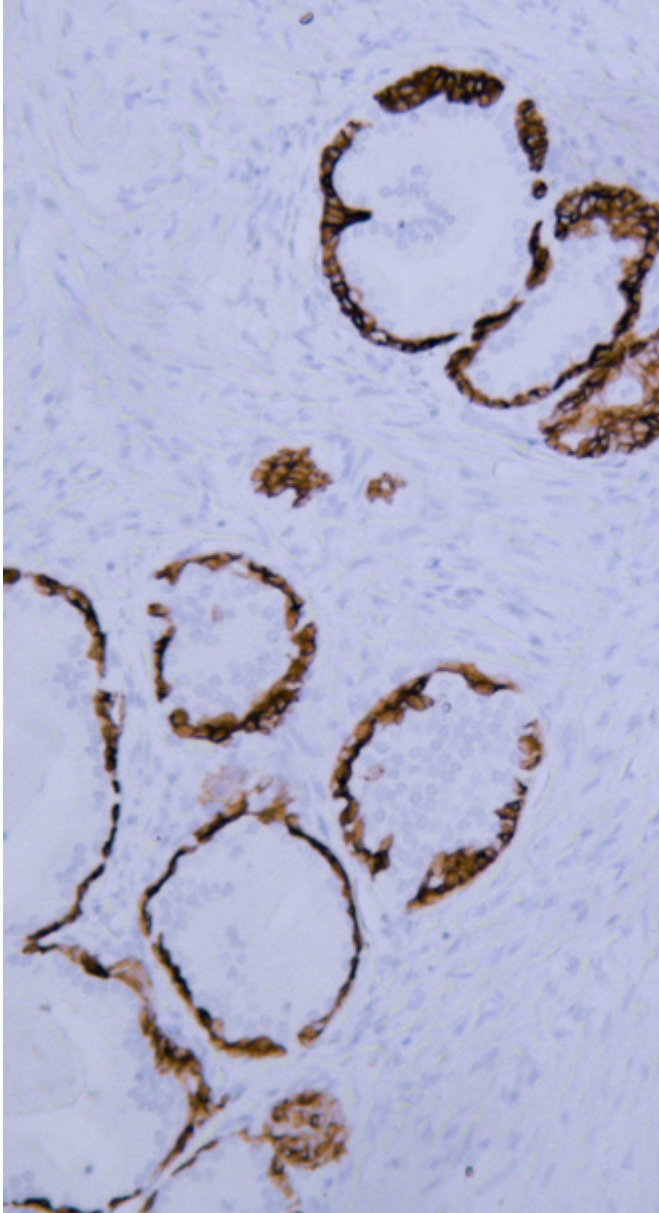
**Nanjing BYabscience technology Co.,Ltd**



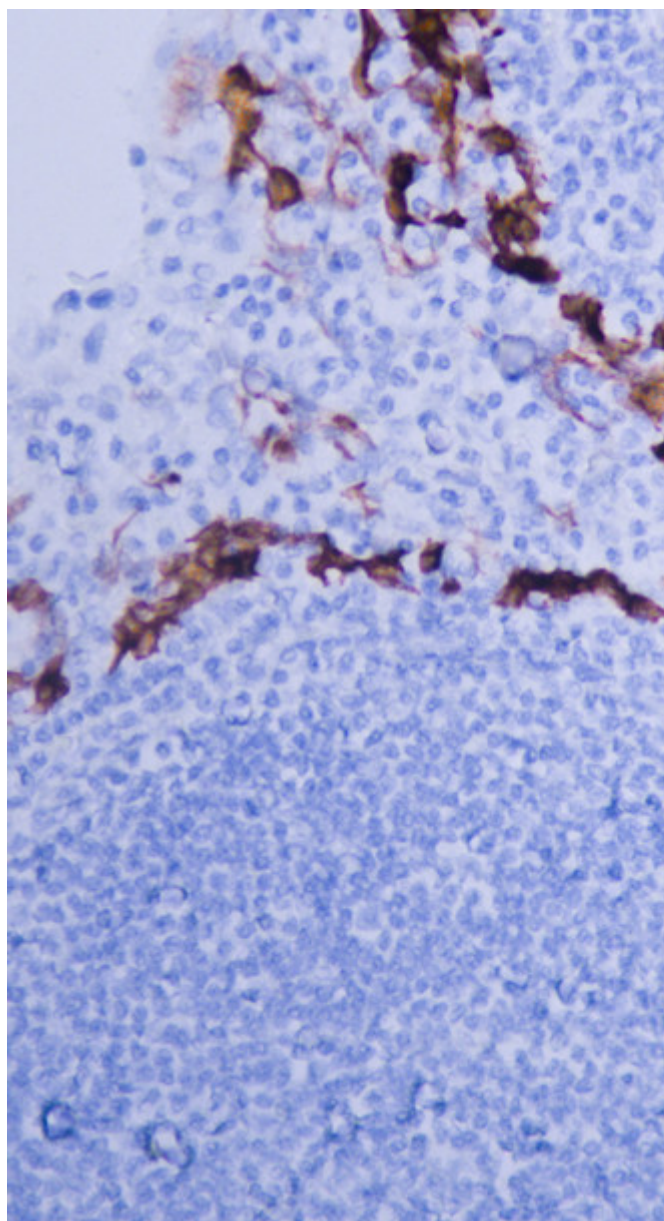
	hair follicle (at protein level). Expressed homogeneously in all cell layers of the esophagus and exocervix, but detected in the basal cell layer only of oral mucosa, skin and in the basal plus the next two layers of the suprabasal epithelium of the palate.,
Background	The protein encoded by this gene is a member of the keratin gene family. The keratins are intermediate filament proteins responsible for the structural integrity of epithelial cells and are subdivided into cytokeratins and hair keratins. Most of the type I cytokeratins consist of acidic proteins which are arranged in pairs of heterotypic keratin chains and are clustered in a region on chromosome 17q21.2. [provided by RefSeq, Jul 2008],
matters needing attention	Avoid repeated freezing and thawing!
Usage suggestions	This product can be used in immunological reaction related experiments. For more information, please consult technical personnel.



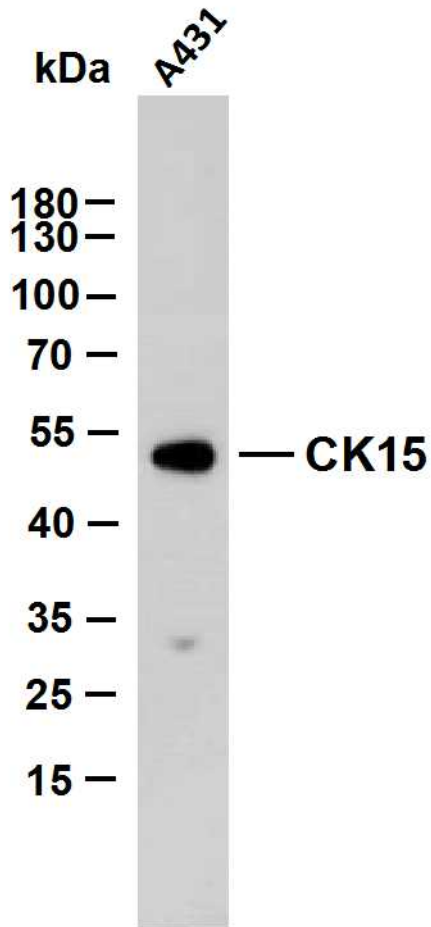
## Products Images



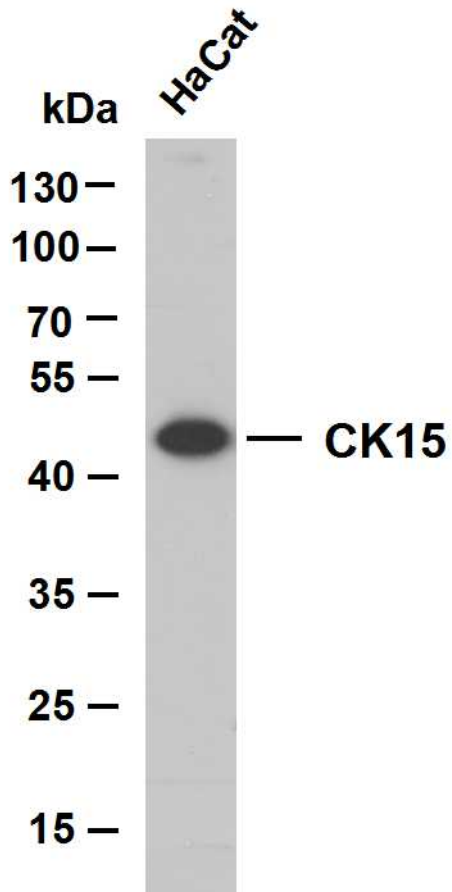
Human prostate tissue was stained with  
Anti-Cytokeratin 15 (ABT058) Antibody



Human tonsil tissue was stained with Anti-Cytokeratin 15 (ABT058) Antibody



A431 whole cell lysates were separated by 10% SDS-PAGE, and the membrane was blotted with anti-CK15(ABT058) antibody. The HRP-conjugated Goat anti-Mouse IgG(H + L) antibody was used to detect the antibody. Lane 1: A431 Predicted band size: 49kDa Observed band size: 49kDa



Hacat whole cell lysates were separated by 10% SDS-PAGE, and the membrane was blotted with anti-CK15(ABT058) antibody. The HRP-conjugated Goat anti-Mouse IgG(H + L) antibody was used to detect the antibody. Lane 1: Hacat Predicted band size: 49kDa Observed band size: 49kDa