



MUC2 (ABT390) Mouse mAb

Catalog No	BYab-17379
Isotype	IgG
Reactivity	Only Human
Applications	IHC
Gene Name	MUC2 SMUC
Protein Name	Mucin-2 (MUC-2) (Intestinal mucin-2)
Immunogen	Synthesized peptide derived from human MUC2
Specificity	This antibody detects endogenous levels of human MUC2. Heat-induced epitope retrieval (HIER) TRIS-EDTA of pH8.0 was highly recommended as antigen repair method in paraffin section
Formulation	Liquid in PBS containing 50% glycerol, 0.5% BSA and 0.02% sodium azide.
Source	Mouse, Monoclonal/IgG2b, Kappa
Purification	The antibody was affinity-purified from mouse ascites by affinity-chromatography using specific immunogen.
Dilution	IHC-p 1:100-500. IF 1:50-200
Concentration	1 mg/ml
Purity	≥90%
Storage Stability	-20°C/1 year
Synonyms	
Observed Band	
Cell Pathway	Secreted. In the intestine, secreted into the inner and outer mucus layers. .
Tissue Specificity	Colon, small intestine, colonic tumors, bronchus, cervix and gall bladder.
Function	function:Coats the epithelia of the intestines, airways, and other mucus membrane-containing organs. Thought to provide a protective, lubricating barrier against particles and infectious agents at mucosal surfaces. Major constituent of both the inner and outer mucus layers of the colon and may play a role in excluding bacteria from the inner mucus layer.,polymorphism:The number of repeats is highly polymorphic and varies among different alleles.,PTM:At low pH of 6 and under, undergoes autocatalytic cleavage in vitro in the N-terminal region of the fourth VWD domain. It is likely that this also occurs in vivo and is triggered by the low pH of the late secretory pathway.,PTM:May undergo proteolytic cleavage in the outer mucus layer of the colon, contributing to the expanded volume and loose nature of this layer which allows for bacterial colonization in

Nanjing BYabscience technology Co.,Ltd



contrast to the inner mucus layer wh

Background

This gene encodes a member of the mucin protein family. Mucins are high molecular weight glycoproteins produced by many epithelial tissues. The protein encoded by this gene is secreted and forms an insoluble mucous barrier that protects the gut lumen. The protein polymerizes into a gel of which 80% is composed of oligosaccharide side chains by weight. The protein features a central domain containing tandem repeats rich in threonine and proline that varies between 50 and 115 copies in different individuals. Alternatively spliced transcript variants of this gene have been described, but their full-length nature is not known. [provided by RefSeq, Jul 2008],

matters needing attention

Avoid repeated freezing and thawing!

Usage suggestions

This product can be used in immunological reaction related experiments. For more information, please consult technical personnel.

Nanjing BYabscience technology Co.,Ltd

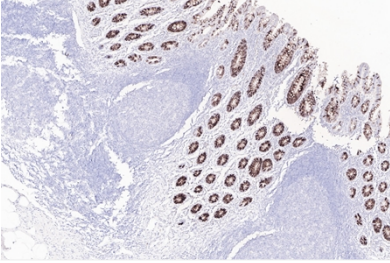
网址: www.njbybio.com

官方热线: 025-5229-8998

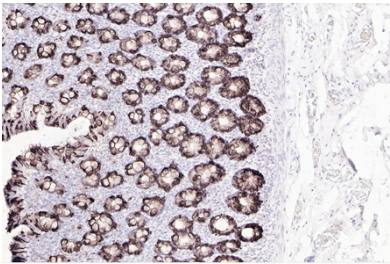
监督电话: 15950492658



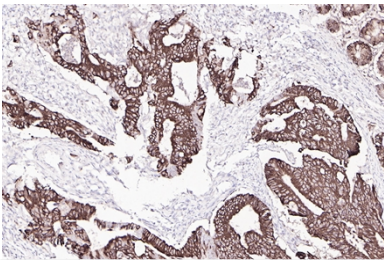
Products Images



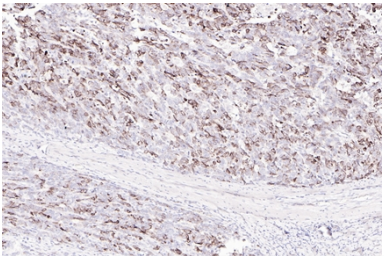
Human appendix tissue was stained with MUC2 (ABT390) Antibody



Human colon tissue was stained with MUC2 (ABT390) Antibody



Human colon carcinom tissue was stained with MUC2 (ABT390) Antibody



Human colon carcinom tissue was stained with MUC2 (ABT390) Antibody



YM6125_5.jpg

Human colon carcinom tissue was stained with MUC2 (ABT390) Antibody