



# GADL1 rabbit pAb

|                           |                                                                                                                                                                                                                                       |
|---------------------------|---------------------------------------------------------------------------------------------------------------------------------------------------------------------------------------------------------------------------------------|
| Catalog No                | BYab-17256                                                                                                                                                                                                                            |
| Isotype                   | IgG                                                                                                                                                                                                                                   |
| Reactivity                | Human, Mouse                                                                                                                                                                                                                          |
| Applications              | IHC, WB                                                                                                                                                                                                                               |
| Gene Name                 | GADL1                                                                                                                                                                                                                                 |
| Protein Name              | Glutamate decarboxylase-like protein 1 (EC 4.1.1.-)                                                                                                                                                                                   |
| Immunogen                 | Synthesized peptide derived from human N-terminal GADL1                                                                                                                                                                               |
| Specificity               | This antibody detects endogenous levels of GADL1 at Human, Mouse                                                                                                                                                                      |
| Formulation               | Liquid in PBS containing 50% glycerol, and 0.02% sodium azide.                                                                                                                                                                        |
| Source                    | Rabbit, polyclonal                                                                                                                                                                                                                    |
| Purification              | The antibody was affinity-purified from rabbit serum by affinity-chromatography using specific immunogen.                                                                                                                             |
| Dilution                  | WB 1:500-2000 IHC 1:50-200                                                                                                                                                                                                            |
| Concentration             | 1 mg/ml                                                                                                                                                                                                                               |
| Purity                    | ≥90%                                                                                                                                                                                                                                  |
| Storage Stability         | -20°C/1 year                                                                                                                                                                                                                          |
| Synonyms                  | Glutamate decarboxylase-like protein 1 (EC 4.1.1.-)                                                                                                                                                                                   |
| Observed Band             |                                                                                                                                                                                                                                       |
| Cell Pathway              |                                                                                                                                                                                                                                       |
| Tissue Specificity        | Expressed very weakly in neurons and not detected in astrocytes, brain or liver.                                                                                                                                                      |
| Function                  | May catalyze the decarboxylation of L-aspartate, 3-sulfino-L-alanine (cysteine sulfinic acid), and L-cysteate to beta-alanine, hypotaurine and taurine, respectively. Does not exhibit any decarboxylation activity toward glutamate. |
| Background                |                                                                                                                                                                                                                                       |
| matters needing attention | Avoid repeated freezing and thawing!                                                                                                                                                                                                  |

Nanjing BYabscience technology Co.,Ltd

网址: [www.njbybio.com](http://www.njbybio.com)

官方热线: 025-5229-8998

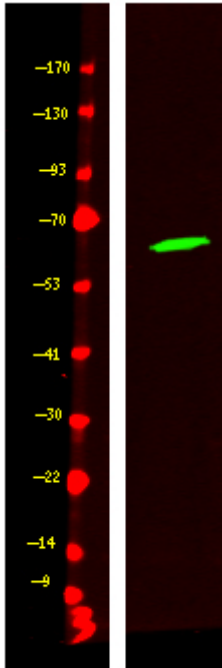
监督电话: 15950492658



## Usage suggestions

This product can be used in immunological reaction related experiments. For more information, please consult technical personnel.

## Products Images



Western Blot analysis of Hela cell lysis, using primary antibody at 1:1000 dilution. Secondary antibody(catalog#:RS23920) was diluted at 1:10000