



# Keap1 (PTR2556) Mouse mAb

<b>Catalog No</b>	BYab-17183
<b>Isotype</b>	IgG
<b>Reactivity</b>	Human, Mouse,Rat
<b>Applications</b>	WB,ELISA
<b>Gene Name</b>	KEAP1 INRF2 KIAA0132 KLHL19
<b>Protein Name</b>	Kelch-like ECH-associated protein 1 (Cytosolic inhibitor of Nrf2) (INrf2) (Kelch-like protein 19)
<b>Immunogen</b>	Synthesized peptide derived from human Keap1
<b>Specificity</b>	This antibody detects endogenous levels of Keap1 at Human, Mouse,Rat
<b>Formulation</b>	PBS, pH7.4, 50% glycerol, 0.03%Proclin 300
<b>Source</b>	Mouse,monoclonal:IgG1,kappa
<b>Purification</b>	Protein G
<b>Dilution</b>	WB 1:500-2000 ELISA 1:5000-20000
<b>Concentration</b>	1 mg/ml
<b>Purity</b>	≥90%
<b>Storage Stability</b>	-20°C/1 year
<b>Synonyms</b>	Kelch-like ECH-associated protein 1 (Cytosolic inhibitor of Nrf2) (INrf2) (Kelch-like protein 19)
<b>Observed Band</b>	70kDa
<b>Cell Pathway</b>	Cytoplasm . Nucleus . Mainly cytoplasmic (PubMed:15601839). In response to selective autophagy, relocalizes to inclusion bodies following interaction with SQSTM1/p62 (PubMed:20452972). .
<b>Tissue Specificity</b>	Broadly expressed, with highest levels in skeletal muscle.
<b>Function</b>	disease:Defects in KEAP1 may be a cause of breast cancer.,disease:Defects in KEAP1 may be involved in non small cell lung carcinomas (NSCLC) and lung adenocarcinoma.,domain:The Kelch repeats mediate interaction with NF2L2/NRF2, BPTF and PGAM5.,enzyme regulation:Ubiquitination and subsequent degradation of PGAM5 is inhibited by oxidative stress and sulforaphane.,function:Retains NFE2L2/NRF2 in the cytosol. Functions as substrate adapter protein for the E3 ubiquitin ligase complex formed by CUL3 and RBX1. Targets NFE2L2/NRF2 for ubiquitination and degradation by the proteasome, thus resulting in the suppression of its transcriptional activity and the repression of antioxidant response element-mediated detoxifying enzyme gene expression. May also retain BPTF in the cytosol. Targets PGAM5 for

**Nanjing BYabs science technology Co.,Ltd**



ubiquitination and degradation by the proteasome.,PTM:Ubiquitinated and subject to proteasomal degra

**Background**

kelch like ECH associated protein 1(KEAP1) Homo sapiens This gene encodes a protein containing KELCH-1 like domains, as well as a BTB/POZ domain. Kelch-like ECH-associated protein 1 interacts with NF-E2-related factor 2 in a redox-sensitive manner and the dissociation of the proteins in the cytoplasm is followed by transportation of NF-E2-related factor 2 to the nucleus. This interaction results in the expression of the catalytic subunit of gamma-glutamylcysteine synthetase. Two alternatively spliced transcript variants encoding the same isoform have been found for this gene. [provided by RefSeq, Jul 2008],

**matters needing attention**

Avoid repeated freezing and thawing!

**Usage suggestions**

This product can be used in immunological reaction related experiments. For more information, please consult technical personnel.

Nanjing BYabscience technology Co.,Ltd

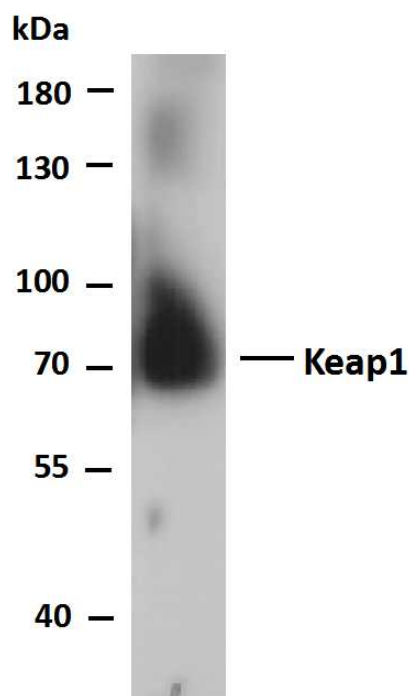
网址: [www.njbybio.com](http://www.njbybio.com)

官方热线: 025-5229-8998

监督电话: 15950492658



## Products Images



Whole cell lysates of A431 were separated by 10% SDS-PAGE, and the membrane was blotted with anti-Keap1 antibody. The HRP-conjugated Goat anti-Rabbit IgG(H + L) antibody was used to detect the antibody. Lane 1: A431 Predicted band size: 69kDa Observed band size: 69kDa

A431 whole cell lysates were separated by 10% SDS-PAGE, and the membrane was blotted with anti-Keap1(PTR2556)antibody. The HRP-conjugated Goat anti-Mouse IgG(H + L) antibody was used to detect the antibody. Lane 1: anti-Keap 1 antibody at 1ug/ml Lane 2: anti-Keap 1 antibody at 0.5ug/ml Predicted band size: 69kDa Observed band size: 69kDa

Whole cell lysates were separated by 10% SDS-PAGE, and the membrane was blotted with anti-Keap1(PTR2556)antibody. The HRP-conjugated Goat anti-Mouse IgG(H + L) antibody was used to detect the antibody. Lane 1: Jurkat Predicted band size: 69kDa Observed band size: 69kDa