



Claudin-19 Polyclonal Antibody

Catalog No	BYab-16955
Isotype	IgG
Reactivity	Human;Rat
Applications	WB;ELISA
Gene Name	CLDN19
Protein Name	Claudin-19
Immunogen	The antiserum was produced against synthesized peptide derived from human CLDN19. AA range:81-130
Specificity	Claudin-19 Polyclonal Antibody detects endogenous levels of Claudin-19 protein.
Formulation	Liquid in PBS containing 50% glycerol, 0.5% BSA and 0.02% sodium azide.
Source	Polyclonal, Rabbit,IgG
Purification	The antibody was affinity-purified from rabbit antiserum by affinity-chromatography using epitope-specific immunogen.
Dilution	Western Blot: 1/500 - 1/2000. ELISA: 1/10000. Not yet tested in other applications.
Concentration	1 mg/ml
Purity	≥90%
Storage Stability	-20°C/1 year
Synonyms	CLDN19; Claudin-19
Observed Band	23kD
Cell Pathway	Cell junction, tight junction. Cell membrane; Multi-pass membrane protein.
Tissue Specificity	Kidney,Lung,Spleen,
Function	disease:Defects in CLDN19 are the cause of hypomagnesemia renal with ocular involvement (HOMGO) [MIM:248190]. HOMGO is a progressive renal disease characterized by primary renal magnesium wasting with hypomagnesemia, hypercalciuria and nephrocalcinosis associated with severe ocular abnormalities such as bilateral chorioretinal scars, macular colobomata, significant myopia and nystagmus. The renal phenotype is virtually undistinguishable from that of patients with HOMG3 with proven CLDN16 mutations.,function:Plays a major role in tight junction-specific obliteration of the intercellular space, through calcium-independent cell-adhesion activity.,similarity:Belongs to the claudin family.,

Nanjing BYabscience technology Co.,Ltd



Background

The product of this gene belongs to the claudin family. It plays a major role in tight junction-specific obliteration of the intercellular space, through calcium-independent cell-adhesion activity. Defects in this gene are the cause of hypomagnesemia renal with ocular involvement (HOMGO). HOMGO is a progressive renal disease characterized by primary renal magnesium wasting with hypomagnesemia, hypercalciuria and nephrocalcinosis associated with severe ocular abnormalities such as bilateral chorioretinal scars, macular colobomata, significant myopia and nystagmus. Alternatively spliced transcript variants encoding distinct isoforms have been identified for this gene. [provided by RefSeq, Jun 2010],

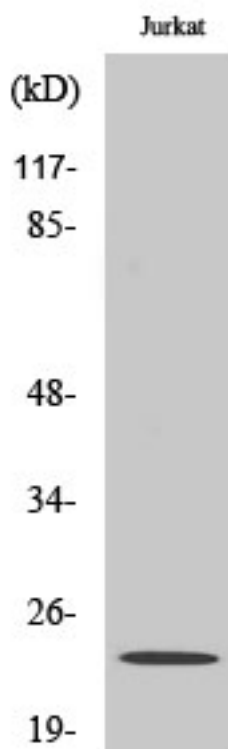
matters needing attention

Avoid repeated freezing and thawing!

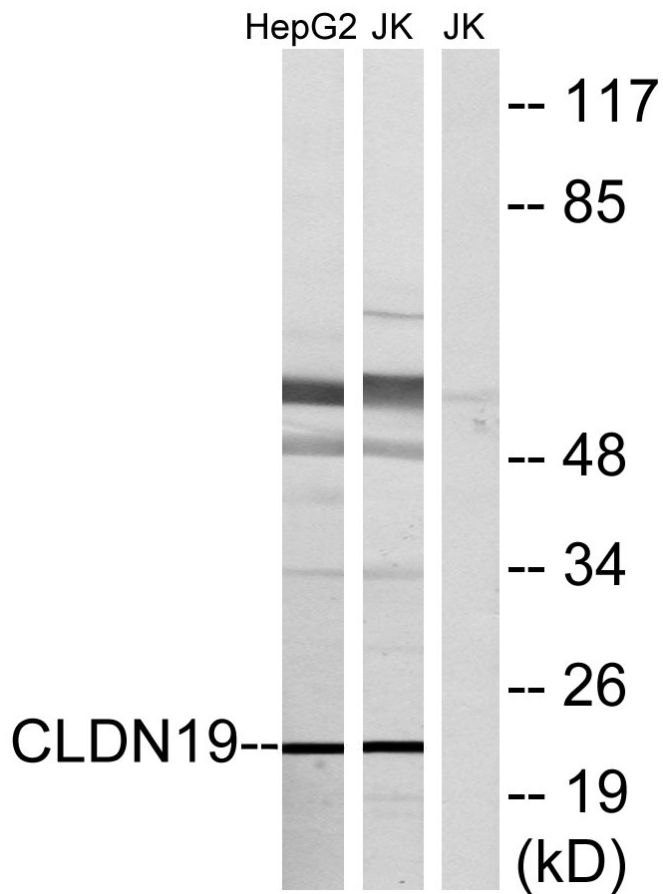
Usage suggestions

This product can be used in immunological reaction related experiments. For more information, please consult technical personnel.

Products Images



Western Blot analysis of various cells using Claudin-19 Polyclonal Antibody diluted at 1:500



Western blot analysis of lysates from Jurkat and HepG2 cells, using CLDN19 Antibody. The lane on the right is blocked with the synthesized peptide.