



# Claudin-11 Polyclonal Antibody

<b>Catalog No</b>	BYab-16954
<b>Isotype</b>	IgG
<b>Reactivity</b>	Human;Mouse;Rat
<b>Applications</b>	WB;ELISA
<b>Gene Name</b>	CLDN11
<b>Protein Name</b>	Claudin-11
<b>Immunogen</b>	The antiserum was produced against synthesized peptide derived from human Claudin 11. AA range:158-207
<b>Specificity</b>	Claudin-11 Polyclonal Antibody detects endogenous levels of Claudin-11 protein.
<b>Formulation</b>	Liquid in PBS containing 50% glycerol, 0.5% BSA and 0.02% sodium azide.
<b>Source</b>	Polyclonal, Rabbit,IgG
<b>Purification</b>	The antibody was affinity-purified from rabbit antiserum by affinity-chromatography using epitope-specific immunogen.
<b>Dilution</b>	Western Blot: 1/500 - 1/2000. ELISA: 1/10000. Not yet tested in other applications.
<b>Concentration</b>	1 mg/ml
<b>Purity</b>	≥90%
<b>Storage Stability</b>	-20°C/1 year
<b>Synonyms</b>	CLDN11; OSP; OTM; Claudin-11; Oligodendrocyte-specific protein
<b>Observed Band</b>	20kD
<b>Cell Pathway</b>	Cell junction, tight junction. Cell membrane ; Multi-pass membrane protein .
<b>Tissue Specificity</b>	Lung,Spinal cord,
<b>Function</b>	function:Plays a major role in tight junction-specific obliteration of the intercellular space, through calcium-independent cell-adhesion activity.,similarity:Belongs to the claudin family.,subunit:Interacts with tetraspanin-3/TSPAN3.,
<b>Background</b>	This gene encodes a member of the claudin family. Claudins are integral membrane proteins and components of tight junction strands. Tight junction strands serve as a physical barrier to prevent solutes and water from passing freely through the paracellular space between epithelial or endothelial cell sheets, and also play critical roles in maintaining cell polarity and signal transductions. The protein encoded by this gene is a major component of central nervous system (CNS) myelin and plays an important role in regulating proliferation and migration

**Nanjing BYabscience technology Co.,Ltd**



of oligodendrocytes. Mouse studies showed that the gene deficiency results in deafness and loss of the Sertoli cell epithelial phenotype in the testis. This protein is a tight junction protein at the human blood-testis barrier (BTB), and the BTB disruption is related to a dysfunction of this gene. Alternatively spliced transcript variants encoding different iso

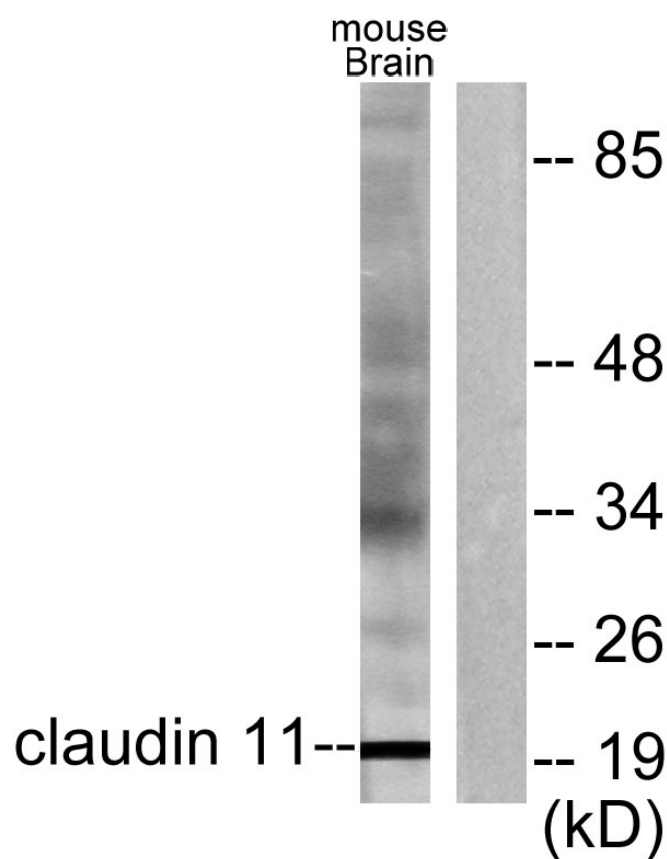
**matters needing attention**

Avoid repeated freezing and thawing!

**Usage suggestions**

This product can be used in immunological reaction related experiments. For more information, please consult technical personnel.

**Products Images**



Western blot analysis of lysates from mouse brain, using Claudin 11 Antibody. The lane on the right is blocked with the synthesized peptide.