



R-Spondin Monoclonal Antibody

Catalog No	BYab-16839
Isotype	IgG
Reactivity	Human
Applications	WB;ELISA
Gene Name	RSPO1
Protein Name	R-spondin-1
Immunogen	Purified recombinant fragment of R-spondin1 expressed in E. Coli.
Specificity	R-Spondin Monoclonal Antibody detects endogenous levels of R-Spondin protein.
Formulation	Ascitic fluid containing 0.03% sodium azide,0.5% BSA, 50%glycerol.
Source	Monoclonal, Mouse
Purification	Affinity purification
Dilution	Western Blot: 1/500 - 1/2000. ELISA: 1/10000. Not yet tested in other applications.
Concentration	1 mg/ml
Purity	≥90%
Storage Stability	-20°C/1 year
Synonyms	RSPO1; R-spondin-1; Roof plate-specific spondin-1; hRspo1
Observed Band	
Cell Pathway	Secreted . Nucleus . Seems to mainly localize to nucleoli .
Tissue Specificity	Abundantly expressed in adrenal glands, ovary, testis, thyroid and trachea but not in bone marrow, spinal cord, stomach, leukocytes colon, small intestine, prostate, thymus and spleen.
Function	disease:Defects in RSPO1 are the cause of palmoplantar keratoderma with squamous cell carcinoma of skin and sex reversal (PKKSCC) [MIM:610644]. This recessive syndrome is characterized by XX (female to male) SRY-independent sex reversal, palmoplantar hyperkeratosis and predisposition to squamous cell carcinoma of the skin..domain:The FU repeats are required for activation and stabilization of beta-catenin..function:Activator of the beta-catenin signaling cascade, leading to TCF-dependent gene activation. Acts both in the canonical Wnt/beta-catenin-dependent pathway, possibly via a direct interaction with Wnt proteins, and in a Wnt-independent beta catenin pathway through a receptor signaling pathway that may not use frizzled/LRP receptors. Acts as a ligand for frizzled FZD8 and LRP6. May negatively regulate the TGF-beta pathway. Has a

Nanjing BYabscience technology Co.,Ltd



essential roles in ovary determination.,miscellaneous

Background

This gene encodes a secreted activator protein with two cysteine-rich, furin-like domains and one thrombospondin type 1 domain. The encoded protein is a ligand for leucine-rich repeat-containing G-protein coupled receptors (LGR proteins) and positively regulates the Wnt signaling pathway. In mice, the protein induces the rapid onset of crypt cell proliferation and increases intestinal epithelial healing, providing a protective effect against chemotherapy-induced adverse effects. Alternative splicing results in multiple transcript variants. [provided by RefSeq, Apr 2014],

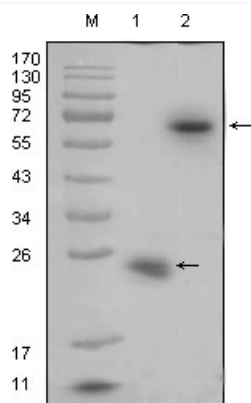
matters needing attention

Avoid repeated freezing and thawing!

Usage suggestions

This product can be used in immunological reaction related experiments. For more information, please consult technical personnel.

Products Images



Western Blot analysis using R-Spondin Monoclonal Antibody against recombinant R-spondin1 protein (1) and R-spondin1(aa21-263)-hlgGfc transfected HEK293 cell lysate(2).

Nanjing BYabscience technology Co.,Ltd

网址: www.njbybio.com

官方热线: 025-5229-8998

监督电话: 15950492658