



# Cyclin B1 Monoclonal Antibody

<b>Catalog No</b>	BYab-16554
<b>Isotype</b>	IgG
<b>Reactivity</b>	Human;Rat
<b>Applications</b>	WB;IP;IF;FCM;ELISA
<b>Gene Name</b>	CCNB1
<b>Protein Name</b>	G2/mitotic-specific cyclin-B1
<b>Immunogen</b>	Purified recombinant fragment of human Cyclin B1 expressed in E. Coli.
<b>Specificity</b>	Cyclin B1 Monoclonal Antibody detects endogenous levels of Cyclin B1 protein.
<b>Formulation</b>	Ascitic fluid containing 0.03% sodium azide,0.5% BSA, 50%glycerol.
<b>Source</b>	Monoclonal, Mouse
<b>Purification</b>	Affinity purification
<b>Dilution</b>	Western Blot: 1/500 - 1/2000. Immunofluorescence: 1/200 - 1/1000. Flow cytometry: 1/200 - 1/400. ELISA: 1/10000. Not yet tested in other applications.
<b>Concentration</b>	1 mg/ml
<b>Purity</b>	≥90%
<b>Storage Stability</b>	-20°C/1 year
<b>Synonyms</b>	CCNB1; CCNB; G2/mitotic-specific cyclin-B1
<b>Observed Band</b>	
<b>Cell Pathway</b>	Cytoplasm. Nucleus. Cytoplasm, cytoskeleton, microtubule organizing center, centrosome.
<b>Tissue Specificity</b>	Breast adenocarcinoma,Lung,Placenta,
<b>Function</b>	developmental stage:Accumulates steadily during G2 and is abruptly destroyed at mitosis.,function:Essential for the control of the cell cycle at the G2/M (mitosis) transition.,PTM:Ubiquitinated by the SCF(NIPA) complex during interphase, leading to its destruction. Not ubiquitinated during G2/M phases.,similarity:Belongs to the cyclin family.,similarity:Belongs to the cyclin family. Cyclin AB subfamily.,subunit:Interacts with the CDC2 protein kinase to form a serine/threonine kinase holoenzyme complex also known as maturation promoting factor (MPF). The cyclin subunit imparts substrate specificity to the complex. Binds HEI10. Interacts with catalytically active RALBP1 and CDC2 during mitosis to form an endocytotic complex during interphase.,
<b>Background</b>	The protein encoded by this gene is a regulatory protein involved in mitosis. The gene product complexes with p34(cdc2) to form the maturation-promoting factor

**Nanjing BYabscience technology Co.,Ltd**



(MPF). Two alternative transcripts have been found, a constitutively expressed transcript and a cell cycle-regulated transcript, that is expressed predominantly during G2/M phase. The different transcripts result from the use of alternate transcription initiation sites. [provided by RefSeq, Jul 2008],

**matters needing attention**

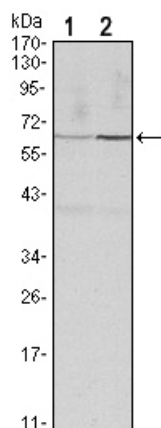
Avoid repeated freezing and thawing!

**Usage suggestions**

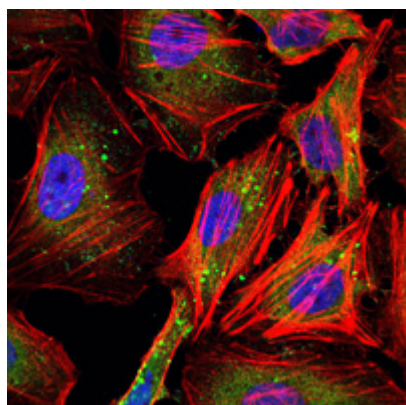
This product can be used in immunological reaction related experiments. For more information, please consult technical personnel.



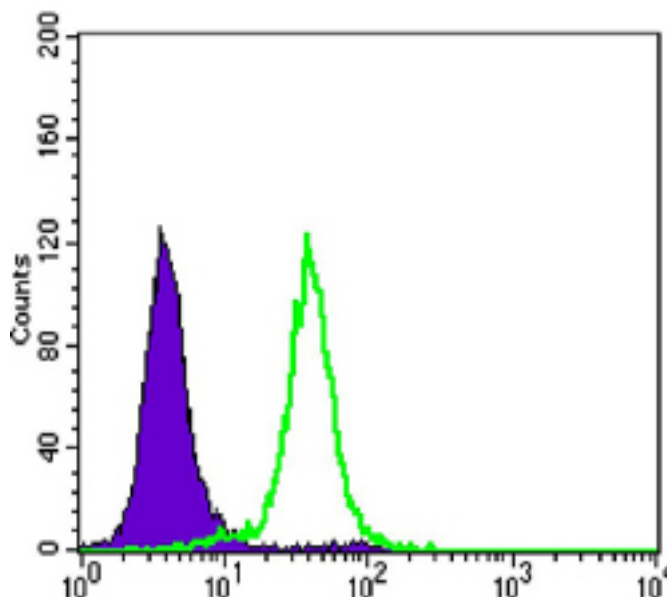
## Products Images



Western Blot analysis using Cyclin B1 Monoclonal Antibody against HeLa (1) and PC-12 (2) cell lysate.



Immunofluorescence analysis of HeLa cells using Cyclin B1 Monoclonal Antibody (green). Blue: DRAQ5 fluorescent DNA dye. Red: Actin filaments have been labeled with Alexa Fluor-555 phalloidin.



Flow cytometric analysis of HeLa cells using Cyclin B1 Monoclonal Antibody (green) and negative control (purple).

**Nanjing BYabscience technology Co.,Ltd**

网址: [www.njbybio.com](http://www.njbybio.com)

官方热线: 025-5229-8998

监督电话: 15950492658