



CDC25C Monoclonal Antibody

| | |
|--------------------|---|
| Catalog No | BYab-16546 |
| Isotype | IgG |
| Reactivity | Human |
| Applications | WB;IHC;IF;ELISA |
| Gene Name | CDC25C |
| Protein Name | M-phase inducer phosphatase 3 |
| Immunogen | Purified recombinant fragment of human CDC25C expressed in E. Coli. |
| Specificity | CDC25C Monoclonal Antibody detects endogenous levels of CDC25C protein. |
| Formulation | Ascitic fluid containing 0.03% sodium azide,0.5% BSA, 50%glycerol. |
| Source | Monoclonal, Mouse |
| Purification | Affinity purification |
| Dilution | WB: 1/500 - 1/2000. IHC: 1/200 - 1/1000. ELISA: 1/10000.. IF 1:50-200 |
| Concentration | 1 mg/ml |
| Purity | ≥90% |
| Storage Stability | -20°C/1 year |
| Synonyms | CDC25C; M-phase inducer phosphatase 3; Dual specificity phosphatase Cdc25C |
| Observed Band | |
| Cell Pathway | Nucleus . |
| Tissue Specificity | Colon carcinoma,Epithelium,Skin,Testis, |
| Function | catalytic activity:Protein tyrosine phosphate + H(2)O = protein tyrosine + phosphate.,developmental stage:Expressed predominantly in G2 phase.,function:Functions as a dosage-dependent inducer in mitotic control. It is a tyrosine protein phosphatase required for progression of the cell cycle. It directly dephosphorylates CDC2 and activate its kinase activity.,PTM:Phosphorylated by CHK1 on Ser-216. This phosphorylation creates a binding site for 14-3-3 protein and inhibits the phosphatase.,similarity:Belongs to the MPI phosphatase family.,similarity:Contains 1 rhodanese domain.,subunit:Interacts with HIV-1 Vpr, thereby inactivating CDC25C phosphatase activity., |
| Background | cell division cycle 25C(CDC25C) Homo sapiens This gene encodes a conserved protein that plays a key role in the regulation of cell division. The encoded protein directs dephosphorylation of cyclin B-bound CDC2 and triggers |

Nanjing BYabscience technology Co.,Ltd



entry into mitosis. It also suppresses p53-induced growth arrest. Multiple alternatively spliced transcript variants of this gene have been described. [provided by RefSeq, Dec 2015],

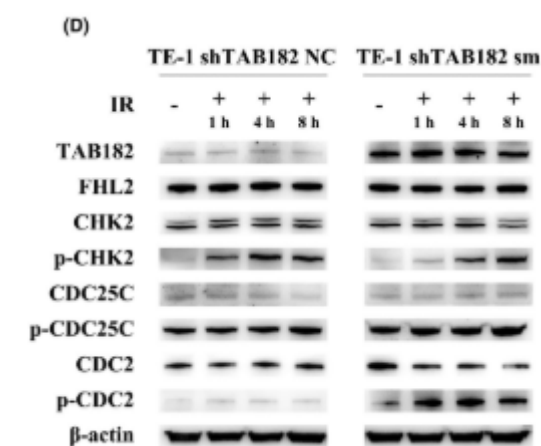
matters needing attention

Avoid repeated freezing and thawing!

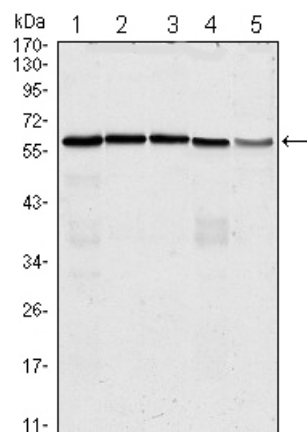
Usage suggestions

This product can be used in immunological reaction related experiments. For more information, please consult technical personnel.

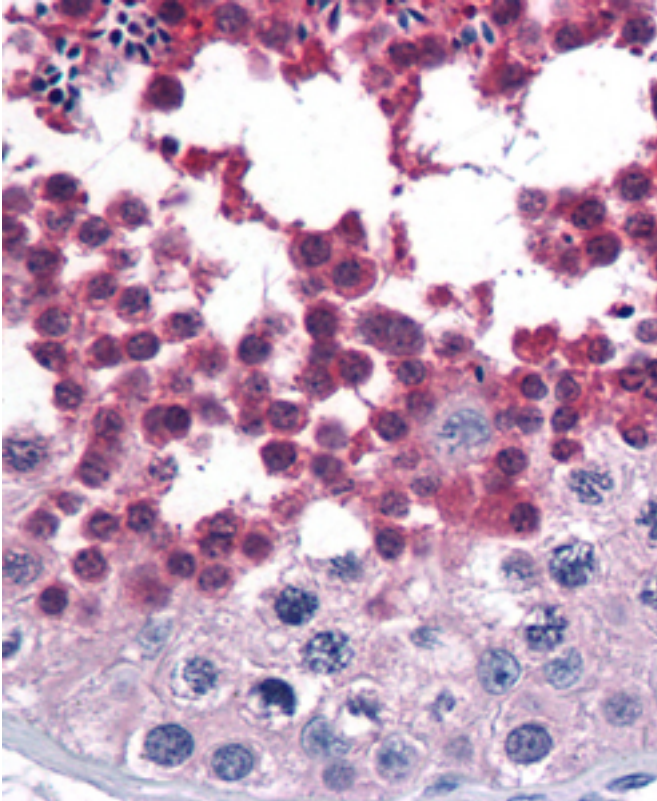
Products Images



Cao, Yuandong, et al. "Elevated TAB182 enhances the radioresistance of esophageal squamous cell carcinoma through G2-M checkpoint modulation." *Cancer Medicine* 10.9 (2021): 3101-3112.



Western Blot analysis using CDC25C Monoclonal Antibody against HeLa (1), K562 (2), PC-3 (3), HEK293 (4) and Raw264.7 (5) cell lysate.



Immunohistochemistry analysis of paraffin-embedded human Testis tissues with AEC staining using CDC25C Monoclonal Antibody.