



# Syntenin-1 Monoclonal Antibody

<b>Catalog No</b>	BYab-16272
<b>Isotype</b>	IgG
<b>Reactivity</b>	Human;Rat;Dog;Pig
<b>Applications</b>	WB
<b>Gene Name</b>	SDCBP
<b>Protein Name</b>	Syntenin-1
<b>Immunogen</b>	Purified recombinant human Syntenin-1 protein fragments expressed in E.coli.
<b>Specificity</b>	Syntenin-1 Monoclonal Antibody detects endogenous levels of Syntenin-1 protein.
<b>Formulation</b>	Purified mouse monoclonal in buffer containing 0.1M Tris-Glycine (pH 7.4, 150 mM NaCl) with 0.2% sodium azide, 50% glycerol.
<b>Source</b>	Monoclonal, Mouse
<b>Purification</b>	Affinity purification
<b>Dilution</b>	Western Blot: 1/1000 - 1/2000. Not yet tested in other applications.
<b>Concentration</b>	1 mg/ml
<b>Purity</b>	≥90%
<b>Storage Stability</b>	-20°C/1 year
<b>Synonyms</b>	SDCBP; MDA9; SYCL; Syntenin-1; Melanoma differentiation-associated protein 9; MDA-9; Pro-TGF-alpha cytoplasmic domain-interacting protein 18; TACIP18; Scaffold protein Pbp1; Syndecan-binding protein 1
<b>Observed Band</b>	
<b>Cell Pathway</b>	Cell junction, focal adhesion . Cell junction, adherens junction . Cell membrane ; Peripheral membrane protein . Endoplasmic reticulum membrane ; Peripheral membrane protein . Nucleus . Melanosome . Cytoplasm, cytosol . Cytoplasm, cytoskeleton . Secreted, extracellular exosome . Membrane raft . Mainly membrane-associated. Localized to adherens junctions, focal adhesions and endoplasmic reticulum. Colocalized with actin stress fibers. Also found in the nucleus. Identified by mass spectrometry in melanosome fractions from stage I to stage IV. Associated to the plasma membrane in the presence of FZD7 and phosphatidylinositol 4,5-bisphosphate (PIP2) (PubMed:27386966).
<b>Tissue Specificity</b>	Expressed in lung cancers, including adenocarcinoma, squamous cell carcinoma and small-cell carcinoma (at protein level) (PubMed:25893292). Widely expressed. Expressed in fetal kidney, liver, lung and brain. In adult highest expression in heart and placenta.

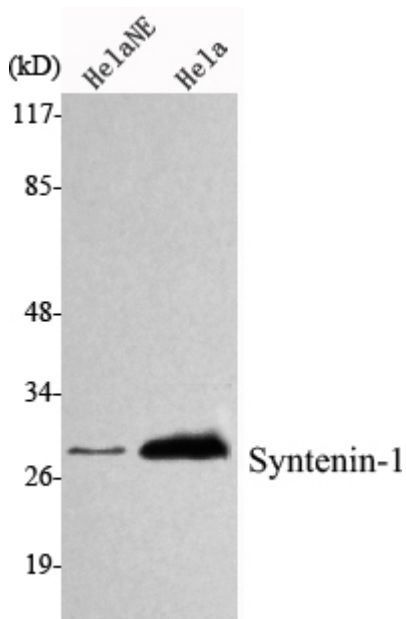
**Nanjing BYabscience technology Co.,Ltd**



<b>Function</b>	<p>function: Seems to function as an adapter protein. In adherens junctions may function to couple syndecans to cytoskeletal proteins or signaling components. Seems to couple transcription factor SOX4 to the IL-5 receptor (IL5RA). May also play a role in vesicular trafficking. Seems to be required for the targeting of TGFA to the cell surface in the early secretory pathway., induction: By gamma interferon in melanoma cells., PTM: Phosphorylated on tyrosine residues., similarity: Contains 2 PDZ (DHR) domains., subcellular location: Mainly membrane-associated. Localized to adherens junctions, focal adhesions and endoplasmic reticulum. Colocalized with actin stress fibers. Also found in the nucleus. Identified by mass spectrometry in melanosome fractions from stage I to stage IV., subunit: Monomer and homodimer (By similarity). Interacts with SDC1, SDC2, SDC3, SDC4, NRXN2, EPHA7, EPHB1, NF2 isoform 1, TG</p>
<b>Background</b>	<p>syndecan binding protein(SDCBP) Homo sapiens The protein encoded by this gene was initially identified as a molecule linking syndecan-mediated signaling to the cytoskeleton. The syntenin protein contains tandemly repeated PDZ domains that bind the cytoplasmic, C-terminal domains of a variety of transmembrane proteins. This protein may also affect cytoskeletal-membrane organization, cell adhesion, protein trafficking, and the activation of transcription factors. The protein is primarily localized to membrane-associated adherens junctions and focal adhesions but is also found at the endoplasmic reticulum and nucleus. Alternative splicing results in multiple transcript variants encoding different isoforms. [provided by RefSeq, Jul 2008],</p>
<b>matters needing attention</b>	<p>Avoid repeated freezing and thawing!</p>
<b>Usage suggestions</b>	<p>This product can be used in immunological reaction related experiments. For more information, please consult technical personnel.</p>



## Products Images



Western Blot analysis using Syntenin-1 Monoclonal Antibody against HeLa nuclear extract, HeLa cell lysate.