



Rab 10 Monoclonal Antibody

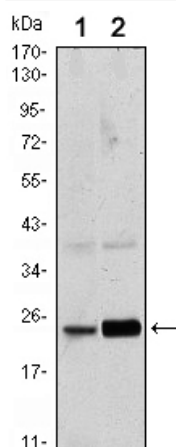
Catalog No	BYab-16101
Isotype	IgG
Reactivity	Human;Mouse
Applications	WB;IF;ELISA
Gene Name	RAB10
Protein Name	Ras-related protein Rab-10
Immunogen	Purified recombinant fragment of human Rab 10 expressed in E. Coli.
Specificity	Rab 10 Monoclonal Antibody detects endogenous levels of Rab 10 protein.
Formulation	Ascitic fluid containing 0.03% sodium azide,0.5% BSA, 50%glycerol.
Source	Monoclonal, Mouse
Purification	Affinity purification
Dilution	Western Blot: 1/500 - 1/2000. Immunofluorescence: 1/200 - 1/1000. ELISA: 1/10000. Not yet tested in other applications.
Concentration	1 mg/ml
Purity	≥90%
Storage Stability	-20°C/1 year
Synonyms	RAB10; Ras-related protein Rab-10
Observed Band	
Cell Pathway	Cytoplasmic vesicle membrane ; Lipid-anchor ; Cytoplasmic side . Golgi apparatus membrane . Golgi apparatus, trans-Golgi network membrane . Endosome membrane . Recycling endosome membrane . Cytoplasmic vesicle, phagosome membrane . Cytoplasm, cytoskeleton, cilium basal body . Endoplasmic reticulum membrane . Cytoplasm, perinuclear region . Associates with SLC2A4/GLUT4 storage vesicles (PubMed:22908308). Localizes to the base of the cilium when phosphorylated by LRRK2 on Thr-73 (PubMed:20576682, PubMed:30398148). Transiently associates with phagosomes (By similarity). Localizes to the endoplasmic reticulum at domains of new tubule growth (PubMed:23263280). .
Tissue Specificity	Expressed in the hippocampus (PubMed:29562525). Expressed in neutrophils (at protein level) (PubMed:29127255). Expressed in the testis (at protein level) (PubMed:28067790).
Function	function:May be involved in vesicular trafficking and neurotransmitter release.,similarity:Belongs to the small GTPase superfamily. Rab family.,

Nanjing BYabscience technology Co.,Ltd

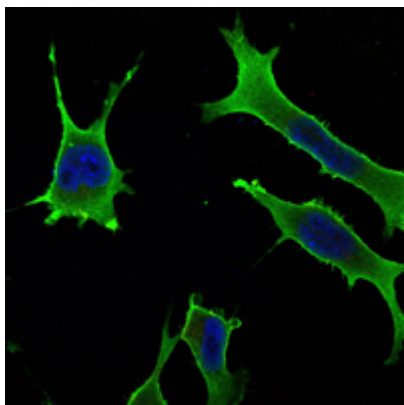


Background	RAB10 belongs to the RAS (see HRAS; MIM 190020) superfamily of small GTPases. RAB proteins localize to exocytic and endocytic compartments and regulate intracellular vesicle trafficking (Bao et al., 1998 [PubMed 9918381]).[supplied by OMIM, Mar 2009],
matters needing attention	Avoid repeated freezing and thawing!
Usage suggestions	This product can be used in immunological reaction related experiments. For more information, please consult technical personnel.

Products Images



Western Blot analysis using Rab 10 Monoclonal Antibody against HeLa (1) and NIH/3T3 (2) cell lysate.



Immunofluorescence analysis of LOVO cells using Rab 10 Monoclonal Antibody (green). Blue: DRAQ5 fluorescent DNA dye.