



TNF- α Monoclonal Antibody(Q34)

Catalog No	BYab-15859
Isotype	IgG
Reactivity	Human;Rat;Mouse
Applications	WB;IHC;IF
Gene Name	TNF TNFA TNFSF2
Protein Name	Tumor necrosis factor (Cachectin) (TNF-alpha) (Tumor necrosis factor ligand superfamily member 2) (TNF-a) [Cleaved into: Tumor necrosis factor, membrane form (N-terminal fragment) (NTF); Intracellular
Immunogen	Synthetic Peptide of TNF α
Specificity	The antibody detects endogenous TNF α protein
Formulation	Liquid in PBS containing 50% glycerol, 0.5% BSA and 0.02% sodium azide.
Source	Monoclonal, Mouse
Purification	The antibody was affinity-purified from mouse ascites by affinity-chromatography using epitope-specific immunogen.
Dilution	WB: 1:1000-1:3000 IHC: 1:50-1:200. IF 1:50-200
Concentration	1 mg/ml
Purity	$\geq 90\%$
Storage Stability	-20°C/1 year
Synonyms	Tumor necrosis factor (Cachectin;TNF-alpha;Tumor necrosis factor ligand superfamily member 2;TNF-a) [Cleaved into: Tumor necrosis factor, membrane form (N-terminal fragment;NTF); Intracellular domain 1 (ICD1); Intracellular domain 2 (ICD2); C-domain 1; C-domain 2; Tumor necrosis factor, soluble form]
Observed Band	17,25kD
Cell Pathway	Cell membrane ; Single-pass type II membrane protein .; [Tumor necrosis factor, membrane form]: Membrane; Single-pass type II membrane protein.; [Tumor necrosis factor, soluble form]: Secreted .; [C-domain 1]: Secreted.; [C-domain 2]: Secreted.
Tissue Specificity	Blood,Peripheral blood leukocyte,Placenta,Prostatic carcinoma,
Function	disease:Cachexia accompanies a variety of diseases, including cancer and infection, and is characterized by general ill health and malnutrition..disease:Genetic variations in TNF are associated with susceptibility to hepatitis B virus infection (HBV infection) [MIM:610424]. Approximately one third of all cases of cirrhosis and half of all cases of hepatocellular carcinoma can

Nanjing BYabs science technology Co.,Ltd



be attributed to chronic HBV infection. HBV infection may result in subclinical or asymptomatic infection, acute self-limited hepatitis, or fulminant hepatitis requiring liver transplantation. Genetic variations in TNF are associated with susceptibility to psoriatic arthritis [MIM:607507]. Psoriasis is a chronic inflammatory dermatosis that affects approximately 2% of the population. It is characterized by red, scaly skin lesions that are usually found on the scalp, elbows, and knees, and may be associated w

Background

This gene encodes a multifunctional proinflammatory cytokine that belongs to the tumor necrosis factor (TNF) superfamily. This cytokine is mainly secreted by macrophages. It can bind to, and thus functions through its receptors TNFRSF1A/TNFR1 and TNFRSF1B/TNFR. This cytokine is involved in the regulation of a wide spectrum of biological processes including cell proliferation, differentiation, apoptosis, lipid metabolism, and coagulation. This cytokine has been implicated in a variety of diseases, including autoimmune diseases, insulin resistance, and cancer. Knockout studies in mice also suggested the neuroprotective function of this cytokine. [provided by RefSeq, Jul 2008],

matters needing attention

Avoid repeated freezing and thawing!

Usage suggestions

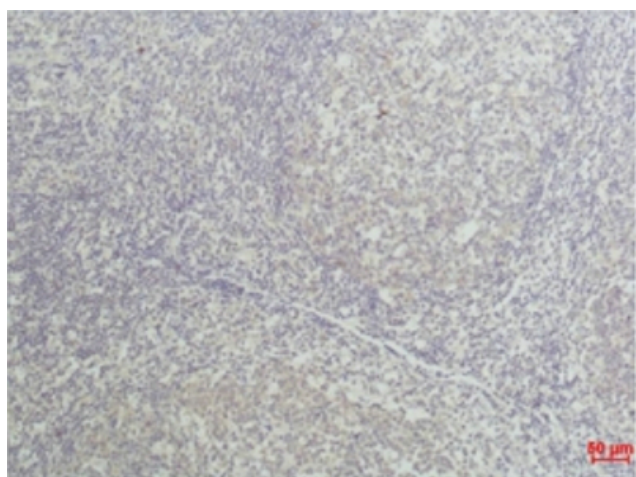
This product can be used in immunological reaction related experiments. For more information, please consult technical personnel.



Products Images



Western blot analysis of Recombinant Human TNF α Protein with TNF α Mouse mAb at 1:2,000.



Immunohistochemical analysis of paraffin-embedded Human Tonsil Tissue using TNF α Mouse mAb diluted at 1:50

The picture was kindly provided by our customer

mouse BV2



TNF α

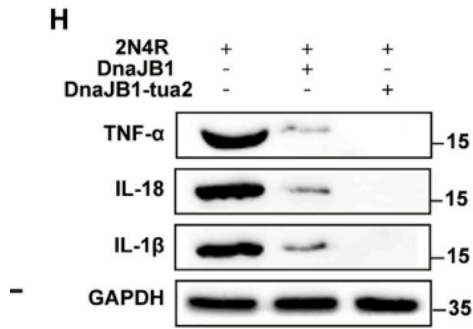
Huazhong University of Science and Technology (HUST)

Nanjing BYabs science technology Co.,Ltd

网址: www.njbybio.com

官方热线: 025-5229-8998

监督电话: 15950492658



A novel gene therapy for methamphetamine- induced cognitive disorder with a hyper-acidified fusion variant of DnaJB1 Molecular Therapy-Nucleic Acids
Mengru Zhang, Cheng Chen, Qingyan Peng, Xiaocong Wu, Ruiyi Zhou, Yuru Ma, Zhurong Zou WB Mouse hippocampus BV2 cell