



MCP-1 Monoclonal Antibody

Catalog No	BYab-15848
Isotype	IgG
Reactivity	Human
Applications	WB;ELISA
Gene Name	CCL2
Protein Name	C-C motif chemokine 2
Immunogen	Purified recombinant fragment of human MCP-1 expressed in E. Coli.
Specificity	MCP-1 Monoclonal Antibody detects endogenous levels of MCP-1 protein.
Formulation	Purified antibody in PBS containing 0.03% sodium azide.
Source	Monoclonal, Mouse
Purification	Affinity purification
Dilution	Western Blot: 1/500 - 1/2000. ELISA: 1/10000. Not yet tested in other applications.
Concentration	1 mg/ml
Purity	≥90%
Storage Stability	-20°C/1 year
Synonyms	CCL2; MCP1; SCYA2; C-C motif chemokine 2; HC11; Monocyte chemoattractant protein 1; Monocyte chemotactic and activating factor; MCAF; Monocyte chemotactic protein 1; MCP-1; Monocyte secretory protein JE; Small-inducible cytokine A2
Observed Band	
Cell Pathway	Secreted .
Tissue Specificity	Expressed in the seminal plasma, endometrial fluid and follicular fluid (at protein level) (PubMed:23765988). Expressed in monocytes (PubMed:2513477).
Function	function:Chemotactic factor that attracts monocytes and basophils but not neutrophils or eosinophils. Augments monocyte anti-tumor activity. Has been implicated in the pathogenesis of diseases characterized by monocytic infiltrates, like psoriasis, rheumatoid arthritis or atherosclerosis. May be involved in the recruitment of monocytes into the arterial wall during the disease process of atherosclerosis.,online information:CCL2 entry.polymorphism:Genetic variations in CCL2 determine Mycobacterium tuberculosis susceptibility [MIM:607948].,PTM:Processing at the N-terminus can regulate receptor and target cell selectivity. Deletion of the N-terminal residue converts it from an

Nanjing BYabscience technology Co.,Ltd



activator of basophil to an eosinophil chemoattractant.,similarity:Belongs to the intercrine beta (chemokine CC) family.,subunit:Monomer or homodimer; in equilibrium. Binds to CCR2 and CCR4. Is tethered on endothelial

Background

This gene is one of several cytokine genes clustered on the q-arm of chromosome 17. Chemokines are a superfamily of secreted proteins involved in immunoregulatory and inflammatory processes. The superfamily is divided into four subfamilies based on the arrangement of N-terminal cysteine residues of the mature peptide. This chemokine is a member of the CC subfamily which is characterized by two adjacent cysteine residues. This cytokine displays chemotactic activity for monocytes and basophils but not for neutrophils or eosinophils. It has been implicated in the pathogenesis of diseases characterized by monocytic infiltrates, like psoriasis, rheumatoid arthritis and atherosclerosis. It binds to chemokine receptors CCR2 and CCR4. [provided by RefSeq, Jul 2013],

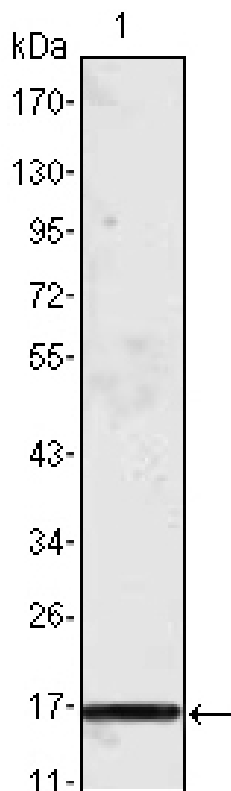
matters needing attention

Avoid repeated freezing and thawing!

Usage suggestions

This product can be used in immunological reaction related experiments. For more information, please consult technical personnel.

Products Images



Western Blot analysis using MCP-1 Monoclonal Antibody against truncated MCP-1 recombinant protein.

Nanjing BYabs science technology Co.,Ltd

网址: www.njbybio.com

官方热线: 025-5229-8998

监督电话: 15950492658