



# IL-11 Monoclonal Antibody

<b>Catalog No</b>	BYab-15839
<b>Isotype</b>	IgG
<b>Reactivity</b>	Human
<b>Applications</b>	WB;ELISA
<b>Gene Name</b>	IL11
<b>Protein Name</b>	Interleukin-11
<b>Immunogen</b>	Purified recombinant fragment of human IL-11 expressed in E. Coli.
<b>Specificity</b>	IL-11 Monoclonal Antibody detects endogenous levels of IL-11 protein.
<b>Formulation</b>	Purified antibody in PBS containing 0.03% sodium azide.
<b>Source</b>	Monoclonal, Mouse
<b>Purification</b>	Affinity purification
<b>Dilution</b>	Western Blot: 1/500 - 1/2000. ELISA: 1/10000. Not yet tested in other applications.
<b>Concentration</b>	1 mg/ml
<b>Purity</b>	≥90%
<b>Storage Stability</b>	-20°C/1 year
<b>Synonyms</b>	IL11; Interleukin-11; IL-11; Adipogenesis inhibitory factor; AGIF; Oprelvekin
<b>Observed Band</b>	
<b>Cell Pathway</b>	Secreted .
<b>Tissue Specificity</b>	Bone marrow,Prostate,
<b>Function</b>	function:Directly stimulates the proliferation of hematopoietic stem cells and megakaryocyte progenitor cells and induces megakaryocyte maturation resulting in increased platelet production.,online information:Clinical information on Neumega,online information:Interleukin-11 entry,pharmaceutical:Available under the name Neumega (Wyeth). Used for the prevention of severe thrombocytopenia and the reduction of the need for platelet transfusion following myelosuppressive chemotherapy.,similarity:Belongs to the IL-6 superfamily.,
<b>Background</b>	The protein encoded by this gene is a member of the gp130 family of cytokines. These cytokines drive the assembly of multisubunit receptor complexes, all of which contain at least one molecule of the transmembrane signaling receptor IL6ST (gp130). This cytokine is shown to stimulate the T-cell-dependent development of immunoglobulin-producing B cells. It is also found to support the

**Nanjing BYabscience technology Co.,Ltd**



proliferation of hematopoietic stem cells and megakaryocyte progenitor cells. Alternatively spliced transcript variants encoding distinct isoforms have been found for this gene. [provided by RefSeq, Jun 2012],

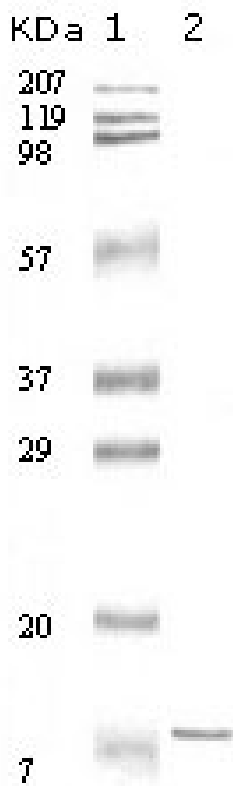
**matters needing attention**

Avoid repeated freezing and thawing!

**Usage suggestions**

This product can be used in immunological reaction related experiments. For more information, please consult technical personnel.

## Products Images



Western Blot analysis using IL-11 Monoclonal Antibody against truncated IL-11 recombinant protein.