



BNP Monoclonal Antibody

Catalog No	BYab-15825
Isotype	IgG
Reactivity	Human
Applications	IHC;IF;ELISA
Gene Name	NPPB
Protein Name	Natriuretic peptides B
Immunogen	Synthetic peptide corresponding to aa (Cys-Phe-Gly-Arg-Lys-Met-Asp-Arg-Ile-Ser-Ser-Ser-Ser) of human BNP, conjugated to KLH.
Specificity	BNP Monoclonal Antibody detects endogenous levels of BNP protein.
Formulation	Ascitic fluid containing 0.03% sodium azide,0.5% BSA, 50%glycerol.
Source	Monoclonal, Mouse
Purification	Affinity purification
Dilution	IHC: 1/200 - 1/1000. ELISA: 1/10000.. IF 1:50-200
Concentration	1 mg/ml
Purity	≥90%
Storage Stability	-20°C/1 year
Synonyms	NPPB; Natriuretic peptides B; Gamma-brain natriuretic peptide
Observed Band	
Cell Pathway	[NT-proBNP]: Secreted . Detected in blood. .; [proBNP(3-108)]: Secreted . Detected in blood. .; [Brain natriuretic peptide 32]: Secreted . Detected in blood. .; [BNP(3-32)]: Secreted . Detected in blood. .
Tissue Specificity	[Brain natriuretic peptide 32]: Detected in the cardiac atria (at protein level) (PubMed:2138890, PubMed:2136732). Detected in the kidney distal tubular cells (at protein level) (PubMed:9794555).
Function	function:Acts as a cardiac hormone with a variety of biological actions including natriuresis, diuresis, vasorelaxation, and inhibition of renin and aldosterone secretion. It is thought to play a key role in cardiovascular homeostasis. Helps restore the body's salt and water balance. Improves heart function.,online information:Brain natriuretic peptide entry,pharmaceutical:Available under the name Nesiritide (Scios). Used for the treatment of heart failure.,similarity:Belongs to the natriuretic peptide family.,subunit:Interacts with NPR3.,tissue specificity:Brain and also in atria, but at much lower levels than ANP.,

Nanjing BYabs science technology Co.,Ltd



Background

This gene is a member of the natriuretic peptide family and encodes a secreted protein which functions as a cardiac hormone. The protein undergoes two cleavage events, one within the cell and a second after secretion into the blood. The protein's biological actions include natriuresis, diuresis, vasorelaxation, inhibition of renin and aldosterone secretion, and a key role in cardiovascular homeostasis. A high concentration of this protein in the bloodstream is indicative of heart failure. The protein also acts as an antimicrobial peptide with antibacterial and antifungal activity. Mutations in this gene have been associated with postmenopausal osteoporosis. [provided by RefSeq, Nov 2014],

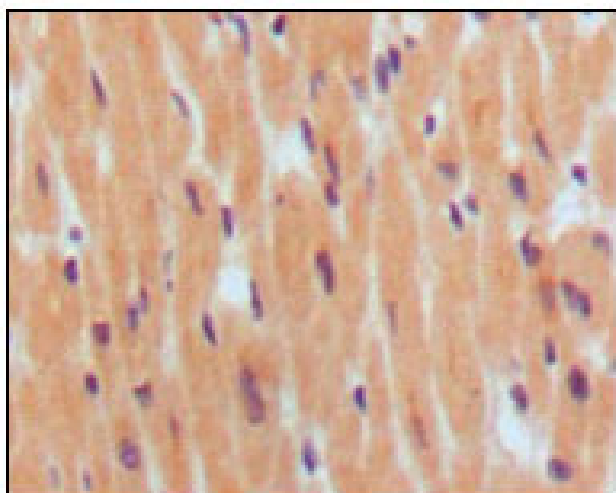
matters needing attention

Avoid repeated freezing and thawing!

Usage suggestions

This product can be used in immunological reaction related experiments. For more information, please consult technical personnel.

Products Images



Immunohistochemistry analysis of paraffin-embedded human normal myocardium, showing cytoplasmic localization with DAB staining using BNP Monoclonal Antibody.