



Brn-3a Polyclonal Antibody

Catalog No	BYab-15749
Isotype	IgG
Reactivity	Human;Mouse;Rat
Applications	WB;ELISA
Gene Name	POU4F1
Protein Name	POU domain class 4 transcription factor 1
Immunogen	The antiserum was produced against synthesized peptide derived from human POU4F1. AA range:311-360
Specificity	Brn-3a Polyclonal Antibody detects endogenous levels of Brn-3a protein.
Formulation	Liquid in PBS containing 50% glycerol, 0.5% BSA and 0.02% sodium azide.
Source	Polyclonal, Rabbit,IgG
Purification	The antibody was affinity-purified from rabbit antiserum by affinity-chromatography using epitope-specific immunogen.
Dilution	Western Blot: 1/500 - 1/2000. ELISA: 1/5000. Not yet tested in other applications.
Concentration	1 mg/ml
Purity	≥90%
Storage Stability	-20°C/1 year
Synonyms	POU4F1; BRN3A; RDC1; POU domain; class 4, transcription factor 1; Brain-specific homeobox/POU domain protein 3A; Brain-3A; Brn-3A; Homeobox/POU domain protein RDC-1; Oct-T1
Observed Band	42kD
Cell Pathway	Nucleus . Cytoplasm .
Tissue Specificity	Expressed in the brain and the retina. Present in the developing brain, spinal cord and eye.
Function	developmental stage:Expression peaks early in embryogenesis (day 13.5) and is undetectable 14 days after birth.,function:Probable transcription factor which may play a role in the regulation of specific gene expression within a subset of neuronal lineages. May play a role in determining or maintaining the identities of a small subset of visual system neurons.,similarity:Belongs to the POU transcription factor family. Class-4 subfamily.,similarity:Contains 1 homeobox DNA-binding domain.,similarity:Contains 1 POU-specific domain.,tissue specificity:Brain. Seems to be specific to the retina. Present in the developing brain, spinal cord and eye.,

Nanjing BYabscience technology Co.,Ltd



Background

This gene encodes a member of the POU-IV class of neural transcription factors. This protein is expressed in a subset of retinal ganglion cells and may be involved in the developing sensory nervous system. This protein may also promote the growth of cervical tumors. A translocation of this gene is associated with some adult acute myeloid leukemias. [provided by RefSeq, Mar 2012],

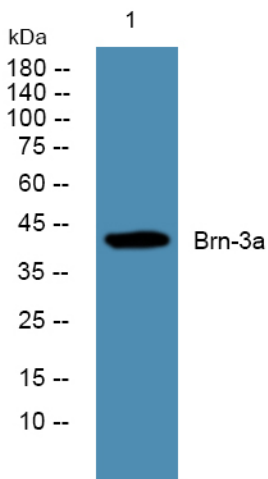
matters needing attention

Avoid repeated freezing and thawing!

Usage suggestions

This product can be used in immunological reaction related experiments. For more information, please consult technical personnel.

Products Images



Western blot analysis of lysates from SW480 cells, primary antibody was diluted at 1:1000, 4° over night