



# hCG $\beta$ (ABT184) Mouse mAb

Catalog No	BYab-15672
Isotype	IgG
Reactivity	Human
Applications	IHC
Gene Name	CGB3/CGB5/CGB8/CGB7/CGB1/CGB2
Protein Name	CG beta;CG-beta;CgB;CGB3;CGB3_HUMAN;CGB5;CGB7;CGB7_HUMAN;CGB8;C GHB_HUMAN;Choriogonadotropin subunit beta 3;Choriogonadotropin subunit beta 7;Choriogonadotropin subunit beta;Chorionic gonadotropin beta
Immunogen	Synthesized peptide derived from human hCG $\beta$
Specificity	The antibody can specifically recognize $\beta$ subunits of human CG, and has no cross reaction with LH, FSH or TSH proteins.
Formulation	PBS, pH7.2, 0.03% Porcolin 300, containing stabilizing protein
Source	Mouse, Monoclonal/IgG1, Kappa
Purification	The antibody was affinity-purified from mouse ascites by affinity-chromatography using specific immunogen.
Dilution	IHC-p 1:200-400,
Concentration	1 mg/ml
Purity	$\geq 90\%$
Storage Stability	-20°C/1 year
Synonyms	CG beta;CG-beta;CgB;CGB3;CGB3_HUMAN;CGB5;CGB7;CGB7_HUMAN;CGB8;C GHB_HUMAN;Choriogonadotropin subunit beta 3;Choriogonadotropin subunit beta 7;Choriogonadotropin subunit beta;Chorionic gonadotropin beta polypeptide;Chorionic gonadotropin chain beta
Observed Band	
Cell Pathway	Cytoplasmic
Tissue Specificity	Placenta
Function	
Background	

Nanjing BYabscience technology Co.,Ltd



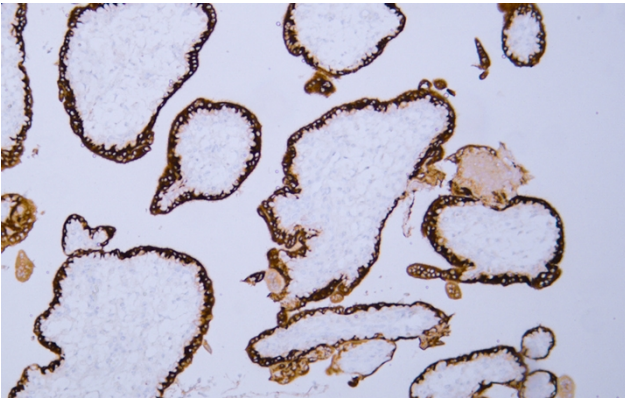
**matters needing attention**

Avoid repeated freezing and thawing!

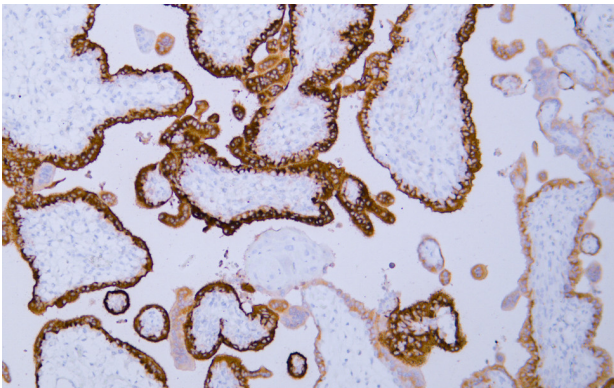
**Usage suggestions**

This product can be used in immunological reaction related experiments. For more information, please consult technical personnel.

**Products Images**



Human placenta tissue was stained with Anti-hCG  $\beta$  (ABT184) Antibody



Human placenta tissue was stained with Anti-hCG  $\beta$  (ABT184) Antibody