



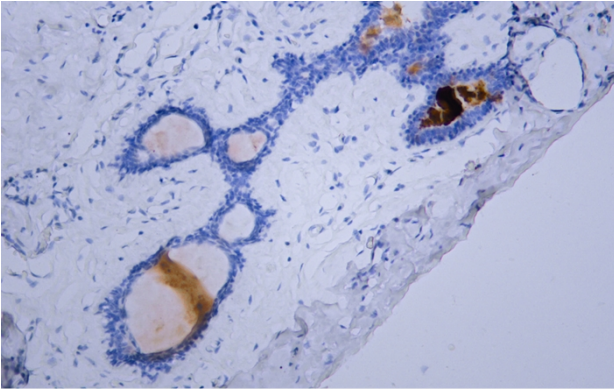
# Mammaglobin mouse mAb(ABT079)

<b>Catalog No</b>	BYab-15601
<b>Isotype</b>	IgG
<b>Reactivity</b>	Human
<b>Applications</b>	IHC;IF
<b>Gene Name</b>	SCGB2A2 MGB1 UGB2
<b>Protein Name</b>	Mammaglobin
<b>Immunogen</b>	Synthesized peptide derived from human Mammaglobin
<b>Specificity</b>	The antibody can specifically recognize human Mammaglobin protein.
<b>Formulation</b>	Liquid in PBS containing 50% glycerol, 0.5% BSA and 0.167% sodium azide.
<b>Source</b>	Mouse, Monoclonal/IgG1, Kappa
<b>Purification</b>	The antibody was affinity-purified from mouse ascites by affinity-chromatography using specific immunogen.
<b>Dilution</b>	IHC-p 1:100-500, IF 1:100-500
<b>Concentration</b>	1 mg/ml
<b>Purity</b>	≥90%
<b>Storage Stability</b>	-20°C/1 year
<b>Synonyms</b>	Mammaglobin-A (Mammaglobin-1;Secretoglobin family 2A member 2)
<b>Observed Band</b>	
<b>Cell Pathway</b>	Secreted .
<b>Tissue Specificity</b>	Mammary gland specific. Over-expressed in breast cancer.
<b>Function</b>	similarity:Belongs to the secretoglobin family. Lipophilin subfamily.,tissue specificity:Mammary gland specific. Over-expressed in breast cancer.,
<b>Background</b>	ERROR 42
<b>matters needing attention</b>	Avoid repeated freezing and thawing!
<b>Usage suggestions</b>	This product can be used in immunological reaction related experiments. For more information, please consult technical personnel.

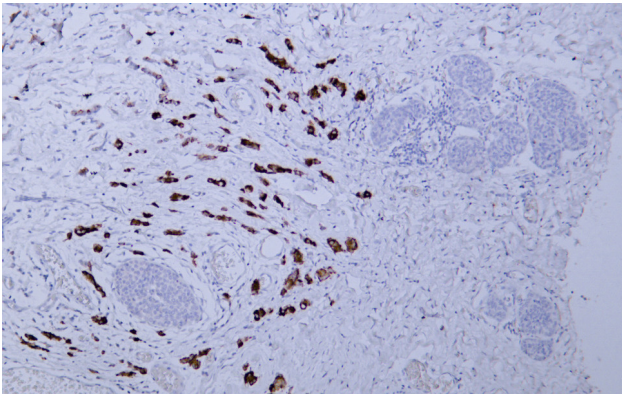
**Nanjing BYabscience technology Co.,Ltd**



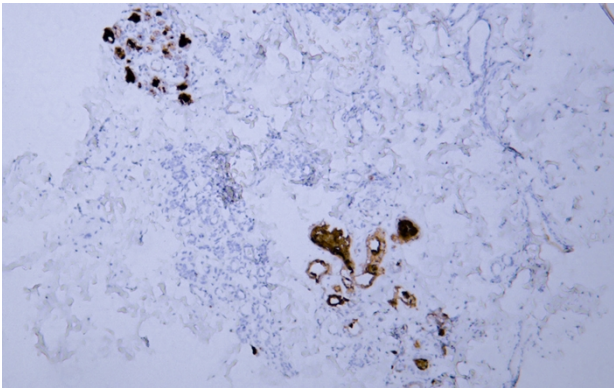
## Products Images



Human breast tissue was stained with  
Anti-Mammaglobin (ABT079) Antibody



Human breast carcinoma tissue was stained with  
Anti-Mammaglobin (ABT079) Antibody



Human breast tissue was stained with  
Anti-Mammaglobin (ABT079) Antibody