



Her-2 mouse mAb(ABT008)

Catalog No	BYab-15595
Isotype	IgG
Reactivity	Human; Predict react with Mouse, Rat
Applications	IHC;WB;IF
Gene Name	ERBB2 HER2 MLN19 NEU NGL
Protein Name	Her-2
Immunogen	Synthesized peptide derived from human Her-2
Specificity	The antibody can specifically recognize human Her-2 protein.
Formulation	Liquid in PBS containing 50% glycerol, 0.5% BSA and 0.41% sodium azide.
Source	Mouse, Monoclonal/IgG2a, kappa
Purification	The antibody was affinity-purified from mouse ascites by affinity-chromatography using specific immunogen.
Dilution	IHC-p 1:100-500, WB 1:200-1000, IF 1:100-500
Concentration	1 mg/ml
Purity	≥90%
Storage Stability	-20°C/1 year
Synonyms	Receptor tyrosine-protein kinase erbB-2 (EC 2.7.10.1;Metastatic lymph node gene 19 protein;MLN 19;Proto-oncogene Neu;Proto-oncogene c-ErbB-2;Tyrosine kinase-type cell surface receptor HER2;p185erbB2;CD antigen CD340)
Observed Band	
Cell Pathway	[Isoform 1]: Cell membrane ; Single-pass type I membrane protein. Early endosome . Cytoplasm, perinuclear region. Nucleus. Translocation to the nucleus requires endocytosis, probably endosomal sorting and is mediated by importin beta-1/KPNB1. Also detected in VPS35-positive endosome-to-TGN retrograde vesicles (PubMed:31138794). .; [Isoform 2]: Cytoplasm. Nucleus.; [Isoform 3]: Cytoplasm. Nucleus.
Tissue Specificity	Expressed in a variety of tumor tissues including primary breast tumors and tumors from small bowel, esophagus, kidney and mouth.
Function	catalytic activity:ATP + a [protein]-L-tyrosine = ADP + a [protein]-L-tyrosine phosphate.;disease:Defects in ERBB2 are associated with familial glioma of brain [MIM:137800]; also called glioblastoma multiforme. Gliomas are central nervous system neoplasms derived from glial cells and comprise astrocytomas, glioblastoma multiforme, oligodendrogliomas, and

Nanjing BYabscience technology Co.,Ltd



ependymomas.,disease:Defects in ERBB2 are associated with gastric cancer [MIM:137215]; also known as hereditary familial diffuse gastric cancer (HDGC).,disease:Defects in ERBB2 are associated with lung cancer [MIM:211980]; also called adenocarcinoma of lung.,disease:Defects in ERBB2 are associated with ovarian cancer [MIM:167000]. Ovarian cancer is the leading cause of death from gynecologic malignancy. It is characterized by advanced presentation with loco-regional dissemination in the peritoneal cavity and the rare incidence of viscera

Background

This gene encodes a member of the epidermal growth factor (EGF) receptor family of receptor tyrosine kinases. This protein has no ligand binding domain of its own and therefore cannot bind growth factors. However, it does bind tightly to other ligand-bound EGF receptor family members to form a heterodimer, stabilizing ligand binding and enhancing kinase-mediated activation of downstream signalling pathways, such as those involving mitogen-activated protein kinase and phosphatidylinositol-3 kinase. Allelic variations at amino acid positions 654 and 655 of isoform a (positions 624 and 625 of isoform b) have been reported, with the most common allele, Ile654/Ile655, shown here. Amplification and/or overexpression of this gene has been reported in numerous cancers, including breast and ovarian tumors. Alternative splicing results in several additional transcript variants, some encoding d

matters needing attention

Avoid repeated freezing and thawing!

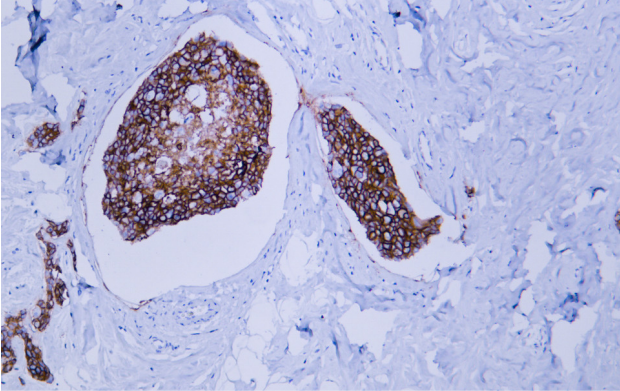
Usage suggestions

This product can be used in immunological reaction related experiments. For more information, please consult technical personnel.

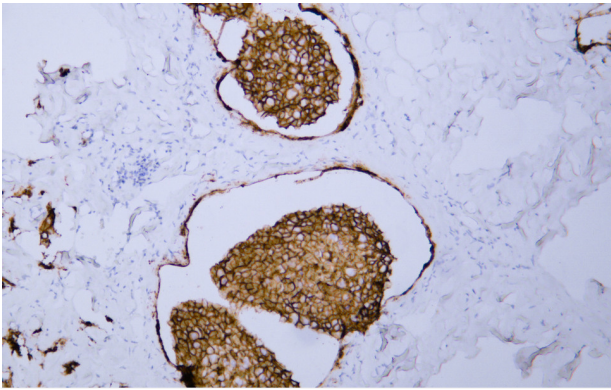
Nanjing BYabscience technology Co.,Ltd



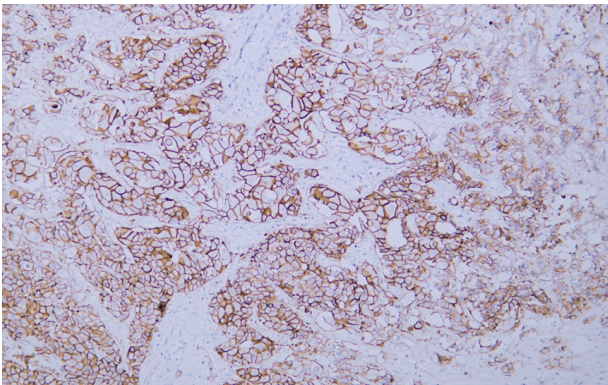
Products Images



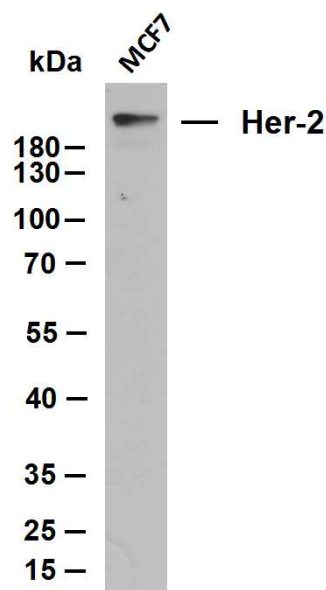
Human breast carcinoma tissue was stained with Anti-Her-2 (ABT008) Antibody



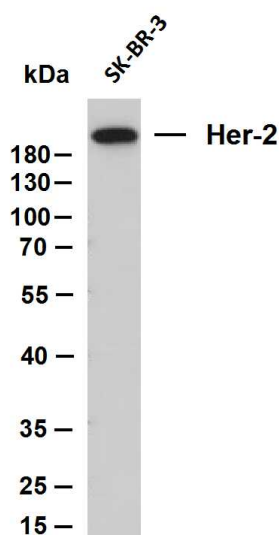
Human breast carcinoma tissue was stained with Anti-Her-2 (ABT008) Antibody



Human metastatic hepatocellular carcinoma of the breast tissue was stained with Anti-Her-2 (ABT008) Antibody



Whole cell lysates were separated by 10% SDS-PAGE, and the membrane was blotted with anti-Her-2(ABT088) antibody. The HRP-conjugated Goat anti-Mouse IgG(H + L) antibody was used to detect the antibody. Lane 1: MCF7 Predicted band size: 137kDa Observed band size: 200kDa



Whole cell lysates were separated by 10% SDS-PAGE, and the membrane was blotted with anti-Her-2(ABT088) antibody. The HRP-conjugated Goat anti-Mouse IgG(H + L) antibody was used to detect the antibody. Lane 1: SK-BR-3 Predicted band size: 137kDa Observed band size: 200kDa