



Gross cystic disease fluid protein-15 (GCDFP-15) mouse mAb(ABT330)

Catalog No	BYab-15592
Isotype	IgG
Reactivity	Human
Applications	IHC;WB;IF
Gene Name	PIP GCDFP15 GPIP4
Protein Name	Gross cystic disease fluid protein-15 (GCDFP-15)
Immunogen	Synthesized peptide derived from human Gross cystic disease fluid protein-15 (GCDFP-15)
Specificity	The antibody can specifically recognize human GCDFP-15 protein.
Formulation	Liquid in PBS containing 50% glycerol, 0.5% BSA and 0.87% sodium azide.
Source	Mouse, Monoclonal/IgG1, Kappa
Purification	The antibody was affinity-purified from mouse ascites by affinity-chromatography using specific immunogen.
Dilution	IHC-p 1:100-500, WB 1:200-1000, IF 1:100-500
Concentration	1 mg/ml
Purity	≥90%
Storage Stability	-20°C/1 year
Synonyms	Prolactin-inducible protein (Gross cystic disease fluid protein 15;GCDFP-15;Prolactin-induced protein;Secretory actin-binding protein;SABP;gp17)
Observed Band	
Cell Pathway	Secreted.
Tissue Specificity	Expressed in pathological conditions of the mammary gland and in several exocrine tissues, such as the lacrimal, salivary, and sweat glands.
Function	induction:By prolactin and androgen; inhibited by estrogen.,similarity:Belongs to the PIP family.,subunit:Monomer. Interacts with AZGP1.,tissue specificity:Expressed in pathological conditions of the mammary gland and in several exocrine tissues, such as the lacrimal, salivary, and sweat glands.,
Background	ERROR 42

Nanjing BYabscience technology Co.,Ltd



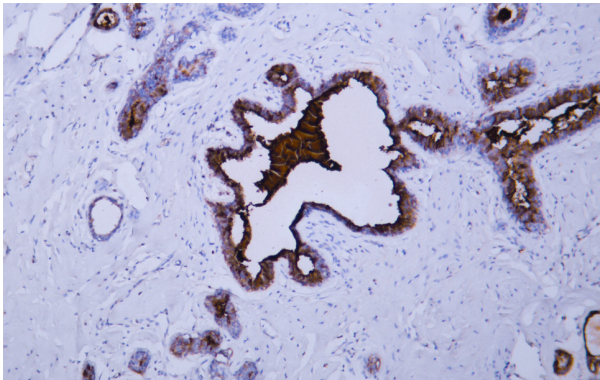
matters needing attention

Avoid repeated freezing and thawing!

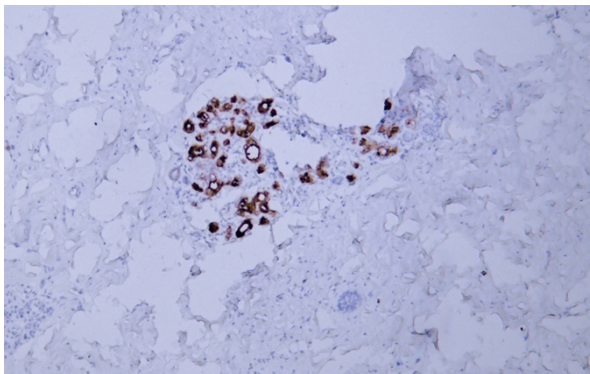
Usage suggestions

This product can be used in immunological reaction related experiments. For more information, please consult technical personnel.

Products Images



Human breast carcinoma tissue was stained with Anti-GCDFP-15 (ABT330) Antibody



Human breast tissue was stained with Anti-GCDFP-15 (ABT330) Antibody