



Glycophorin A mouse mAb(ABT179)

Catalog No	BYab-15591
Isotype	IgG
Reactivity	Human
Applications	IHC;IF
Gene Name	GYPA GPA
Protein Name	Glycophorin A
Immunogen	Synthesized peptide derived from human Glycophorin A
Specificity	The antibody can specifically recognize human Glycophorin A protein.
Formulation	Liquid in PBS containing 50% glycerol, 0.5% BSA and 0.34% sodium azide.
Source	Mouse, Monoclonal/IgG1, Kappa
Purification	The antibody was affinity-purified from mouse ascites by affinity-chromatography using specific immunogen.
Dilution	IHC-p 1:100-500, IF 1:100-500
Concentration	1 mg/ml
Purity	≥90%
Storage Stability	-20°C/1 year
Synonyms	Glycophorin-A (MN sialoglycoprotein;PAS-2;Sialoglycoprotein alpha;CD antigen CD235a)
Observed Band	
Cell Pathway	Cell membrane ; Single-pass type I membrane protein . Appears to be colocalized with SLC4A1.
Tissue Specificity	Cytoplasmic
Function	function:Glycophorin A is the major intrinsic membrane protein of the erythrocyte. The N-terminal glycosylated segment, which lies outside the erythrocyte membrane, has MN blood group receptors and also binds influenza virus.,online information:Blood group antigen gene mutation database,polymorphism:Along with GYPB, GYPA is responsible for the MNS blood group system.,similarity:Belongs to the glycophorin A family.,
Background	Glycophorins A (GYPA) and B (GYPB) are major sialoglycoproteins of the human erythrocyte membrane which bear the antigenic determinants for the MN and Ss blood groups. In addition to the M or N and S or s antigens that commonly occur in all populations, about 40 related variant phenotypes have been identified.

Nanjing BYabs science technology Co.,Ltd



These variants include all the variants of the Miltenberger complex and several isoforms of Sta, as well as Dantu, Sat, He, Mg, and deletion variants Ena, S-s-U- and Mk. Most of the variants are the result of gene recombinations between GYPA and GYPB. [provided by RefSeq, Jul 2008],

matters needing attention

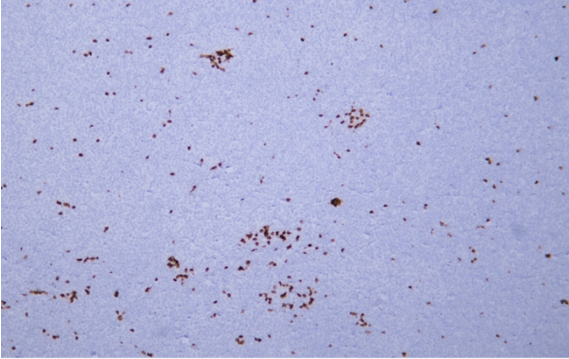
Avoid repeated freezing and thawing!

Usage suggestions

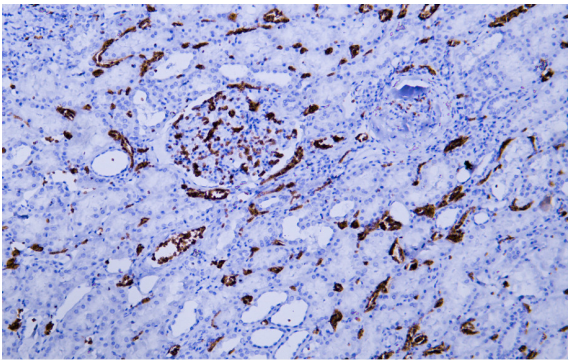
This product can be used in immunological reaction related experiments. For more information, please consult technical personnel.



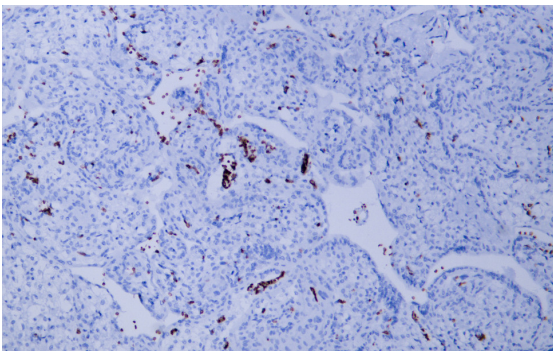
Products Images



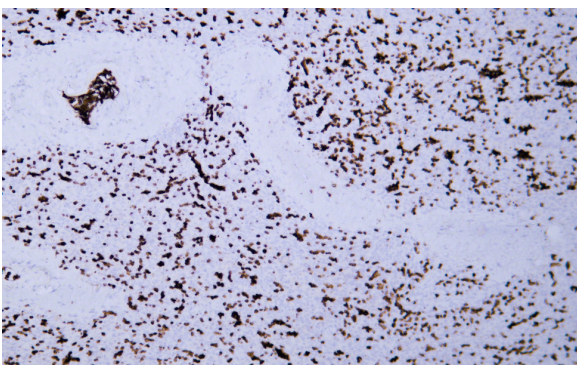
Human acute myeloid leukemia tissue was stained with Anti-Glycophorin A (ABT179) Antibody



Human kidney tissue was stained with Anti-Glycophorin A (ABT179) Antibody



Human placenta tissue was stained with Anti-Glycophorin A (ABT179) Antibody



Human spleen tissue was stained with Anti-Glycophorin A (ABT179) Antibody