



# Prostatic Acid Phosphatase(PSAP) rabbit mAb(ABT66R)

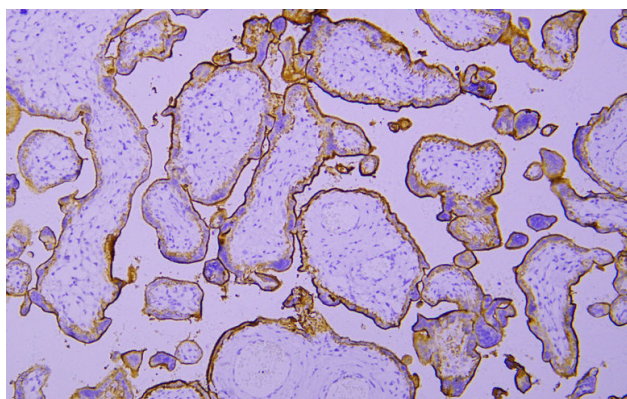
<b>Catalog No</b>	BYab-15498
<b>Isotype</b>	IgG
<b>Reactivity</b>	Human
<b>Applications</b>	IHC;IF
<b>Gene Name</b>	ACPP
<b>Protein Name</b>	Prostatic Acid Phosphatase(PSAP)
<b>Immunogen</b>	Synthesized peptide derived from human Prostatic Acid Phosphatase(PSAP)
<b>Specificity</b>	This antibody detects endogenous levels of Prostatic Acid Phosphatase(PSAP) at Human
<b>Formulation</b>	Liquid in PBS containing 50% glycerol, 0.5% BSA and 0.02% sodium azide.
<b>Source</b>	Polyclonal, Rabbit,IgG
<b>Purification</b>	The antibody was affinity-purified from Cell supernatant by affinity-chromatography using specific immunogen.
<b>Dilution</b>	IHC-p 1:200. IF 1:50-200
<b>Concentration</b>	1 mg/ml
<b>Purity</b>	≥90%
<b>Storage Stability</b>	-20°C/1 year
<b>Synonyms</b>	Prostatic acid phosphatase (PAP;EC 3.1.3.2;5'-nucleotidase;5'-NT;EC 3.1.3.5;Ecto-5'-nucleotidase;Thiamine monophosphatase;TMPase) [Cleaved into: PAPf39]
<b>Observed Band</b>	
<b>Cell Pathway</b>	[Isoform 1]: Secreted .; [Isoform 2]: Cell membrane ; Single-pass type I membrane protein . Lysosome membrane ; Single-pass type I membrane protein . Nucleus . Cytoplasm, cytosol . Appears to shuttle between the cell membrane and intracellular vesicles. Colocalizes with FLOT1 at cell membrane and in intracellular vesicles (PubMed:17638863). Colocalizes with LAMP2 on the lysosome membrane (PubMed:17897319). .
<b>Tissue Specificity</b>	Highly expressed in the prostate, restricted to glandular and ductal epithelial cells. Also expressed in bladder, kidney, pancreas, lung, cervix, testis and ovary. Weak expression in a subset of pancreatic islet cells, squamous epithelia, the pilosebaceous unit, colonic neuroendocrine cells and skin adnexal structures. Low expression in prostate carcinoma cells and tissues. ; [Isoform 2]: Widely expressed. Expressed in the sarcolemma of skeletal muscle.

**Nanjing BYabs science technology Co.,Ltd**



<b>Function</b>	catalytic activity:A phosphate monoester + H(2)O = an alcohol + phosphate.,similarity:Belongs to the histidine acid phosphatase family.,subcellular location:Predominantly localized in the plasma membrane but also detected in intracellular vesicles.,subunit:Homodimer.,
<b>Background</b>	
<b>matters needing attention</b>	Avoid repeated freezing and thawing!
<b>Usage suggestions</b>	This product can be used in immunological reaction related experiments. For more information, please consult technical personnel.

## Products Images



Immunohistochemical analysis of paraffin-embedded human Placenta. 1, Antibody was incubated at 4° overnight. 2, TRIS-EDTA of pH8.0 was used for antigen retrieval. 3,Secondary antibody was diluted at 1:200(room temperature, 30min).