



# Myelin Basic Protein(MBP) (ABT-MBP) mouse mAb

<b>Catalog No</b>	BYab-15363
<b>Isotype</b>	IgG
<b>Reactivity</b>	Human;Mouse;Rat
<b>Applications</b>	IHC;WB;IF
<b>Gene Name</b>	MBP
<b>Protein Name</b>	Myelin basic protein (MBP) (Myelin A1 protein) (Myelin membrane encephalitogenic protein)
<b>Immunogen</b>	Synthesized peptide derived from human Myelin Basic Protein(MBP)
<b>Specificity</b>	This antibody detects endogenous levels of human Myelin Basic Protein(MBP). Heat-induced epitope retrieval (HIER) TRIS-EDTA of pH8.0 was highly recommended as antigen repair method in paraffin section
<b>Formulation</b>	Liquid in PBS containing 50% glycerol, 0.5% BSA and 0.02% sodium azide.
<b>Source</b>	Mouse, Monoclonal/IgG1, Kappa
<b>Purification</b>	The antibody was affinity-purified from mouse ascites by affinity-chromatography using specific immunogen.
<b>Dilution</b>	IHC-p 1:100-500, WB 1:200-1000. IF 1:50-200
<b>Concentration</b>	1 mg/ml
<b>Purity</b>	≥90%
<b>Storage Stability</b>	-20°C/1 year
<b>Synonyms</b>	
<b>Observed Band</b>	
<b>Cell Pathway</b>	Myelin membrane; Peripheral membrane protein; Cytoplasmic side. Cytoplasmic side of myelin.; [Isoform 3]: Nucleus . Targeted to nucleus in oligodendrocytes.
<b>Tissue Specificity</b>	MBP isoforms are found in both the central and the peripheral nervous system, whereas Golli-MBP isoforms are expressed in fetal thymus, spleen and spinal cord, as well as in cell lines derived from the immune system.
<b>Function</b>	alternative products:Additional isoforms seem to exist,developmental stage:Expression begins abruptly in 14-16 week old fetuses. Even smaller isoforms seem to be produced during embryogenesis; some of these persisting in the adult. Expression of isoform MBP2 is more evident at 16 weeks and its relative proportion declines thereafter.,disease:The reduction in the surface charge of citrullinated and/or methylated MBP could result in a weakened attachment to the myelin membrane. This mechanism could be operative in demyelinating diseases such as chronic multiple sclerosis (MS), and fulminating MS (Marburg disease).,function:The classic group of MBP isoforms (isoform 4-isoform 14) are

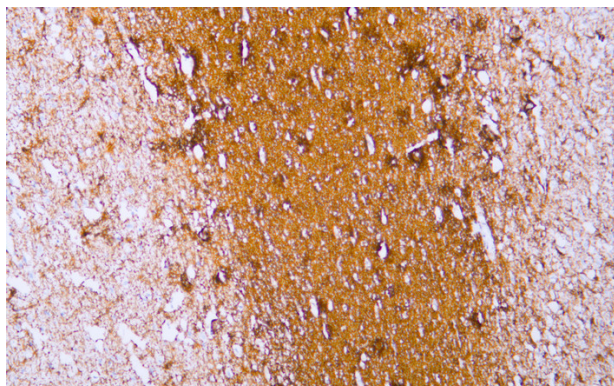
**Nanjing BYabscience technology Co.,Ltd**



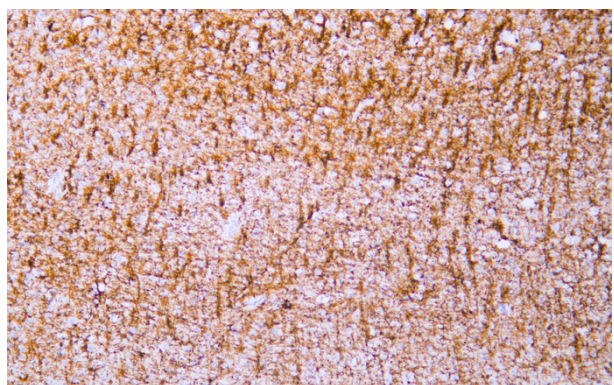
	with PLP the most abundant protein components of the myelin membrane in the CNS. They have a role in both its formation and stabilization. The smaller isoforms might have an important role in remyelination of
Background	The protein encoded by the classic MBP gene is a major constituent of the myelin sheath of oligodendrocytes and Schwann cells in the nervous system. However, MBP-related transcripts are also present in the bone marrow and the immune system. These mRNAs arise from the long MBP gene (otherwise called "Golli-MBP") that contains 3 additional exons located upstream of the classic MBP exons. Alternative splicing from the Golli and the MBP transcription start sites gives rise to 2 sets of MBP-related transcripts and gene products. The Golli mRNAs contain 3 exons unique to Golli-MBP, spliced in-frame to 1 or more MBP exons. They encode hybrid proteins that have N-terminal Golli aa sequence linked to MBP aa sequence. The second family of transcripts contain only MBP exons and produce the well characterized myelin basic proteins. This complex gene structure is conserved among species suggesting that
matters needing attention	Avoid repeated freezing and thawing!
Usage suggestions	This product can be used in immunological reaction related experiments. For more information, please consult technical personnel.



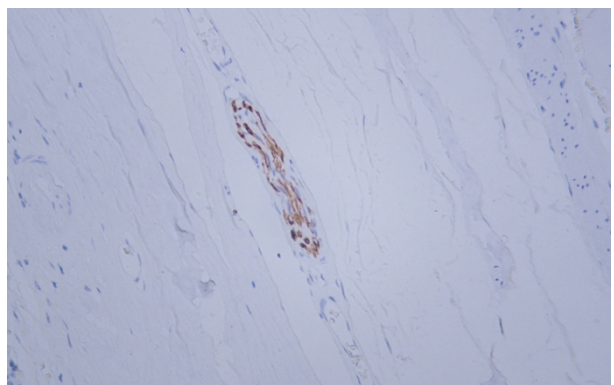
## Products Images



Human cerebrum tissue was stained with Anti-Myelin Basic Protein(MBP) (ABT-MBP) Antibody



Human cerebrum tissue was stained with Anti-Myelin Basic Protein(MBP) (ABT-MBP) Antibody



Human tonsil tissue was stained with Anti-Myelin Basic Protein(MBP) (ABT-MBP) Antibody