



# Cytokeratin 7 (ABT-CK7) mouse mAb

<b>Catalog No</b>	BYab-15258
<b>Isotype</b>	IgG
<b>Reactivity</b>	Human
<b>Applications</b>	IHC, WB
<b>Gene Name</b>	KRT7 SCL
<b>Protein Name</b>	Keratin, type II cytoskeletal 7 (Cytokeratin-7) (CK-7) (Keratin-7) (K7) (Sarcolelectin) (Type-II keratin Kb7)
<b>Immunogen</b>	Synthesized peptide derived from human Cytokeratin 7
<b>Specificity</b>	This antibody detects endogenous levels of human Cytokeratin 7. Heat-induced epitope retrieval (HIER) TRIS-EDTA of pH8.0 was highly recommended as antigen repair method in paraffin section
<b>Formulation</b>	Liquid in PBS containing 50% glycerol, 0.5% BSA and 0.02% sodium azide.
<b>Source</b>	Mouse, Monoclonal/IgG2b, Kappa
<b>Purification</b>	The antibody was affinity-purified from mouse ascites by affinity-chromatography using specific immunogen.
<b>Dilution</b>	IHC-p 1:300-500, WB 1:500-2000
<b>Concentration</b>	1 mg/ml
<b>Purity</b>	≥90%
<b>Storage Stability</b>	-20°C/1 year
<b>Synonyms</b>	
<b>Observed Band</b>	
<b>Cell Pathway</b>	Cytoplasm .
<b>Tissue Specificity</b>	Expressed in cultured epidermal, bronchial and mesothelial cells but absent in colon, ectocervix and liver. Observed throughout the glandular cells in the junction between stomach and esophagus but is absent in the esophagus.
<b>Function</b>	function:Blocks interferon-dependent interphase and stimulates DNA synthesis in cells. Involved in the translational regulation of the human papillomavirus type 16 E7 mRNA (HPV16 E7).,induction:Up-regulated by retinoic acid.,mass spectrometry: PubMed:11840567,miscellaneous:There are two types of cytoskeletal and microfibrillar keratin: I (acidic; 40-55 kDa) and II (neutral to basic; 56-70 kDa).,PTM:Arg-20 is dimethylated, probably to asymmetric dimethylarginine.,similarity:Belongs to the intermediate filament family.,subunit:Heterotetramer of two type I and two type II keratins. Interacts with eukaryotic translation initiator factor 3 (eIF3) subunit EIF3S10 and with HPV16

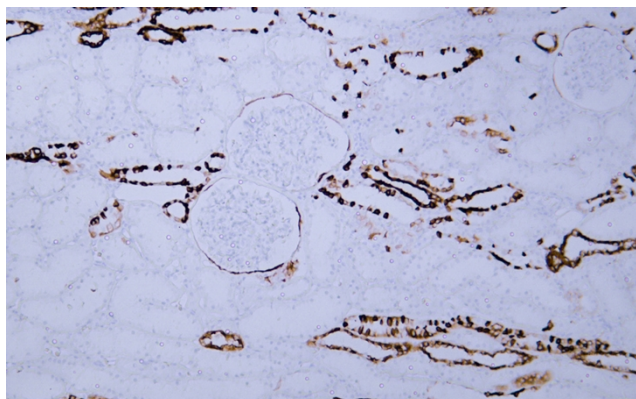
**Nanjing BYabscience technology Co.,Ltd**



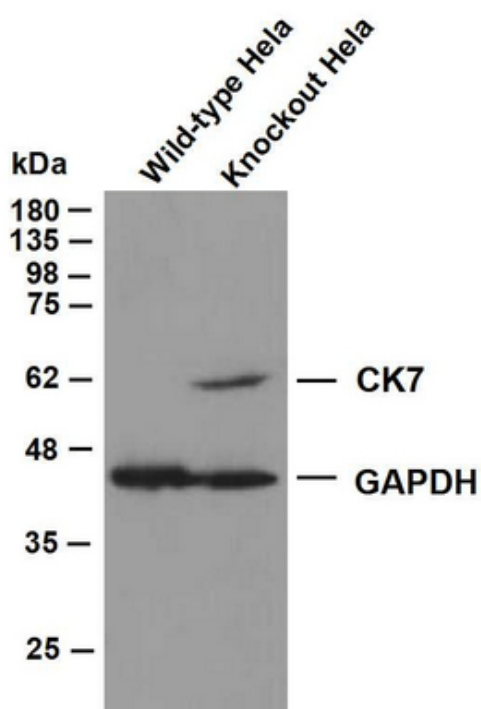
	E7.,tissue specificity:Expressed in cultured epidermal, bronchial and mesothelial cells but absent in colon, ectocervix and liver. Observed throughout the glandular cells in the junction between stomach and esophagus bu
Background	keratin 7(KRT7) Homo sapiens The protein encoded by this gene is a member of the keratin gene family. The type II cytokeratins consist of basic or neutral proteins which are arranged in pairs of heterotypic keratin chains coexpressed during differentiation of simple and stratified epithelial tissues. This type II cytokeratin is specifically expressed in the simple epithelia lining the cavities of the internal organs and in the gland ducts and blood vessels. The genes encoding the type II cytokeratins are clustered in a region of chromosome 12q12-q13. Alternative splicing may result in several transcript variants; however, not all variants have been fully described. [provided by RefSeq, Jul 2008],
matters needing attention	Avoid repeated freezing and thawing!
Usage suggestions	This product can be used in immunological reaction related experiments. For more information, please consult technical personnel.



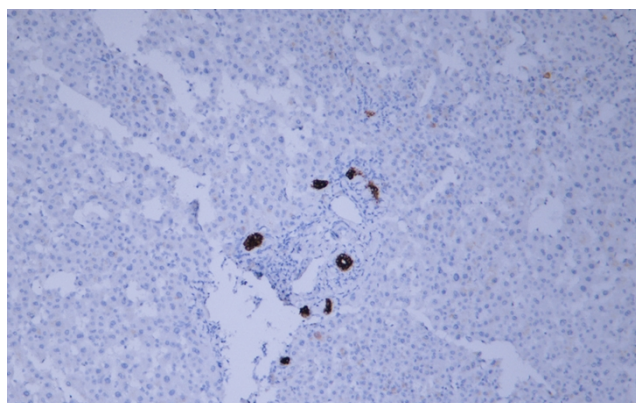
## Products Images



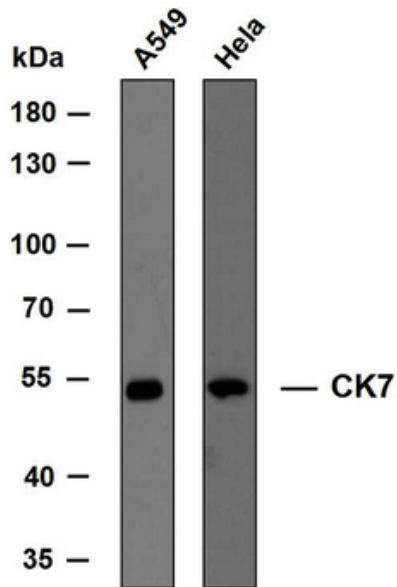
Human kidney tissue was stained with Anti-Cytokeratin 7 (ABT-CK7) Antibody



Various whole cell lysates were separated by 10% SDS-PAGE, and the membrane was blotted with anti-CK7 and anti-GAPDH antibody. The HRP-conjugated anti-Mouse IgG antibody was used to detect the antibody. Lane 1 : CK7 knockout HeLa cell lysate Lane 2 : Wide type HeLa cell lysate Predicted band size: 51 kDa Observed band size:: 51 kDa



Human liver tissue was stained with Anti-Cytokeratin 7 (ABT-CK7) Antibody



Various whole cell lysates were separated by 8% SDS-PAGE, and the membrane was blotted with anti-CK7 antibody. The HRP-conjugated anti-Mouse IgG antibody was used to detect the antibody. Predicted band size: 51 kDa