



CD43 (ABT-CD43) mouse mAb

Catalog No	BYab-15244
Isotype	IgG
Reactivity	Human
Applications	IHC;WB;IF
Gene Name	SPN CD43
Protein Name	Leukosialin (Galactoglycoprotein) (GALGP) (Leukocyte sialoglycoprotein) (Sialophorin) (CD antigen CD43)
Immunogen	Synthesized peptide derived from human CD43
Specificity	This antibody detects endogenous levels of human CD43. Heat-induced epitope retrieval (HIER) Citrate buffer of pH6.0 was highly recommended as antigen repair method in paraffin section
Formulation	Liquid in PBS containing 50% glycerol, 0.5% BSA and 0.02% sodium azide.
Source	Mouse, Monoclonal/IgG1, Kappa
Purification	The antibody was affinity-purified from mouse ascites by affinity-chromatography using specific immunogen.
Dilution	IHC-p 1:100-500, WB 1:200-1000. IF 1:50-200
Concentration	1 mg/ml
Purity	≥90%
Storage Stability	-20°C/1 year
Synonyms	
Observed Band	
Cell Pathway	Membrane ; Single-pass type I membrane protein . Cell projection, microvillus . Cell projection, uropodium . Localizes to the uropodium and microvilli via its interaction with ERM proteins (EZR, RDX and MSN). . ; [CD43 cytoplasmic tail]: Nucleus . Nucleus, PML body . The sumoylated form localizes to the PML body. .
Tissue Specificity	Cell surface of thymocytes, T-lymphocytes, neutrophils, plasma cells and myelomas.
Function	disease:CD43 expression is defective on the T-cells of males with the immunodeficiency Wiskott-Aldrich syndrome. Affected males are susceptible to opportunistic infections and do not respond to polysaccharide antigens, reflecting defects in cytotoxic and helper T-cell functions.,function:One of the major glycoproteins of thymocytes and T lymphocytes. Plays a role in the physicochemical properties of the T-cell surface and in lectin binding. Presents carbohydrate ligands to selectins. Has an extended rodlike structure that could protrude above the glycocalyx of the cell and allow multiple glycan chains to be

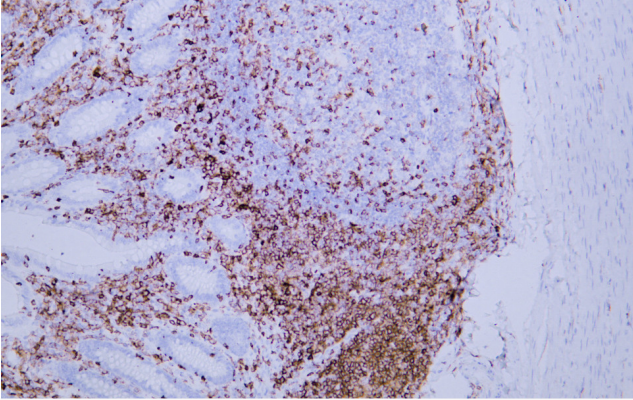
Nanjing BYabscience technology Co.,Ltd



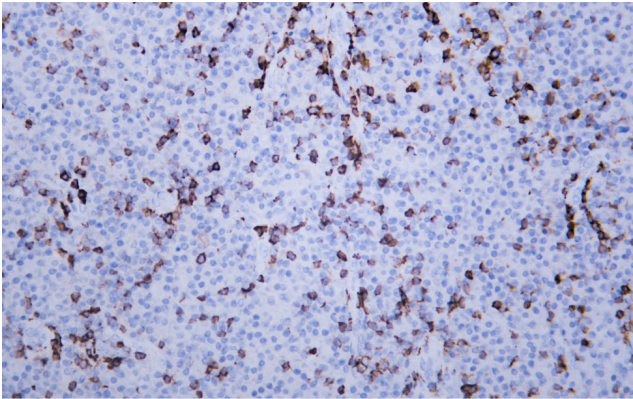
	accessible for binding. Is a counter receptor for SN/Siglec-1 (By similarity). During T-cell activation is actively removed from the T-cell-APC (antigen-presenting cell) contact site thus suggesting a negative regulatory role in adaptive immune response.,PTM:Glycosylated; has a high c
Background	The protein encoded by this gene is a major sialoglycoprotein found on the surface of thymocytes, T lymphocytes, monocytes, granulocytes, and some B lymphocytes. It may be part of a physiologic ligand-receptor complex involved in T-cell activation. During T-cell activation, this protein is actively removed from the T-cell-APC (antigen-presenting cell) contact site, suggesting a negative regulatory role in adaptive immune response. [provided by RefSeq, Sep 2011],
matters needing attention	Avoid repeated freezing and thawing!
Usage suggestions	This product can be used in immunological reaction related experiments. For more information, please consult technical personnel.



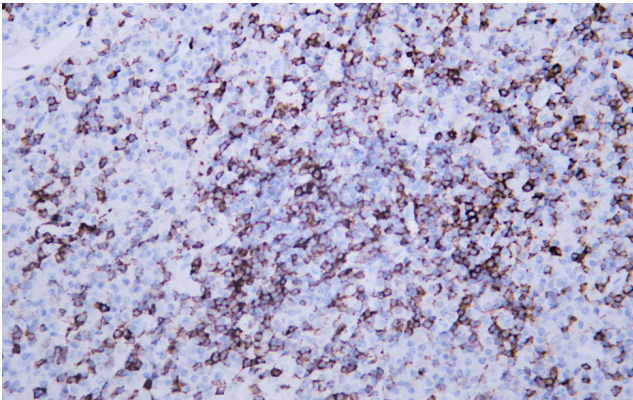
Products Images



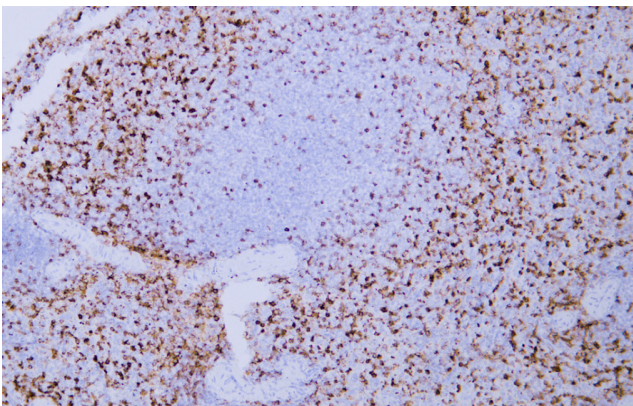
Human appendix tissue was stained with Anti-CD43 (ABT-CD43) Antibody



Human lymphoma tissue was stained with Anti-CD43 (ABT-CD43) Antibody



Human lymphoma tissue was stained with Anti-CD43 (ABT-CD43) Antibody



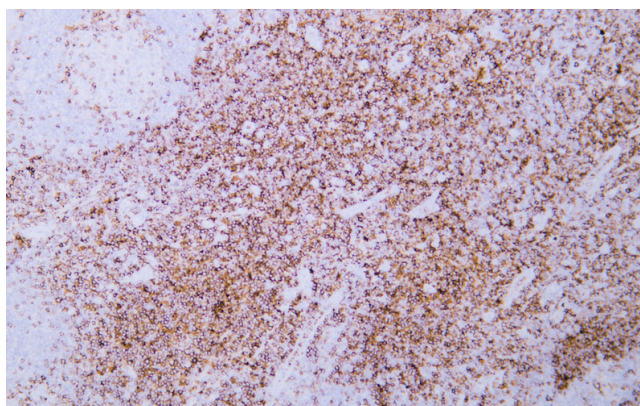
Human spleen tissue was stained with Anti-CD43 (ABT-CD43) Antibody

Nanjing BYabscience technology Co.,Ltd

网址: www.njbybio.com

官方热线: 025-5229-8998

监督电话: 15950492658



Human tonsil tissue was stained with Anti-CD43
(ABT-CD43) Antibody