



## CD61 (PT0052) mouse mAb

Catalog No	BYab-15222
Isotype	IgG
Reactivity	Human;Mouse;Rat
Applications	IHC;WB;IF
Gene Name	ITGB3 GP3A
Protein Name	Integrin beta-3 (Platelet membrane glycoprotein IIIa) (GPIIIa) (CD antigen CD61)
Immunogen	Synthesized peptide derived from human CD61
Specificity	This antibody detects endogenous levels of human CD61. Heat-induced epitope retrieval (HIER) Citrate buffer of pH6.0 was highly recommended as antigen repair method in paraffin section
Formulation	Liquid in PBS containing 50% glycerol, 0.5% BSA and 0.02% sodium azide.
Source	Mouse, Monoclonal/IgG1, Kappa
Purification	The antibody was affinity-purified from mouse ascites by affinity-chromatography using specific immunogen.
Dilution	IHC-p 1:100-500, WB 1:200-1000. IF 1:50-200
Concentration	1 mg/ml
Purity	≥90%
Storage Stability	-20°C/1 year
Synonyms	
Observed Band	
Cell Pathway	Cell membrane ; Single-pass type I membrane protein . Cell projection, lamellipodium membrane . Cell junction, focal adhesion . Cell junction, synapse, postsynaptic cell membrane ; Single-pass type I membrane protein . Cell junction, synapse .
Tissue Specificity	Isoform beta-3A and isoform beta-3C are widely expressed. Isoform beta-3A is specifically expressed in osteoblast cells; isoform beta-3C is specifically expressed in prostate and testis.
Function	disease:Defects in ITGB3 are a cause of Glanzmann thrombasthenia (GT) [MIM:273800]; also known as thrombasthenia of Glanzmann and Naegeli. GT is the most common inherited disease of platelets. Its inheritance is autosomal recessive. It is characterized by mucocutaneous bleeding of mild-to-moderate severity and the inability of this integrin to recognize macromolecular or synthetic peptide ligands. GT has been classified clinically into types I and II. In type I, platelets show absence of the glycoprotein IIb-IIIa complexes at their surface and

Nanjing BYabscience technology Co.,Ltd



lack fibrinogen and clot retraction capability. In type II, the platelets express the GPIIb-IIIa complex at reduced levels (5-20% controls), have detectable amounts of fibrinogen, and have low or moderate clot retraction capability. The platelets of GT variants have normal or near normal (60-100%) expression of dysfunctional receptors.,function:Int

**Background**

The ITGB3 protein product is the integrin beta chain beta 3. Integrins are integral cell-surface proteins composed of an alpha chain and a beta chain. A given chain may combine with multiple partners resulting in different integrins. Integrin beta 3 is found along with the alpha IIb chain in platelets. Integrins are known to participate in cell adhesion as well as cell-surface mediated signalling. [provided by RefSeq, Jul 2008],

**matters needing attention**

Avoid repeated freezing and thawing!

**Usage suggestions**

This product can be used in immunological reaction related experiments. For more information, please consult technical personnel.

Nanjing BYabscience technology Co.,Ltd

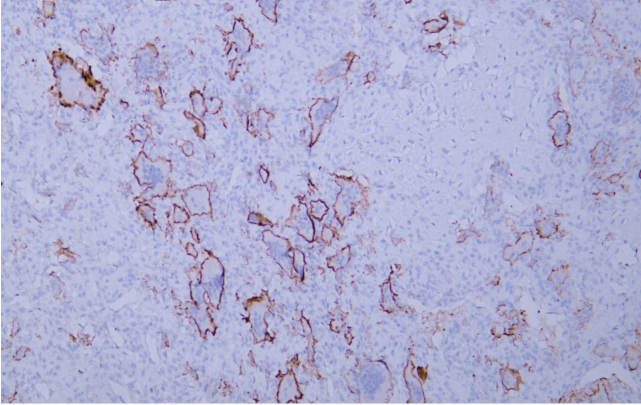
网址: [www.njbybio.com](http://www.njbybio.com)

官方热线: 025-5229-8998

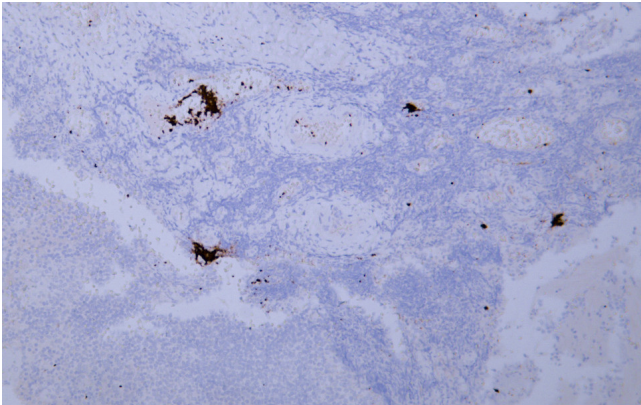
监督电话: 15950492658



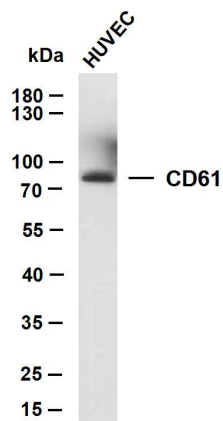
## Products Images



Human giant cell tumor tissue was stained with Anti-CD61 (ABT032) Antibody



Human tonsil tissue was stained with Anti-CD61 (ABT032) Antibody



Whole cell lysates were separated by 10% SDS-PAGE, and the membrane was blotted with anti-CD61 (ABT032)antibody. The HRP-conjugated Goat anti-Mouse IgG(H + L) antibody was used to detect the antibody. Lane 1: HUVEC Predicted band size: 70kDa Observed band size: 70kDa