



hCG (ABT-HCG) mouse mAb

Catalog No	BYab-15170
Isotype	IgG
Reactivity	Human; Predict react with Mouse, Rat
Applications	IHC, WB
Gene Name	CGA
Protein Name	Glycoprotein hormones alpha chain (Anterior pituitary glycoprotein hormones common subunit alpha) (Choriogonadotropin alpha chain) (Chorionic gonadotrophin subunit alpha) (CG-alpha) (Follicle-stimulat
Immunogen	Synthesized peptide derived from human hCG
Specificity	This antibody detects endogenous levels of human hCG. Heat-induced epitope retrieval (HIER) TRIS-EDTA of pH8.0 was highly recommended as antigen repair method in paraffin section
Formulation	Liquid in PBS containing 50% glycerol, 0.5% BSA and 0.02% sodium azide.
Source	Mouse, Monoclonal/IgG2a, Kappa
Purification	The antibody was affinity-purified from mouse ascites by affinity-chromatography using specific immunogen.
Dilution	IHC-p 1:100-500, WB 1:200-1000
Concentration	1 mg/ml
Purity	≥90%
Storage Stability	-20°C/1 year
Synonyms	
Observed Band	
Cell Pathway	Secreted .
Tissue Specificity	Pituitary, Placenta,
Function	online information: Proteic grace - Issue 77 of December 2006, similarity: Belongs to the glycoprotein hormones subunit alpha family., subunit: Heterodimer of a common alpha chain and a unique beta chain which confers biological specificity to thyrotropin, lutropin, follitropin and gonadotropin.,
Background	The four human glycoprotein hormones chorionic gonadotropin (CG), luteinizing hormone (LH), follicle stimulating hormone (FSH), and thyroid stimulating hormone (TSH) are dimers consisting of alpha and beta subunits that are associated noncovalently. The alpha subunits of these hormones are identical, however, their beta chains are unique and confer biological specificity. The protein

Nanjing BYabscience technology Co., Ltd



encoded by this gene is the alpha subunit and belongs to the glycoprotein hormones alpha chain family. Two transcript variants encoding different isoforms have been found for this gene. [provided by RefSeq, Nov 2011],

matters needing attention

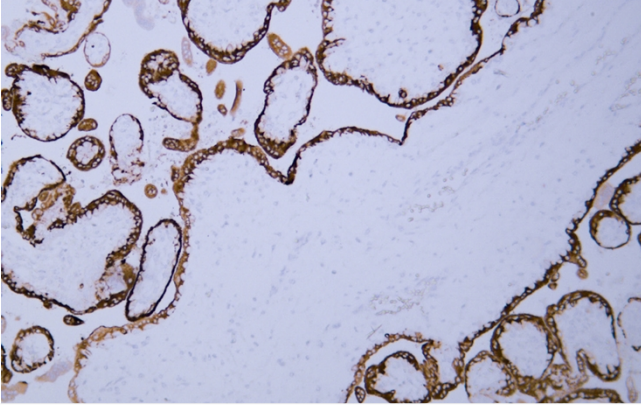
Avoid repeated freezing and thawing!

Usage suggestions

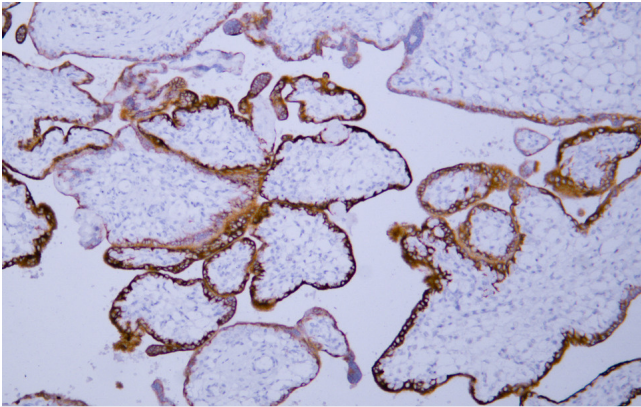
This product can be used in immunological reaction related experiments. For more information, please consult technical personnel.



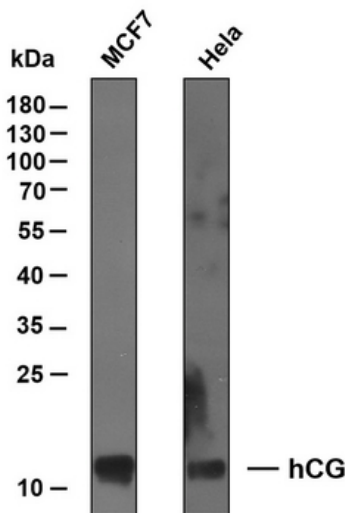
Products Images



Human placenta tissue was stained with Anti-hCG α (ABT-HCG) Antibody



Human placenta tissue was stained with Anti-hCG α (ABT-HCG) Antibody



Various whole cell lysates were separated by 12% SDS-PAGE, and the membrane was blotted with anti-hCG antibody. The HRP-conjugated anti-Mouse IgG antibody was used to detect the antibody. Predicted band size: 13(17) kDa Observed band size: 13 kDa