



CD2 (ABT529) Mouse mAb

Catalog No	BYab-15127
Isotype	IgG
Reactivity	Human
Applications	IHC;WB;
Gene Name	CD2 SRBC
Protein Name	CD 2;CD2;CD2 antigen (p50), sheep red blood cell receptor;CD2 antigen;CD2 molecule;CD2_HUMAN;Erythrocyte receptor;FLJ46032;LFA-2;LFA-3 receptor;LFA2;LFA3 receptor;Ly-37;Lymphocyte function antigen 2;l
Immunogen	Synthesized peptide derived from human CD2
Specificity	The antibody can specifically recognize human CD2 protein.
Formulation	PBS, pH7.2, 0.03% Porcolin 300, containing stabilizing protein
Source	Monoclonal Mouse IgG2b, Kappa
Purification	The antibody was affinity-purified from mouse ascites by affinity-chromatography using specific immunogen.
Dilution	IHC-p 1:200-400, WB 1:200-1000,
Concentration	1 mg/ml
Purity	≥90%
Storage Stability	-20°C/1 year
Synonyms	CD 2;CD2;CD2 antigen (p50), sheep red blood cell receptor;CD2 antigen;CD2 molecule;CD2_HUMAN;Erythrocyte receptor;FLJ46032;LFA-2;LFA-3 receptor;LFA2;LFA3 receptor;Ly-37;Lymphocyte function antigen 2;lymphocyte-function antigen-2;OTTHUMP00000024366;Rosette receptor;Sheep erythrocyte receptor;SRBC;T cell surface antigen CD2;T-cell surface antigen CD2;T-cell surface antigen T11/Leu-5;T-lymphocyte surface CD2 antigen;T11
Observed Band	
Cell Pathway	Membranous
Tissue Specificity	Tonsil
Function	function:CD2 interacts with lymphocyte function-associated antigen (LFA-3) and CD48/BCM1 to mediate adhesion between T-cells and other cell types. CD2 is implicated in the triggering of T-cells, the cytoplasmic domain is implicated in the

Nanjing BYabs science technology Co.,Ltd



signaling function.,online information:CD2 entry,similarity:Contains 1 Ig-like C2-type (immunoglobulin-like) domain.,similarity:Contains 1 Ig-like V-type (immunoglobulin-like) domain.,subunit:Interacts with CD2AP (By similarity). Interacts with PSTPIP1.,

Background

The protein encoded by this gene is a surface antigen found on all peripheral blood T-cells. The encoded protein interacts with LFA3 (CD58) on antigen presenting cells to optimize immune recognition. A locus control region (LCR) has been found in the 3' flanking sequence of this gene. [provided by RefSeq, Jun 2016],

matters needing attention

Avoid repeated freezing and thawing!

Usage suggestions

This product can be used in immunological reaction related experiments. For more information, please consult technical personnel.

Nanjing BYabscience technology Co.,Ltd

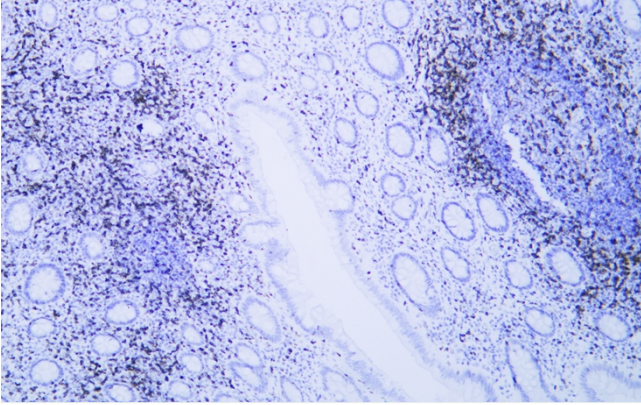
网址: www.njbybio.com

官方热线: 025-5229-8998

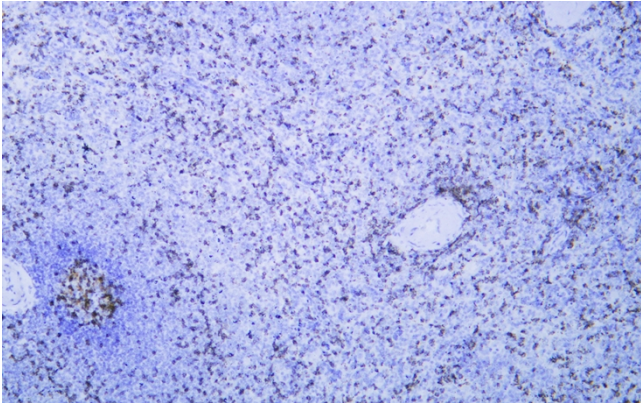
监督电话: 15950492658



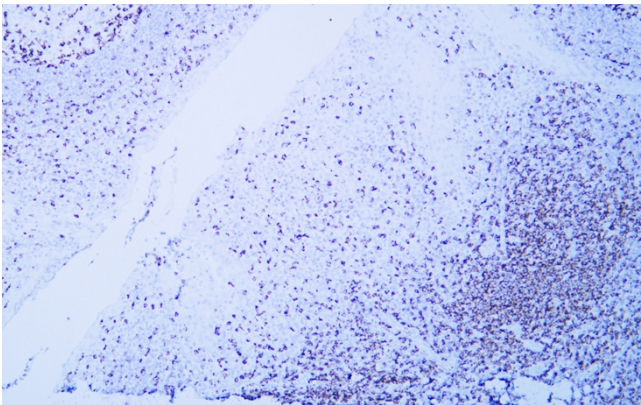
Products Images



Human appendix tissue was stained with anti-CD2(ABT529) antibody. Secondary Antibody was Goat anti Rabbit/Mouse polymer HRP, Ready to Use(RS0011) at 37° 45min.



Human spleen tissue was stained with anti-CD2(ABT529) antibody. Secondary Antibody was Goat anti Rabbit/Mouse polymer HRP, Ready to Use(RS0011) at 37° 45min.



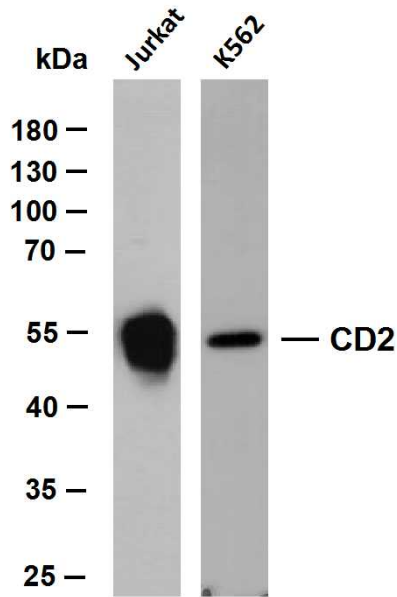
Human tonsil tissue was stained with anti-CD2(ABT529) antibody. Secondary Antibody was Goat anti Rabbit/Mouse polymer HRP, Ready to Use(RS0011) at 37° 45min.

Nanjing BYabscience technology Co.,Ltd

网址: www.njbybio.com

官方热线: 025-5229-8998

监督电话: 15950492658



Whole cell lysates were separated by 10% SDS-PAGE, and the membrane was blotted with anti-CD2(ABT529)antibody. The HRP-conjugated Goat anti-Mouse IgG(H + L) antibody was used to detect the antibody. Lane 1: Jurkat Lane 2: K562
Predicted band size: 39kDa Observed band size: 50kDa