



Adrenocorticotropin(ACTH) (ABT-ACTH) mouse mAb

Catalog No	BYab-15107
Isotype	IgG
Reactivity	Human; Predict react with Mouse, Rat
Applications	IHC;IF
Gene Name	POMC
Protein Name	Pro-opiomelanocortin (POMC) (Corticotropin-lipotropin) [Cleaved into: NPP; Melanotropin gamma (Gamma-MSH); Potential peptide; Corticotropin (Adrenocorticotrophic hormone) (ACTH); Melanotropin alpha (AI
Immunogen	Synthesized peptide derived from human Adrenocorticotropin(ACTH)
Specificity	This antibody detects endogenous levels of human Adrenocorticotropin(ACTH). Heat-induced epitope retrieval (HIER) TRIS-EDTA of pH8.0 was highly recommended as antigen repair method in paraffin section
Formulation	Liquid in PBS containing 50% glycerol, 0.5% BSA and 0.02% sodium azide.
Source	Mouse, Monoclonal/IgG1, Kappa
Purification	The antibody was affinity-purified from mouse ascites by affinity-chromatography using specific immunogen.
Dilution	WB 500-2000 IHC-p 1:100-500. IF 1:50-200
Concentration	1 mg/ml
Purity	≥90%
Storage Stability	-20°C/1 year
Synonyms	
Observed Band	
Cell Pathway	Secreted . Melanocyte-stimulating hormone alpha and beta-endorphin are stored in separate granules in hypothalamic POMC neurons, suggesting that secretion may be under the control of different regulatory mechanisms. .
Tissue Specificity	ACTH and MSH are produced by the pituitary gland.
Function	disease:Defects in POMC are the cause of pro-opiomelanocortinin deficiency [MIM:609734]. Affected individuals present early-onset obesity, adrenal insufficiency and red hair.,disease:Defects in POMC may be associated with susceptibility to obesity [MIM:601665].,function:ACTH stimulates the adrenal glands to release cortisol.,function:Beta-endorphin and Met-enkephalin are endogenous opiates.,function:MSH (melanocyte-stimulating hormone) increases the pigmentation of skin by increasing melanin production in melanocytes.,online information:Melanocyte-stimulating hormone entry,PTM:O-glycosylated; reducing

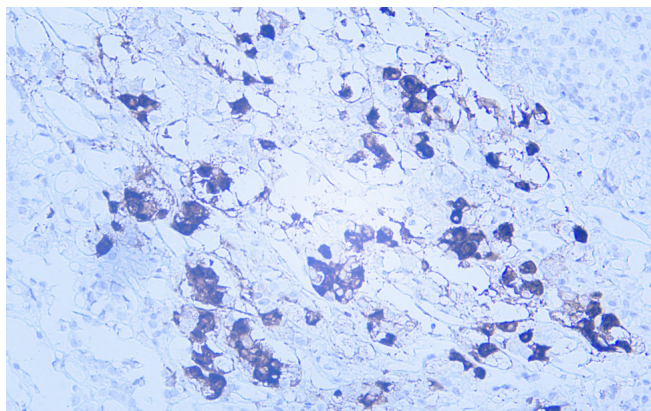
Nanjing BYabscience technology Co.,Ltd



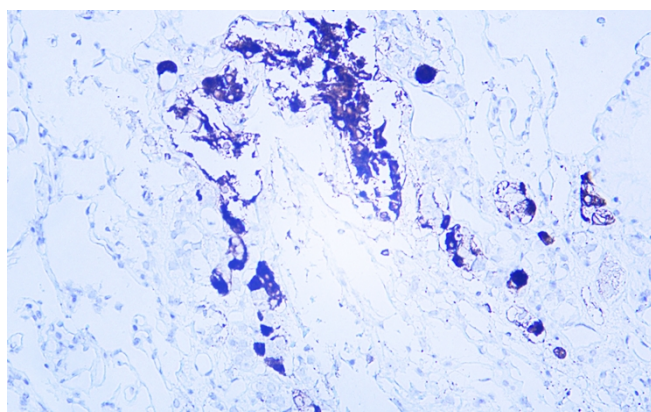
	sugar is probably N-acetylgalactosamine.,PTM:Specific enzymatic cleavages at paired basic residues yield the different active peptides.,similarity:Belongs to the POMC family.,tissue specificity:ACTH and MSH are produced by the pituitary gland.,
Background	This gene encodes a preproprotein that undergoes extensive, tissue-specific, post-translational processing via cleavage by subtilisin-like enzymes known as prohormone convertases. There are eight potential cleavage sites within the preproprotein and, depending on tissue type and the available convertases, processing may yield as many as ten biologically active peptides involved in diverse cellular functions. The encoded protein is synthesized mainly in corticotroph cells of the anterior pituitary where four cleavage sites are used; adrenocorticotrophin, essential for normal steroidogenesis and the maintenance of normal adrenal weight, and lipotropin beta are the major end products. In other tissues, including the hypothalamus, placenta, and epithelium, all cleavage sites may be used, giving rise to peptides with roles in pain and energy homeostasis, melanocyte stimulation, and immune modulation. The
matters needing attention	Avoid repeated freezing and thawing!
Usage suggestions	This product can be used in immunological reaction related experiments. For more information, please consult technical personnel.



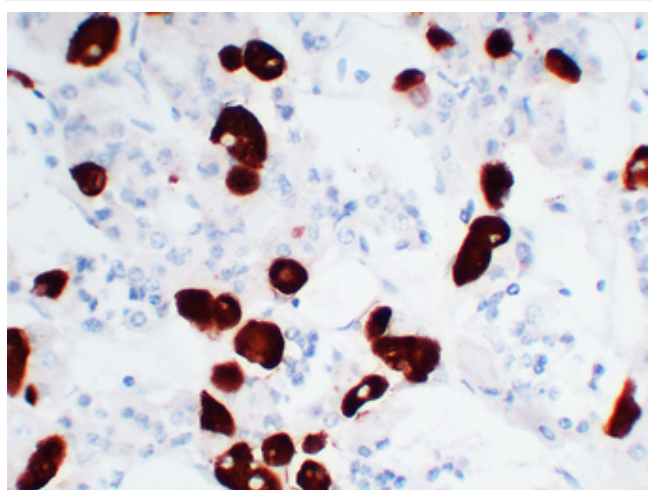
Products Images



Human pituitary adenoma tissue was stained with anti-ACTH(ABT-ACTH) antibody. Secondary Antibody was Goat anti Rabbit/Mouse polymer HRP, Ready to Use(RS0011) at 37° 45min.



Human pituitary adenoma tissue was stained with anti-ACTH(ABT-ACTH) antibody. Secondary Antibody was Goat anti Rabbit/Mouse polymer HRP, Ready to Use(RS0011) at 37° 45min.



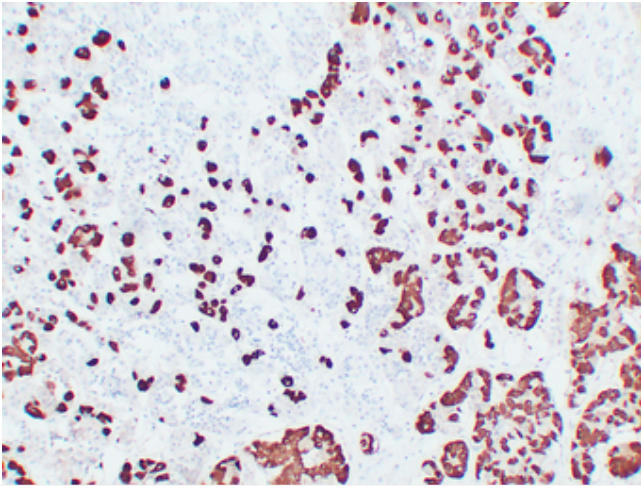
Human pituitary adenoma tissue was stained with anti-ACTH(ABT-ACTH) antibody. Secondary Antibody was Goat anti Rabbit/Mouse polymer HRP, Ready to Use(RS0011) at 37° 45min.

Nanjing BYabscience technology Co.,Ltd

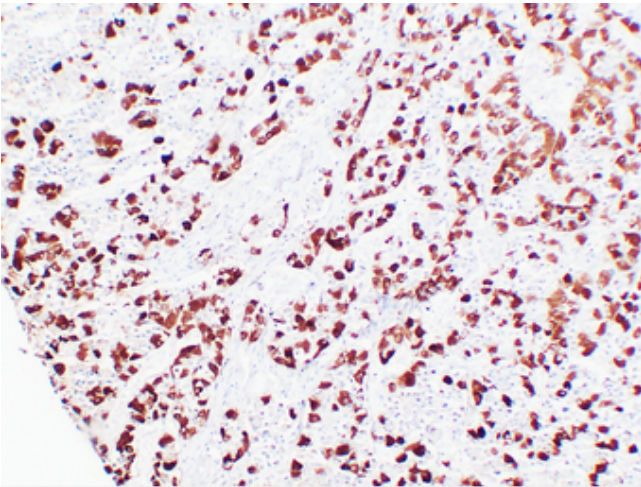
网址: www.njbybio.com

官方热线: 025-5229-8998

监督电话: 15950492658



Human pituitary adenoma tissue was stained with anti-ACTH(ABT-ACTH) antibody. Secondary Antibody was Goat anti Rabbit/Mouse polymer HRP, Ready to Use(RS0011) at 37° 45min.



Human pituitary tissue was stained with anti-ACTH(ABT-ACTH) antibody. Secondary Antibody was Goat anti Rabbit/Mouse polymer HRP, Ready to Use(RS0011) at 37° 45min.