



## p16 INK mouse mAb(PTR2301)

Catalog No	BYab-15102
Isotype	IgG
Reactivity	Human;Mouse,Rat
Applications	WB
Gene Name	CDKN2A CDKN2 MTS1
Protein Name	p16 INK
Immunogen	Synthesized peptide derived from human p16 INK
Specificity	This antibody detects endogenous levels of p16 INK at Human
Formulation	Liquid in PBS containing 50% glycerol, 0.5% BSA and 0.139% sodium azide.
Source	Mouse, Monoclonal/IgG2b, Kappa
Purification	The antibody was affinity-purified from mouse ascites by affinity-chromatography using specific immunogen.
Dilution	WB 1:500-2000 IHC 1:50-200
Concentration	1 mg/ml
Purity	≥90%
Storage Stability	-20°C/1 year
Synonyms	Cyclin-dependent kinase inhibitor 2A, isoforms 1/2/3 (Cyclin-dependent kinase 4 inhibitor A) (CDK4I) (Multiple tumor suppressor 1) (MTS-1) (p16-INK4a) (p16-INK4) (p16INK4A)
Observed Band	
Cell Pathway	Cytoplasm . Nucleus .
Tissue Specificity	Widely expressed but not detected in brain or skeletal muscle. Isoform 3 is pancreas-specific.
Function	alternative products:Isoform 1 and isoform 4 arise due to the use of two alternative first exons joined to a common exon 2 at the same acceptor site but in different reading frames, resulting in two completely different isoforms,disease:Defects in CDKN2A are a cause of Li-Fraumeni syndrome (LFS) [MIM:151623]. LFS is a highly penetrant familial cancer phenotype usually associated with inherited mutations in TP53.,disease:Defects in CDKN2A are involved in tumor formation in a wide range of tissues.,disease:Defects in CDKN2A are the cause of cutaneous malignant melanoma 2 (CMM2) [MIM:155601]. Inheritance is autosomal dominant. Malignant melanoma is a

Nanjing BYabscience technology Co.,Ltd



malignant neoplasm of melanocytes, arising de novo or from a preexisting benign nevus, which occurs most often in the skin but also may involve other sites.,disease:Defects in CDKN2A are the cause of familial atypical multiple mole melanoma-pan

#### Background

ERROR 42

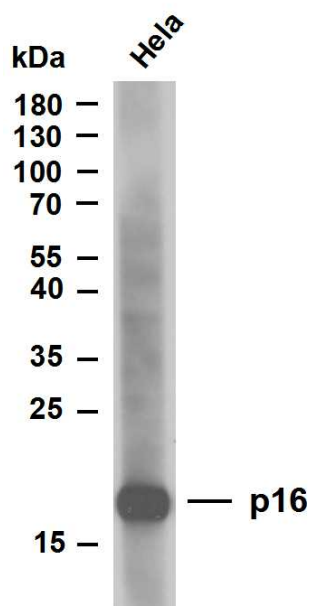
#### matters needing attention

Avoid repeated freezing and thawing!

#### Usage suggestions

This product can be used in immunological reaction related experiments. For more information, please consult technical personnel.

## Products Images



Whole cell lysates of HeLa were separated by 12% SDS-PAGE, and the membrane was blotted with anti-p16 antibody. The HRP-conjugated Goat anti-Rabbit IgG(H + L) antibody was used to detect the antibody. Lane 1: HeLa Predicted band size: 16kDa Observed band size: 16kDa

Nanjing BYabscience technology Co.,Ltd

网址: [www.njbybio.com](http://www.njbybio.com)

官方热线: 025-5229-8998

监督电话: 15950492658