



ADCK2 Polyclonal Antibody

Catalog No	BYab-14644
Isotype	IgG
Reactivity	Human;Rat;Mouse;
Applications	WB;IHC;IF;ELISA
Gene Name	ADCK2
Protein Name	Uncharacterized aarF domain-containing protein kinase 2
Immunogen	The antiserum was produced against synthesized peptide derived from human ADCK2. AA range:241-290
Specificity	ADCK2 Polyclonal Antibody detects endogenous levels of ADCK2 protein.
Formulation	Liquid in PBS containing 50% glycerol, 0.5% BSA and 0.02% sodium azide.
Source	Polyclonal, Rabbit,IgG
Purification	The antibody was affinity-purified from rabbit antiserum by affinity-chromatography using epitope-specific immunogen.
Dilution	Western Blot: 1/500 - 1/2000. Immunohistochemistry: 1/100 - 1/300. Immunofluorescence: 1/200 - 1/1000. ELISA: 1/10000. Not yet tested in other applications.
Concentration	1 mg/ml
Purity	≥90%
Storage Stability	-20°C/1 year
Synonyms	ADCK2; AARF; Uncharacterized aarF domain-containing protein kinase 2
Observed Band	69kD
Cell Pathway	Membrane ; Single-pass membrane protein .
Tissue Specificity	Muscle,
Function	function:The function of this protein is not yet clear. It is not known if it has protein kinase activity and what type of substrate it would phosphorylate (Ser, Thr or Tyr).,sequence caution:Aberrant splicing.,similarity:Belongs to the protein kinase superfamily. ADCK protein kinase family.,similarity:Contains 1 protein kinase domain.,
Background	function:The function of this protein is not yet clear. It is not known if it has protein kinase activity and what type of substrate it would phosphorylate (Ser, Thr or Tyr).,sequence caution:Aberrant splicing.,similarity:Belongs to the protein kinase superfamily. ADCK protein kinase family.,similarity:Contains 1 protein kinase

Nanjing BYabscience technology Co.,Ltd



domain.,

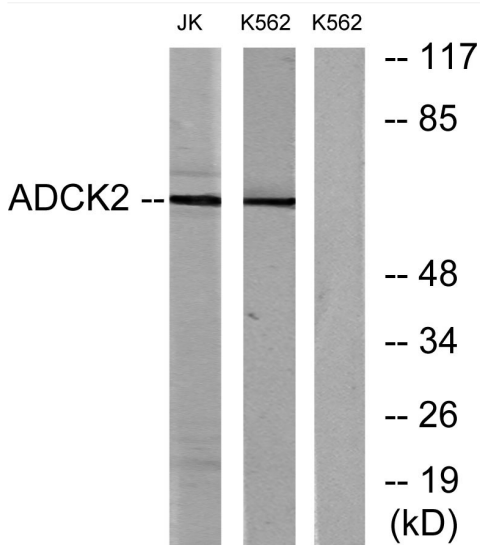
matters needing attention

Avoid repeated freezing and thawing!

Usage suggestions

This product can be used in immunological reaction related experiments. For more information, please consult technical personnel.

Products Images



Western blot analysis of lysates from Jurkat and K562 cells, using ADCK2 Antibody. The lane on the right is blocked with the synthesized peptide.