



# Pragmin (phospho Tyr413) Polyclonal Antibody

<b>Catalog No</b>	BYab-14347
<b>Isotype</b>	IgG
<b>Reactivity</b>	Human;Mouse;Rat
<b>Applications</b>	WB;IHC;IF;ELISA
<b>Gene Name</b>	SGK223
<b>Protein Name</b>	Tyrosine-protein kinase SgK223
<b>Immunogen</b>	Synthesized phospho-peptide around the phosphorylation site of human Pragmin (phospho Tyr413)
<b>Specificity</b>	Phospho-Pragmin (Y413) Polyclonal Antibody detects endogenous levels of Pragmin protein only when phosphorylated at Y413.
<b>Formulation</b>	Liquid in PBS containing 50% glycerol, 0.5% BSA and 0.02% sodium azide.
<b>Source</b>	Polyclonal, Rabbit,IgG
<b>Purification</b>	The antibody was affinity-purified from rabbit antiserum by affinity-chromatography using epitope-specific immunogen.
<b>Dilution</b>	WB: 1/500 - 1/2000. IHC: 1/100 - 1/300. ELISA: 1/10000.. IF 1:50-200
<b>Concentration</b>	1 mg/ml
<b>Purity</b>	≥90%
<b>Storage Stability</b>	-20°C/1 year
<b>Synonyms</b>	SGK223; Tyrosine-protein kinase SgK223; Sugen kinase 223
<b>Observed Band</b>	175kD
<b>Cell Pathway</b>	Cytoplasm . Cell junction, focal adhesion . Nucleus . Colocalized with NOTCH1 in the nucleus. .
<b>Tissue Specificity</b>	Amygdala,Epithelium,Fetal brain,Spleen,
<b>Function</b>	catalytic activity:ATP + a [protein]-L-tyrosine = ADP + a [protein]-L-tyrosine phosphate.,similarity:Belongs to the protein kinase superfamily.,similarity:Contains 1 protein kinase domain.,
<b>Background</b>	This gene encodes an enzyme that belongs to the tyrosine protein kinase family. A similar protein in rat binds to Rho family GTPase 2 (Rnd2) and regulates neurite outgrowth via activation of Ras homolog gene family, member A (RhoA). [provided by RefSeq, Mar 2014],
<b>matters needing attention</b>	Avoid repeated freezing and thawing!

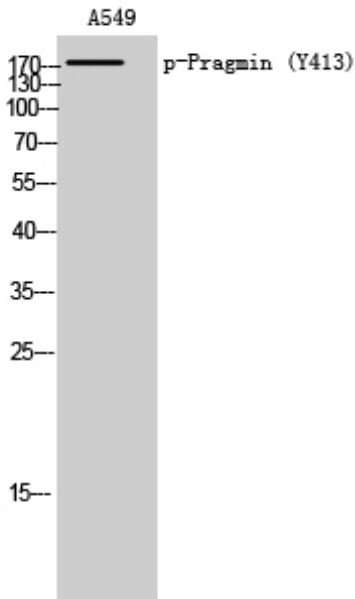
Nanjing BYabscience technology Co.,Ltd



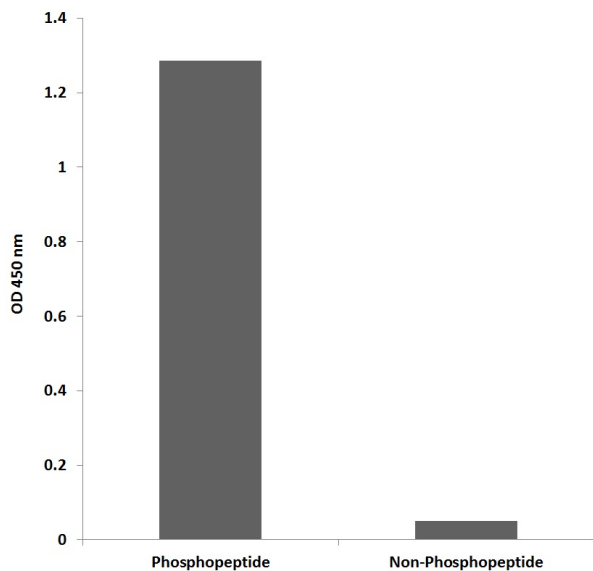
### Usage suggestions

This product can be used in immunological reaction related experiments. For more information, please consult technical personnel.

## Products Images

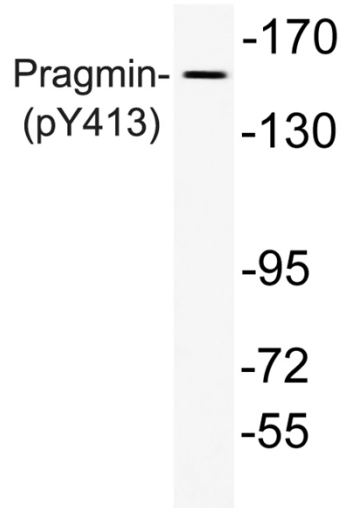


Western Blot analysis of A549 cells using Phospho-Pragmin (Y413) Polyclonal Antibody

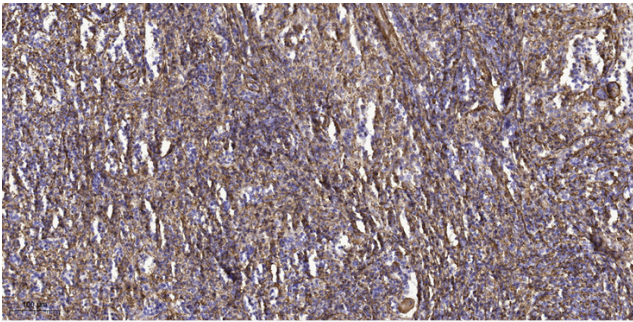


Enzyme-Linked Immunosorbent Assay (Phospho-ELISA) for Immunogen Phosphopeptide (Phospho-left) and Non-Phosphopeptide (Phospho-right), using Pragmin (Phospho-Tyr413) Antibody

Nanjing BYabscience technology Co.,Ltd



Western blot analysis of lysate from A549 cells, using phospho-Pragmin (Phospho-Tyr413) antibody.



Immunohistochemical analysis of paraffin-embedded human spleen tissue. 1, primary Antibody was diluted at 1:200(4<sup>o</sup> overnight). 2, Sodium citrate pH 6.0 was used for antigen retrieval(>98<sup>o</sup>C,20min). 3, Secondary antibody was diluted at 1:200