



CKMT1 mouse mAb

Catalog No	BYab-14226
Isotype	IgG
Reactivity	Human;Mouse
Applications	WB
Gene Name	ckmt1b
Protein Name	
Immunogen	Purified recombinant human CKMT1 protein fragments expressed in E.coli.
Specificity	This antibody detects endogenous levels of CKMT1 and does not cross-react with related proteins.
Formulation	Liquid in PBS containing 50% glycerol, 0.5% BSA and 0.02% sodium azide.
Source	Monoclonal, Mouse
Purification	The antibody was affinity-purified from mouse ascites by affinity-chromatography using epitope-specific immunogen.
Dilution	wb 1:1000
Concentration	1 mg/ml
Purity	≥90%
Storage Stability	-20°C/1 year
Synonyms	Acidic type mitochondrial creatine kinase;CKMT;CKMT1;CKMT1A;CKMT1B;Creatine kinase mitochondrial 1 ubiquitous;Creatine kinase U type, mitochondrial;Creatine kinase ubiquitous mitochondrial;Creatine kinase, mitochondrial 1 (ubiquitous);Creatine kinase, mitochondrial 1A;Creatine kinase, mitochondrial 1B;Mia CK; U MtCK;Ubiquitous mitochondrial creatine kinase;UMTCK.
Observed Band	47kD
Cell Pathway	Mitochondrion inner membrane; Peripheral membrane protein; Intermembrane side.
Tissue Specificity	Cerebellum,Lung,PNS,
Function	catalytic activity:ATP + creatine = ADP + phosphocreatine.,function:Reversibly catalyzes the transfer of phosphate between ATP and various phosphogens (e.g. creatine phosphate). Creatine kinase isoenzymes play a central role in energy transduction in tissues with large, fluctuating energy demands, such as skeletal muscle, heart, brain and spermatozoa.,miscellaneous:Mitochondrial creatine

Nanjing BYabscience technology Co.,Ltd



kinase binds cardiolipin.,similarity:Belongs to the ATP:guanido phosphotransferase family.,subunit:Exists as an octamer composed of four MTCK homodimers.,

Background

Mitochondrial creatine (MtCK) kinase is responsible for the transfer of high energy phosphate from mitochondria to the cytosolic carrier, creatine. It belongs to the creatine kinase isoenzyme family. It exists as two isoenzymes, sarcomeric MtCK and ubiquitous MtCK, encoded by separate genes. Mitochondrial creatine kinase occurs in two different oligomeric forms: dimers and octamers, in contrast to the exclusively dimeric cytosolic creatine kinase isoenzymes. Many malignant cancers with poor prognosis have shown overexpression of ubiquitous mitochondrial creatine kinase; this may be related to high energy turnover and failure to eliminate cancer cells via apoptosis. Ubiquitous mitochondrial creatine kinase has 80% homology with the coding exons of sarcomeric mitochondrial creatine kinase. Two genes located near each other on chromosome 15 have been identified which encode identical mi

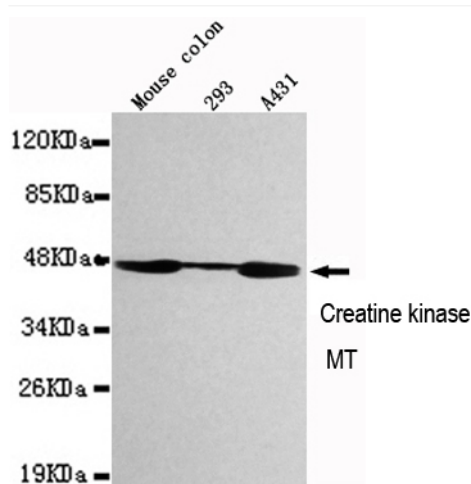
matters needing attention

Avoid repeated freezing and thawing!

Usage suggestions

This product can be used in immunological reaction related experiments. For more information, please consult technical personnel.

Products Images



Western blot detection of CKMT1 in Mouse Colon,293 and A431 cell lysates using CKMT1 mouse mAb (1:1000 diluted).Predicted band size:47KDa.Observed band size:47KDa.

Nanjing BYabs science technology Co.,Ltd

网址: www.njbybio.com

官方热线: 025-5229-8998

监督电话: 15950492658